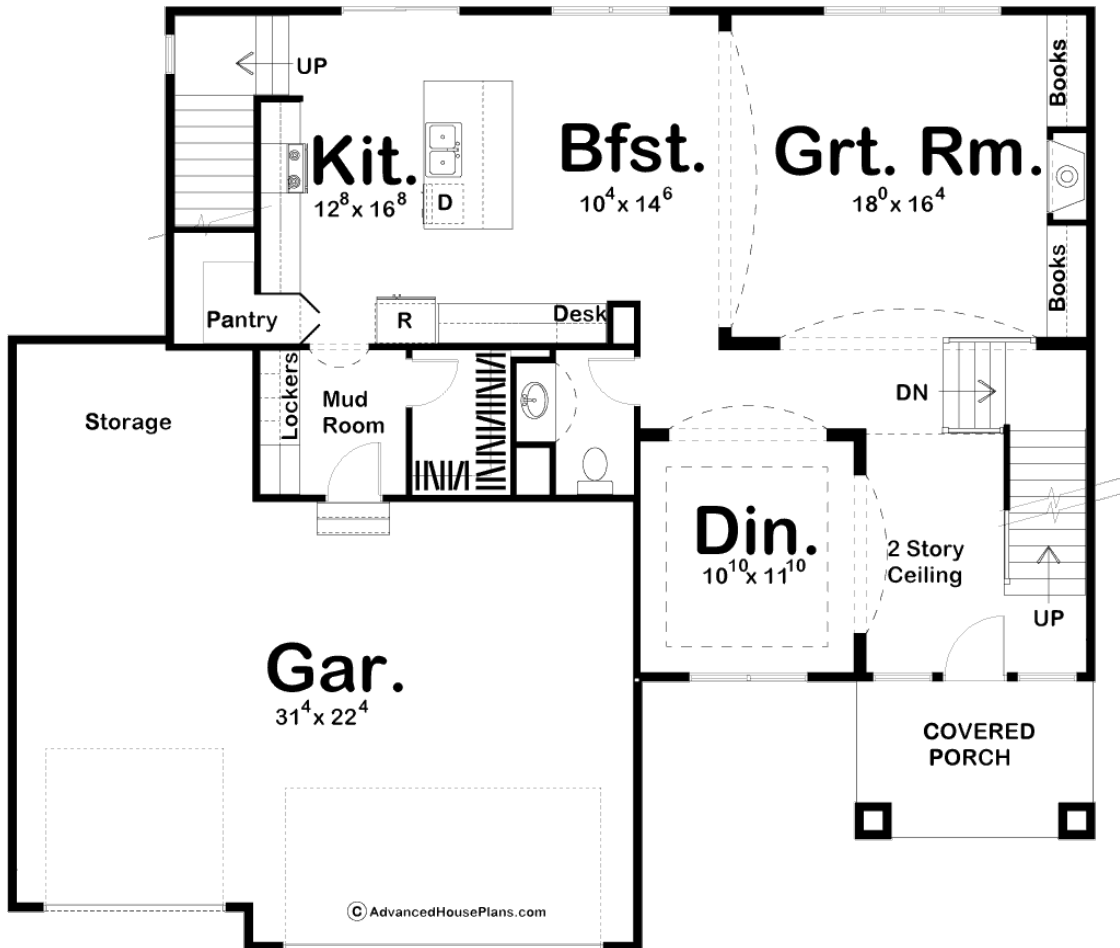
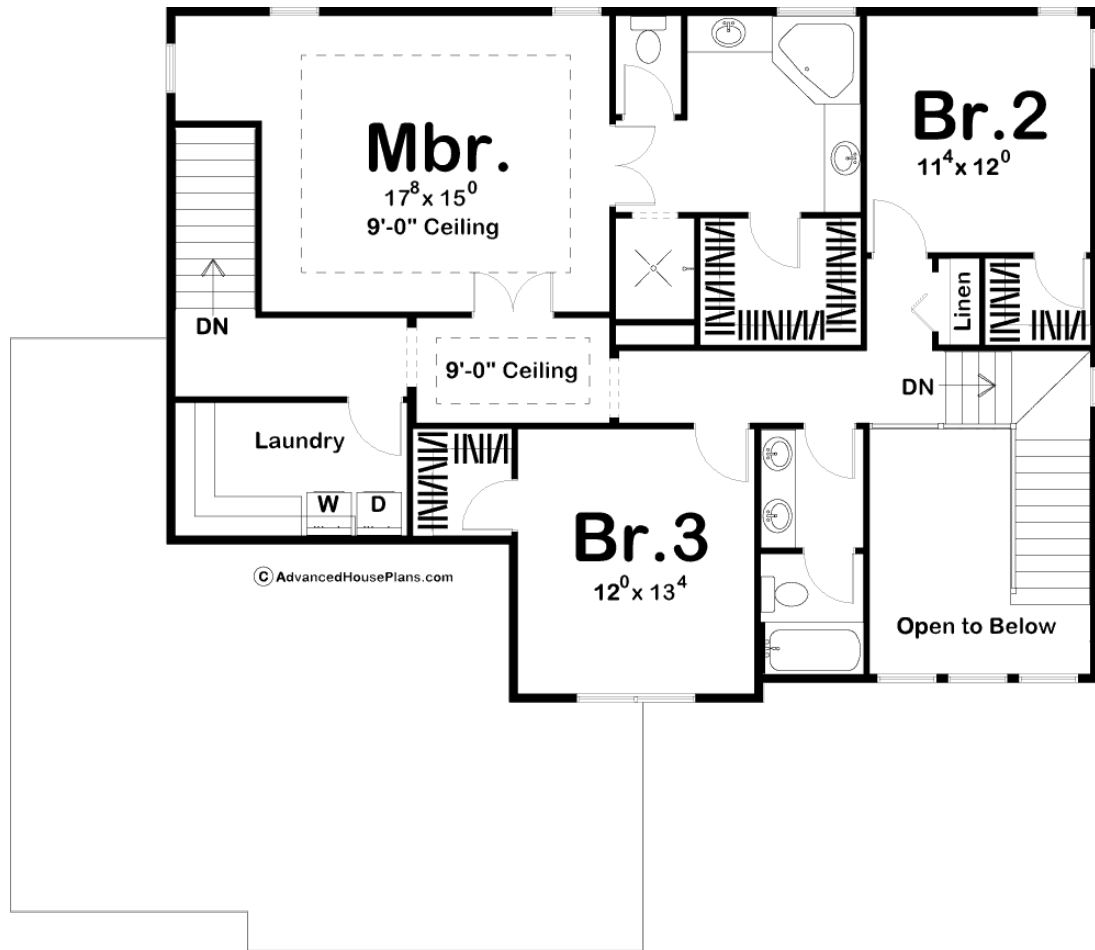




**29046 - Alison Data Sheet**

2633 SQ FT	3 BEDS	3 BATHS	3 BAYS	55' 0" WIDE	48' 0" DEEP
---------------	-----------	------------	-----------	----------------	----------------





## Construction Specs

### Layout

Bedrooms	3
Bathrooms	3
Garage Bays	3

### Square Footage

Main Level	1354 Sq. Ft.
Second Level	1279 Sq. Ft.
Garage	805 Sq. Ft.
Total Finished Area	2633 Sq. Ft.

### Exterior Dimensions

Width	55' 0"
Depth	48' 0"
Ridge Height	28' 0"
<i>Calculated from main floor line</i>	

## Default Construction Stats

*Stats are unique to the individual plan.*

Foundation Type	Basement
Exterior Wall Construction	2x4
Roof Pitches	Primary 4/12, Secondary 6/12
Foundation Wall Height	9'
Main Wall Height	9'
Second Wall Height	8'

## Plan Description

Clean lines and shallow angles speak the unmistakable language of Mediterranean styling on this family-sized, 2-story house plan. Tall columns highlight the covered front porch. Upon entering the home, guests are greeted by a two-story-high entry hall with views into the formal dining room. A few steps farther inside reveal a spacious great room with a fireplace flanked by built-in bookcases. Adjacent to the great room, the breakfast area lies open to the kitchen with its breakfast island, walk-in pantry and built-in desk. Just off the kitchen, a mudroom with walk-in closet and built-in lockers accesses the three-car garage. The garage features a storage area that could opt as space for a workshop. A secondary rear stairway leads from the kitchen area to the second level. Upstairs, the master bedroom features a cozy, but naturally lit sitting area -- perfect for reading. The master bath offers pampering features that include his and her vanities, a corner tub, walk-in closet and compartmented toilet. Bedrooms 2 and 3 have walk-in closets and share a centrally located hall bath. A second-level laundry conveniently serves all bedrooms with plenty of counter space for folding clothes.