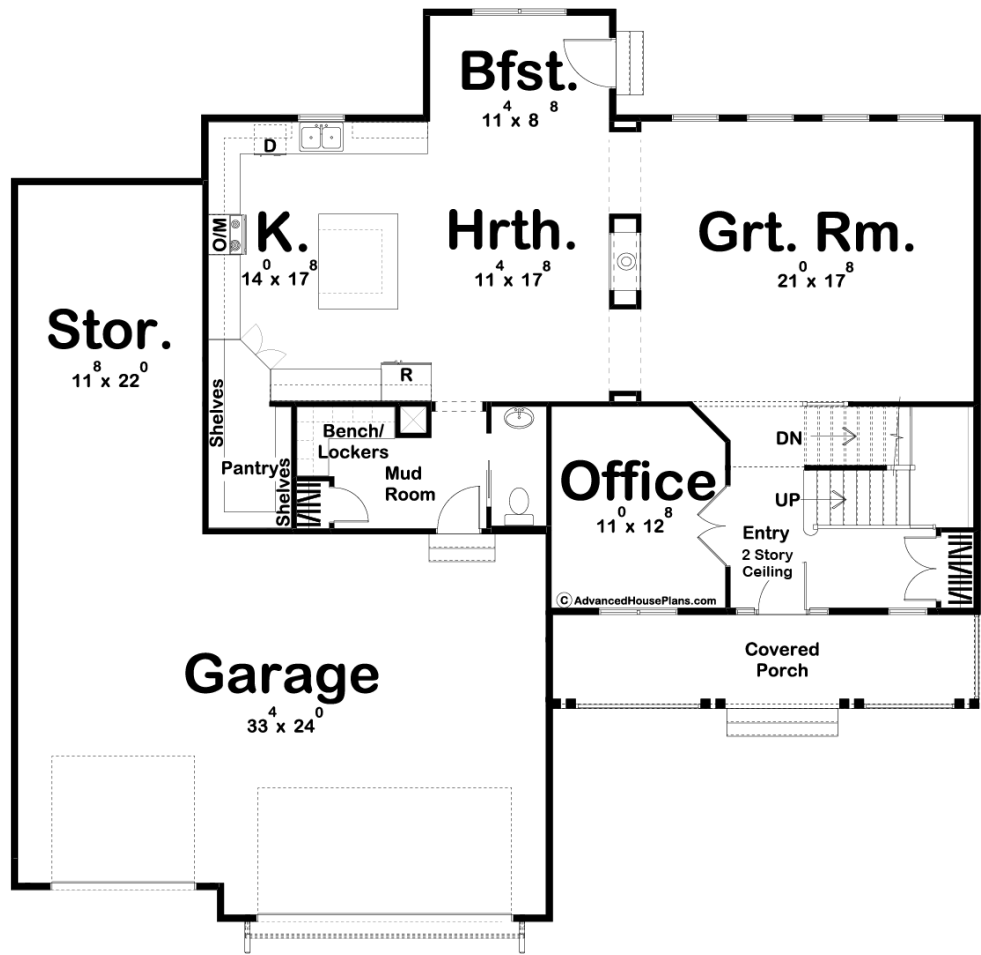
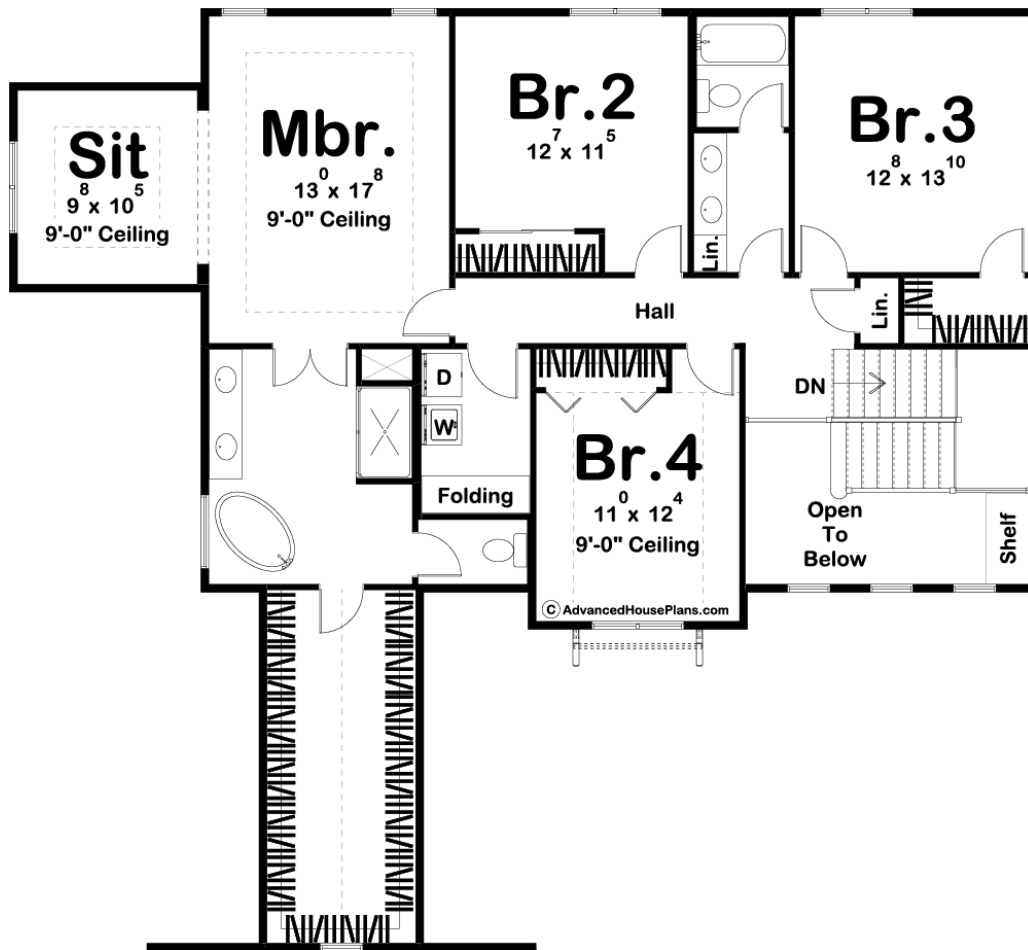




29755 - Anderson Data Sheet

3046 SQ FT	4 BEDS	3 BATHS	3 BAYS	61' 0" WIDE	58' 0" DEEP
---------------	-----------	------------	-----------	----------------	----------------





Construction Specs

Layout

Bedrooms	4
Bathrooms	3
Garage Bays	3

Square Footage

Main Level	1505 Sq. Ft.
Second Level	1541 Sq. Ft.
Garage	1069 Sq. Ft.
Total Finished Area	3046 Sq. Ft.

Exterior Dimensions

Width	61' 0"
Depth	58' 0"
Ridge Height	28' 0"
<i>Calculated from main floor line</i>	

Default Construction Stats
Stats are unique to the individual plan.

Foundation Type	Basement
Exterior Wall Construction	2x4
Roof Pitches	6/12 Primary, 4/12 12/12 Secondary
Foundation Wall Height	9'
Main Wall Height	10'
Second Wall Height	8'

Plan Description

Board and batten siding combined with stone and metal roof accents give the Anderson house a distinct Modern Farmhouse look. The gorgeous exterior of this home will make your neighbors envious. One step inside the home and you'll fall in love with this floor plan. Just inside the home, you'll find a wonderful home office with french doors. As you walk further into the home, you'll be blown away by the large double-sided fireplace that separates the great room from the hearth room. The home's kitchen includes a massive island and a large walk-in pantry. Upstairs, you will find 4 bedrooms including a dream master suite. The master bedroom has a trayed ceiling and includes a sitting room. The master bathroom has his/her vanities, a corner soaking tub, an enclosed toilet area, and a massive walk-in closet. Bedrooms 2,3, and 4 share a centrally located hall bathroom. Also on the second level, there is a convenient laundry room with a folding counter. Back on the main level the homes large 3 car garage includes a large storage area and accesses the home through a convenient mudroom that has a bench and lockers.