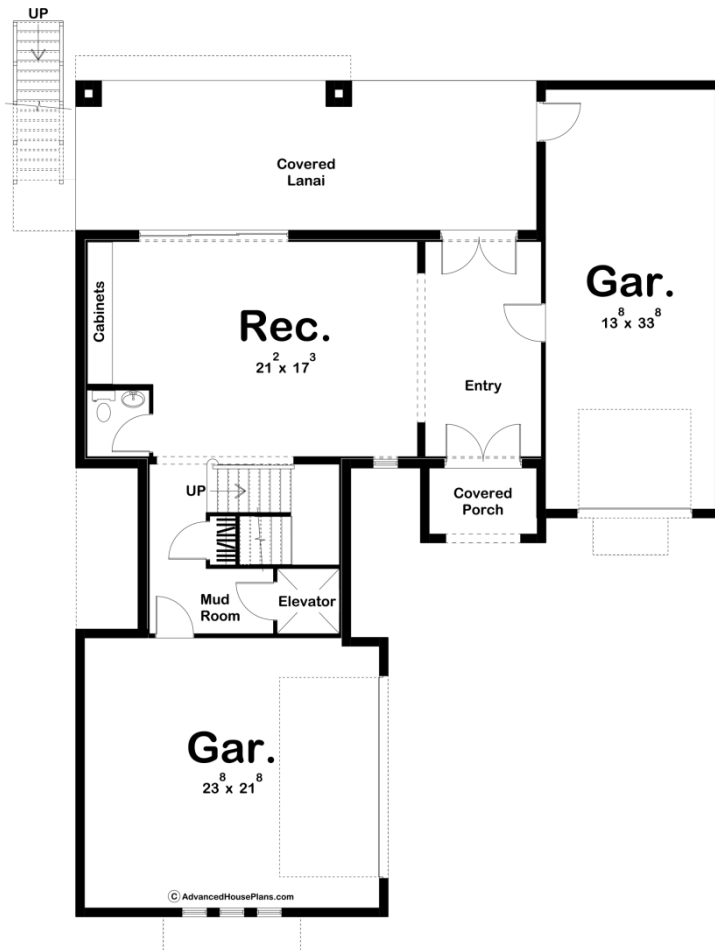
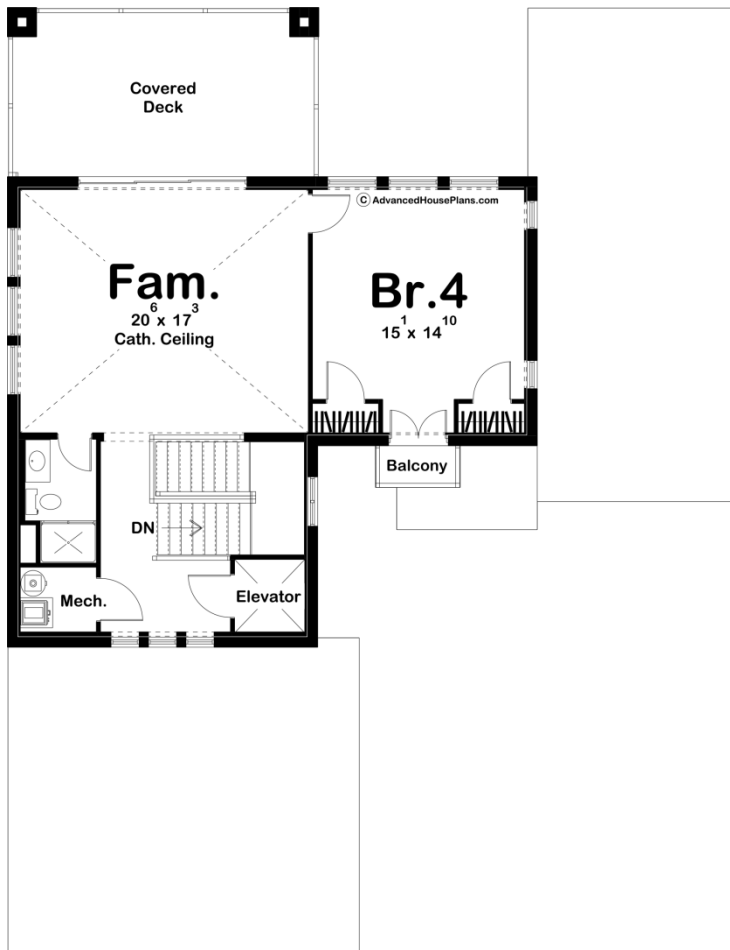
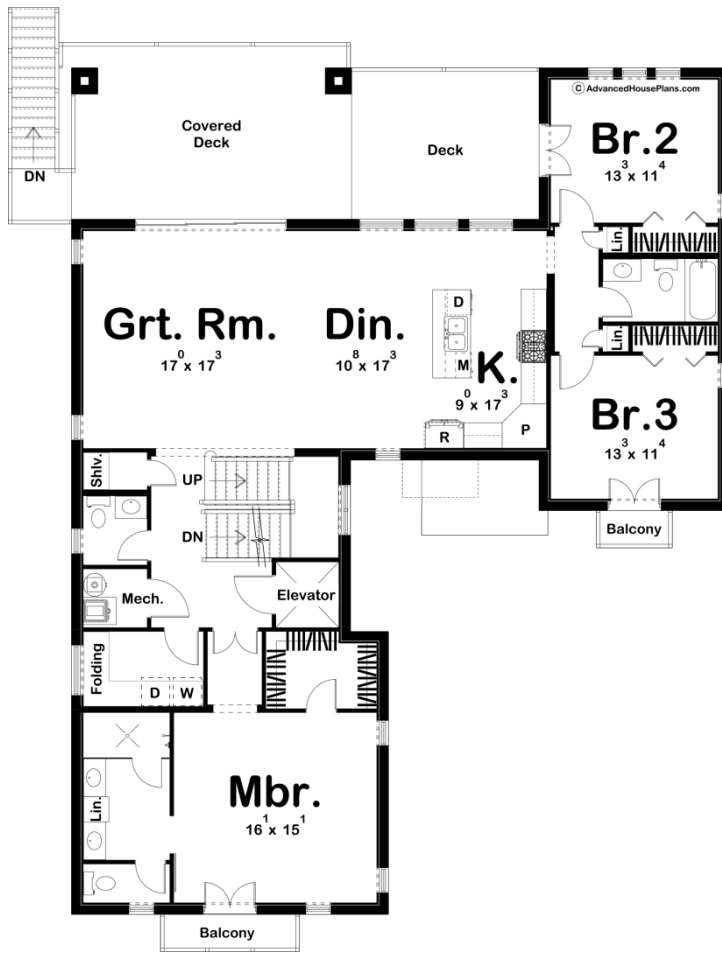




29915 - Anna Maria Data Sheet

3897 SQ FT	4 BEDS	5 BATHS	3 BAYS	52' 0" WIDE	67' 0" DEEP
---------------	-----------	------------	-----------	----------------	----------------





Construction Specs

Layout

Bedrooms	4
Bathrooms	5
Garage Bays	3

Square Footage

Main Level	947 Sq. Ft.
Second Level	2005 Sq. Ft.
Third Level	945 Sq. Ft.
Garage	1075 Sq. Ft.
Total Finished Area	3897 Sq. Ft.

Exterior Dimensions

Width	52' 0"
Depth	67' 0"

Default Construction Stats

Stats are unique to the individual plan.

Foundation Type	Slab
Exterior Wall Construction	CMU Block
Roof Pitches	4/12 Primary
Main Wall Height	10'
Second Wall Height	10'
Third Wall Height	10'

Plan Description

Anna Maria is a jaw-dropping Beach house plan that is sure to leave you amazed. The tough exterior CMU block wall construction is perfect for homes facing the elements on the ocean. The front of the home is highlighted by its split load garage and wood accent beams. A trio of Juliet balconies adds a unique style to the facade of this home. The rear of the home features three levels of outdoor entertainment space including a covered lanai and two covered decks. Large windows on the rear of the home provide excellent waterfront views from anywhere in the house. Inside the home, the main level includes a rec area with built-in cabinets and access to the home's elevator. The second floor features the main living area. The kitchen, dining room, and great room are arranged in an open layout. The kitchen includes an island and a large pantry. Three bedrooms can also be found on the second floor including the master suite. The master suite features his/her vanities, an enclosed toilet area, and a walk-in closet. The third floor includes a large family room and another bedroom.