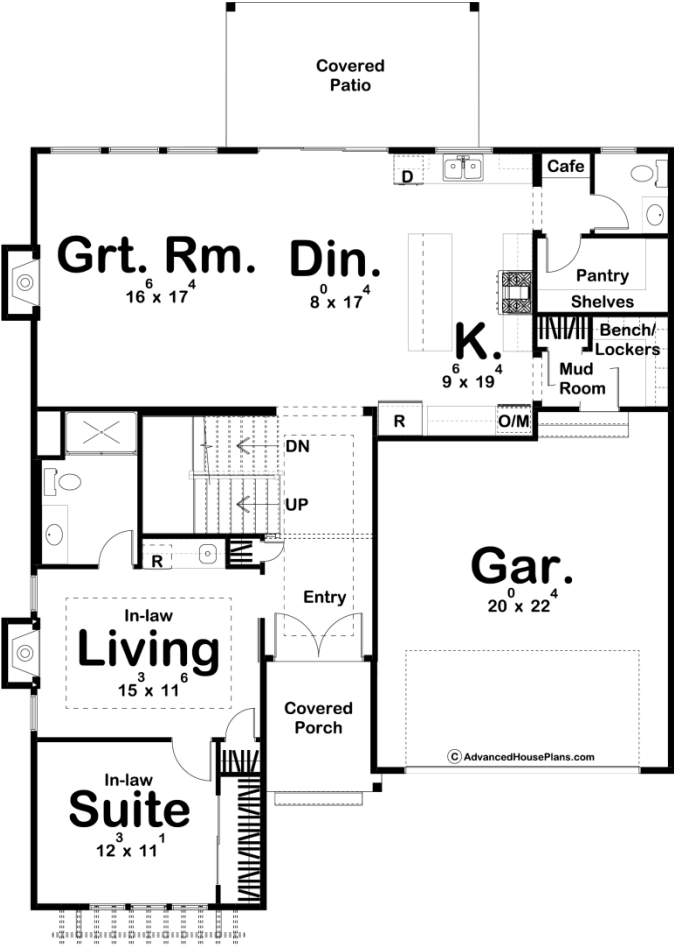
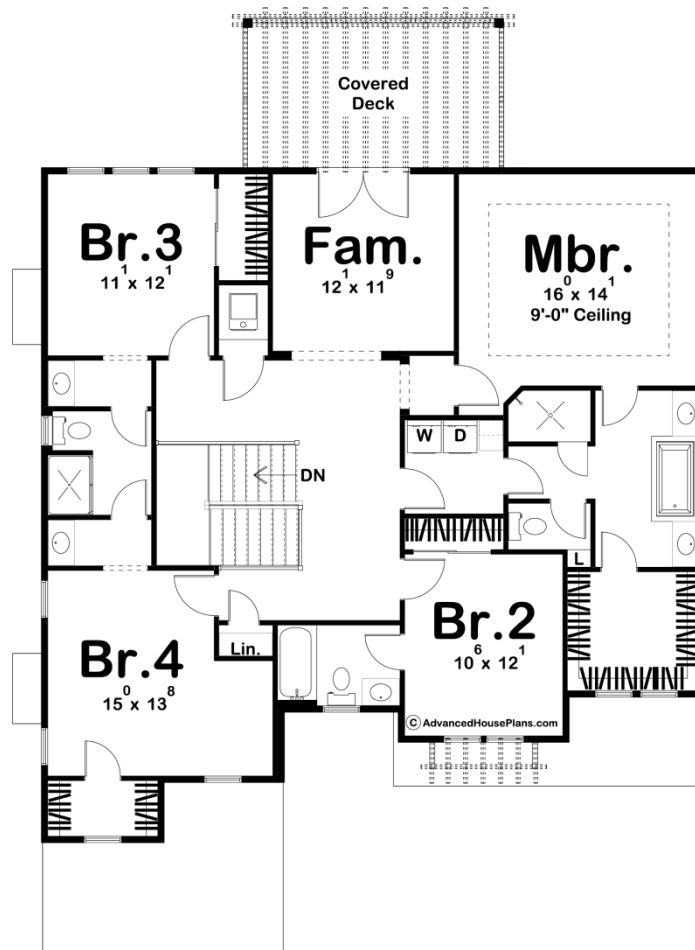




29865 - Archery Data Sheet

3124 SQ FT	5 BEDS	5 BATHS	2 BAYS	46' 8" WIDE	62' 0" DEEP
---------------	-----------	------------	-----------	----------------	----------------





## Construction Specs

### Layout

Bedrooms	5
Bathrooms	5
Garage Bays	2

### Square Footage

Main Level	1493 Sq. Ft.
Second Level	1631 Sq. Ft.
Garage	478 Sq. Ft.
Total Finished Area	3124 Sq. Ft.

### Exterior Dimensions

Width	46' 8"
Depth	62' 0"
Ridge Height	28' 0"
<i>Calculated from main floor line</i>	

**Default Construction Stats**  
*Stats are unique to the individual plan.*

Foundation Type	Basement
Exterior Wall Construction	2x4
Roof Pitches	6/12 Primary, 10/12 Secondary
Foundation Wall Height	9'
Main Wall Height	9'
Second Wall Height	8'

**Plan Description**

A combination of board and batten siding and gables give the Archery plan a decisive Modern Farmhouse look. One step inside and you'll feel right at home with this well thought out floorplan. On the main floor, you will find a lovely in-law suite that includes a living room that is warmed by a fireplace, a suite, and a bathroom. Further, into the home, you'll find a large great room that is warmed by a fireplace. The kitchen includes a large working island along with a walk-in pantry. Just off the rear of the dining room and kitchen is a wonderful covered patio that is perfect for outdoor entertaining. On the second floor, you will find 4 bedrooms and a family room. The master suite is a homeowner's dream with his/her vanities, a soaking tub, an enclosed toilet area, a large walk-in closet, and access to the laundry area. Bedrooms 3 and 4 share a jack and jill bathroom, while bedroom 2 has access to its own bathroom. Back on the main floor, the 2 car garage accesses the home through a convenient mudroom complete with bench/lockers.