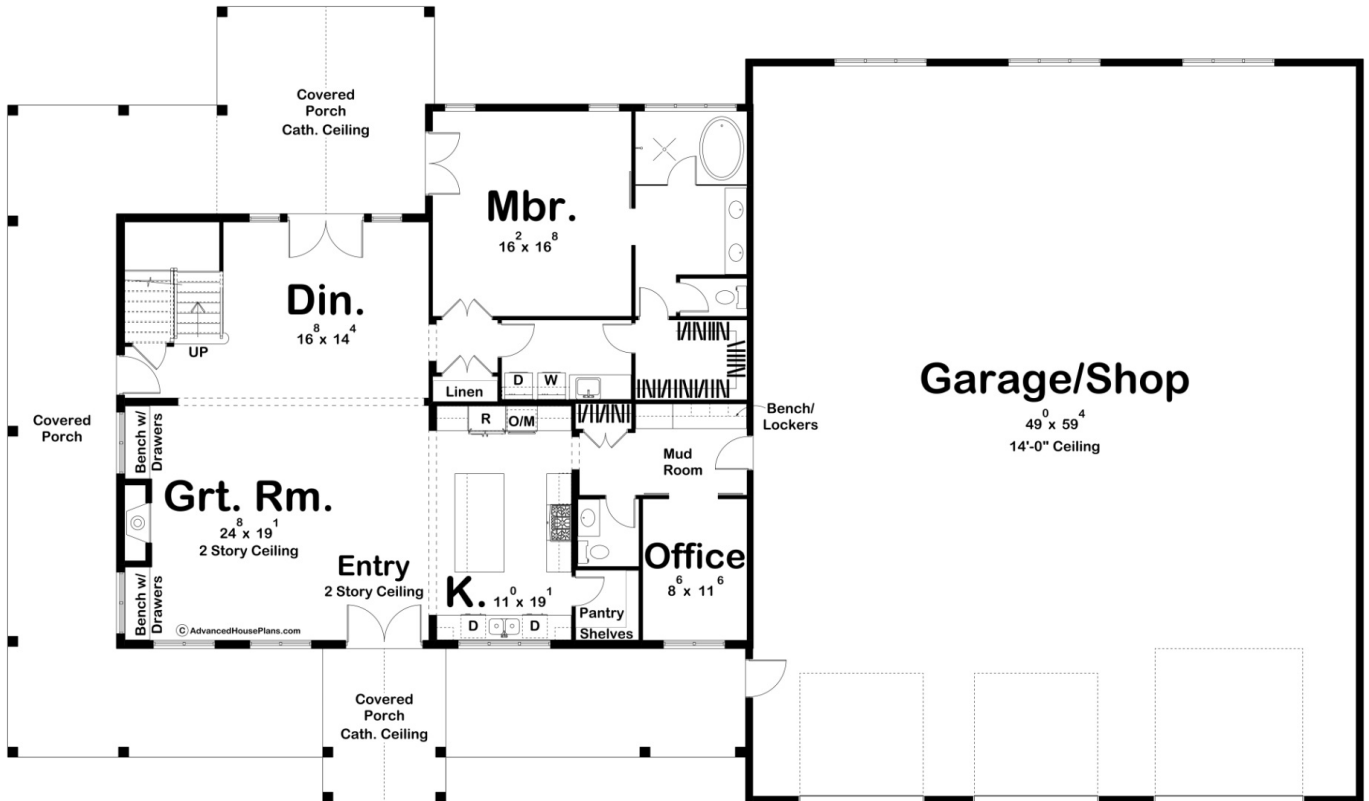
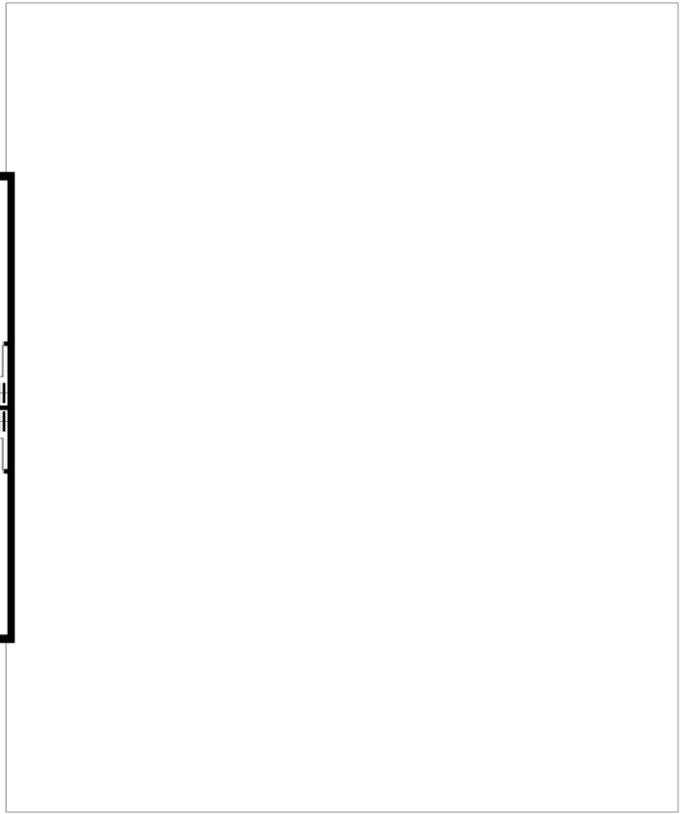
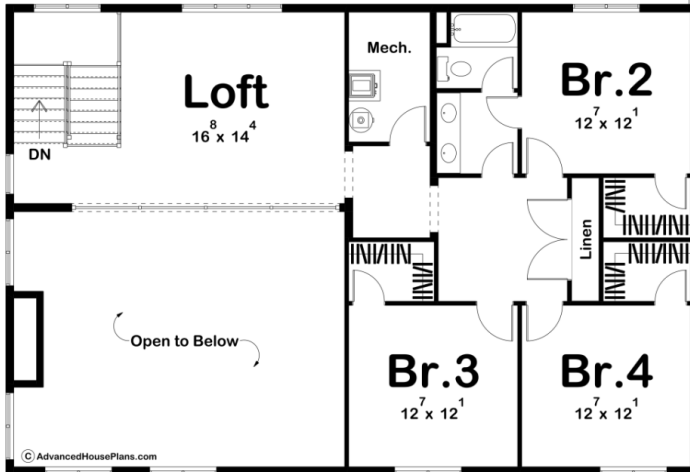




**30178 - Arlington Heights Data Sheet**

3293 SQ FT	4 BEDS	3 BATHS	3 BAYS	110' 0" WIDE	64' 8" DEEP
---------------	-----------	------------	-----------	-----------------	----------------





## Construction Specs

### Layout

Bedrooms	4
Bathrooms	3
Garage Bays	3

### Square Footage

Main Level	2043 Sq. Ft.
Second Level	1250 Sq. Ft.
Covered Area	1335 Sq. Ft.
Garage	2998 Sq. Ft.
Total Finished Area	3293 Sq. Ft.

### Exterior Dimensions

Width	110' 0"
Depth	64' 8"
Ridge Height	30' 0"
<i>Calculated from main floor line</i>	

## Default Construction Stats

*Stats are unique to the individual plan.*

Foundation Type	Slab
Exterior Wall Construction	2x6
Roof Pitches	6/12 Primary, 3/12 10/12 Secondary
Main Wall Height	9'
Second Wall Height	8'

## Plan Description

If you are a fan of Barndominium-style homes, the Arlington Heights will quickly become a favorite. The exterior showcases dark-colored board and batten siding, wood accents, and wood garage doors. A large wrap-around porch greets guests into the beautiful home. One step through the Barndominium front set of french doors leads guests into the entry and great room. The great room lies under a 2 story ceiling and is warmed by a fireplace flanked by built-in benches with drawers. The kitchen includes a large island with a snack bar, a walk-in pantry, and ample counter space. Tucked away behind the kitchen you'll find a great home office. A large formal dining room can be found towards the rear of the home. The dining room leads through its own set of french doors to the rear of the wrap-around covered porch. The master suite can be conveniently located on the main floor. The master bathroom includes his/her vanities, a wet room with a soaking tub, a large walk-in closet, and access to the laundry room. Upstairs in this Barndominium, you'll find 3 additional bedrooms. Each bedroom enjoys its own walk-in closet. A wonderful loft overlooks the great room below. Back on the main level, the Barndominium home's massive oversized 3-car garage includes an RV door and 14' ceilings.