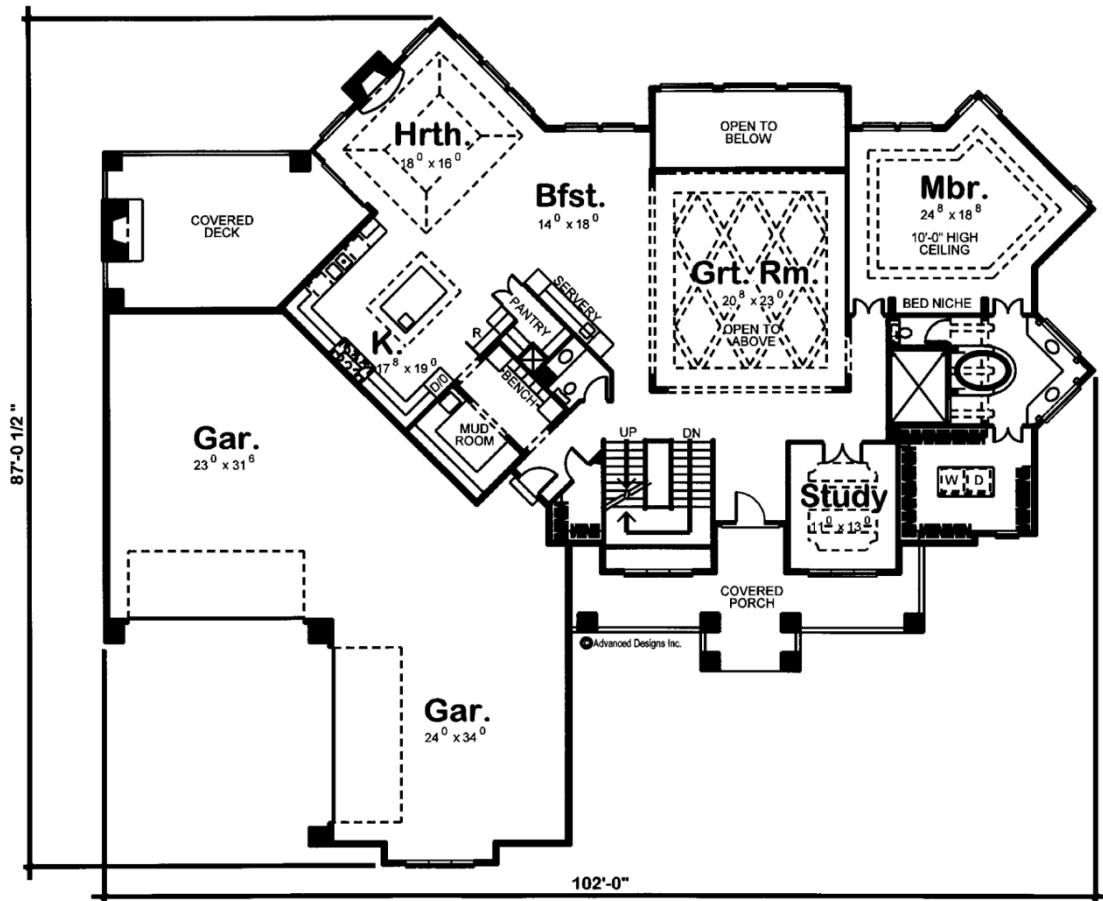
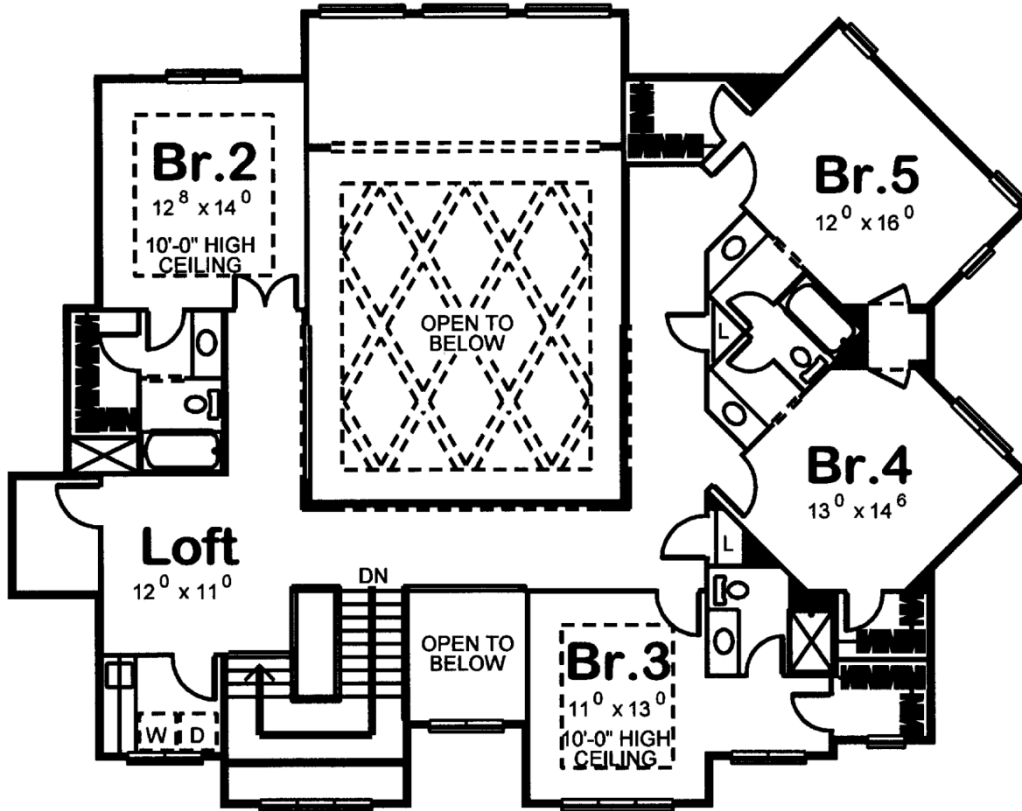


29077 - Ashland Manor Data Sheet

5010 SQ FT	5 BEDS	5 BATHS	4 BAYS	102' 0" WIDE	87' 0" DEEP
---------------	-----------	------------	-----------	-----------------	----------------





Construction Specs

Layout	
Bedrooms	5
Bathrooms	5
Garage Bays	4
Square Footage	
Main Level	3268 Sq. Ft.
Second Level	1742 Sq. Ft.
Garage	1753 Sq. Ft.
Total Finished Area	5010 Sq. Ft.
Exterior Dimensions	
Width	102' 0"
Depth	87' 0"
Ridge Height	32' 0"
<i>Calculated from main floor line</i>	

Default Construction Stats

Stats are unique to the individual plan.

Foundation Type	Basement
Exterior Wall Construction	2x4
Roof Pitches	6/12
Foundation Wall Height	9'
Main Wall Height	10'
Second Wall Height	9'

Plan Description

Tapered front porch columns and decorative bracket detailing help cast the character of this fabulous Craftsman-style 1-1/2 story house plan. Inside, a seemingly endless array of amenities and design features await. From the entry hall, immediate views reveal an impressive great room with a 2-story-high ceiling.

At the rear of the great room, a soaring 3-story-high atrium -- open from the basement to the second level -- is illuminated by a bright bank of windows. Angled to the side of the great room, a breakfast area, hearth room, and kitchen lie in an open arrangement. Entertaining options extend to the outdoors, where a covered deck with outdoor fireplace is accessed by the hearth room. The kitchen boasts ample counter space along with an island work area and walk-in pantry. Just off the kitchen, a practical servery with sink enhances the function of the breakfast area. Just off the kitchen, a mud room with counter space and built-in bench leads to an entry alcove -- with powder bath and a walk-in closet -- that accesses the 4-car garage. The master suite is privately tucked away in an alcove off the great room and is just steps away from a sun-lit study. The master bedroom, with a 10-foot-high-ceiling, is defined by intriguing angles and includes a built-in bed niche. The pampering bath area includes angled his-and-her vanities, an opulent oval soaking tub, large walk-in shower, compartmented toilet and a walk-in closet that features a washer and dryer. Upstairs, all secondary bedrooms have walk-in closets. Bedrooms 2 and 3 enjoy their own baths. Bedrooms 4 and 5 share a Jack-n-Jill bath. Impressive bird's eye views of the great room below are enjoyed throughout the upper level from the bedroom halls. A loft area at the top of the stairway accesses a laundry room and storage area.