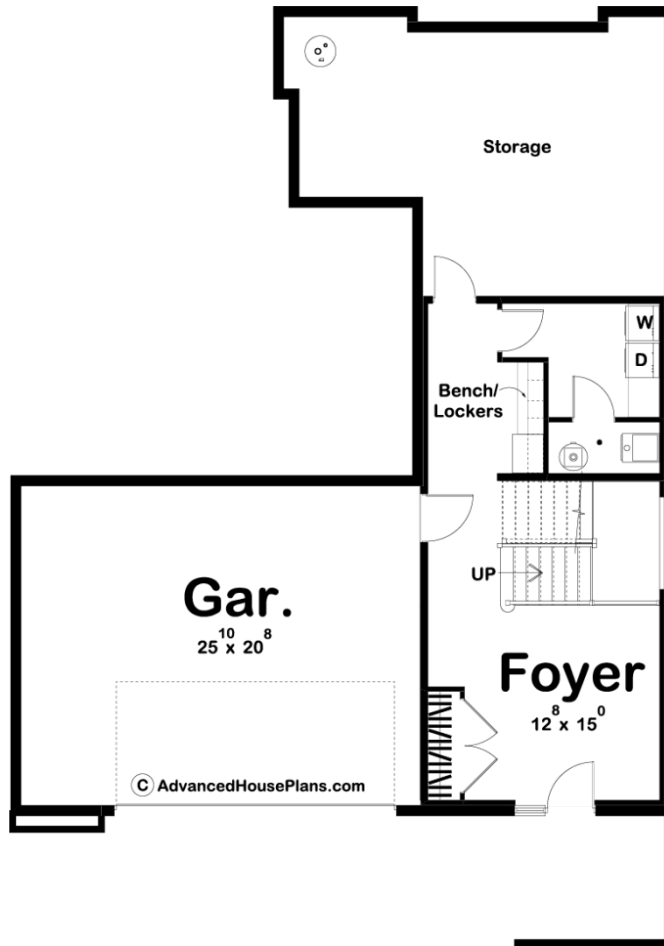
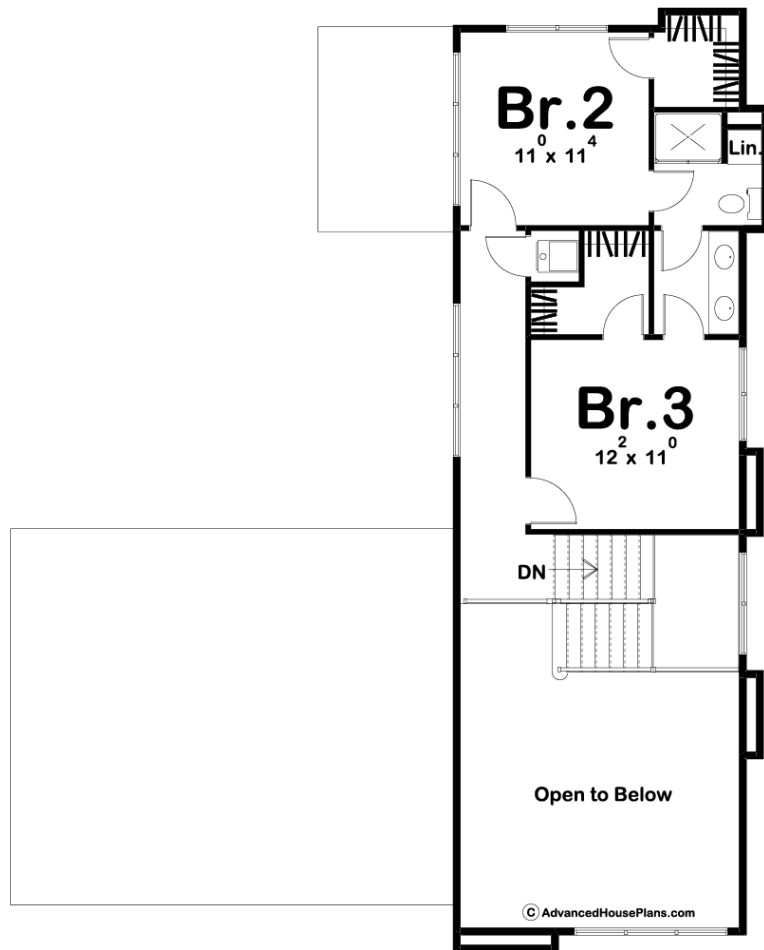
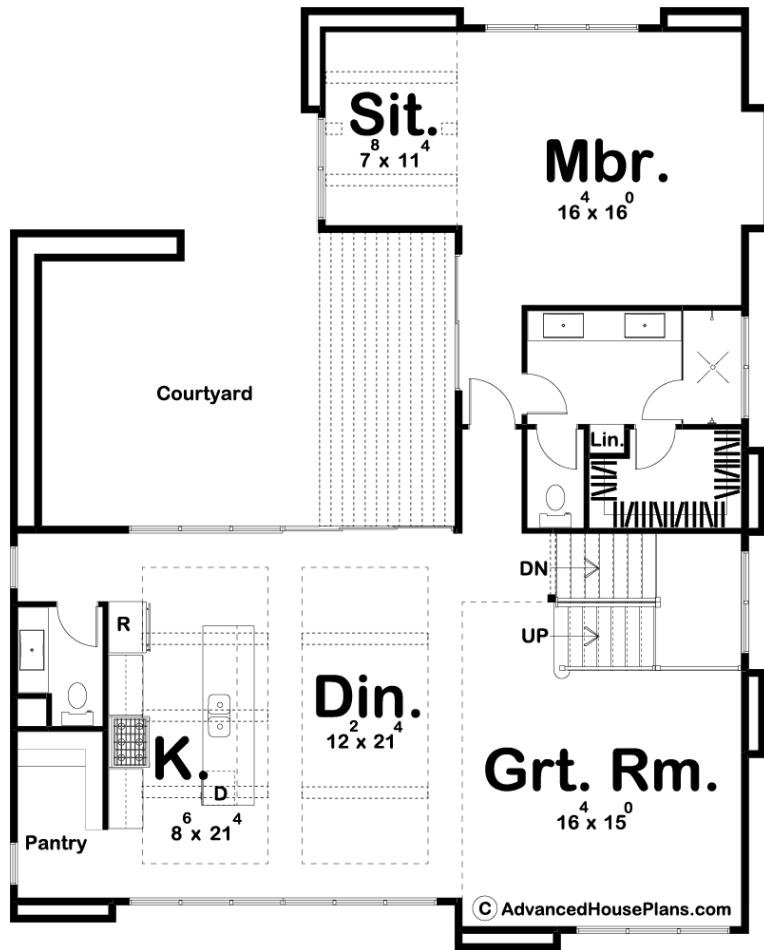




29641 - Aubrey Data Sheet

| | | | | | |
|---------------|-----------|------------|-----------|----------------|----------------|
| 2682 SQ FT | 3 BEDS | 3 BATHS | 2 BAYS | 45' 0" WIDE | 55' 0" DEEP |
|---------------|-----------|------------|-----------|----------------|----------------|





Construction Specs

Layout

| | |
|-------------|---|
| Bedrooms | 3 |
| Bathrooms | 3 |
| Garage Bays | 2 |

Square Footage

| | |
|---------------------|--------------|
| Main Level | 1579 Sq. Ft. |
| Second Level | 543 Sq. Ft. |
| Basement Level | 560 Sq. Ft. |
| Garage | 583 Sq. Ft. |
| Total Finished Area | 2682 Sq. Ft. |

Exterior Dimensions

| | |
|--|--------|
| Width | 45' 0" |
| Depth | 55' 0" |
| Ridge Height <i>Calculated from main floor line</i> | 20' 0" |

Default Construction Stats

Stats are unique to the individual plan.

| | |
|----------------------------|----------|
| Foundation Type | Basement |
| Exterior Wall Construction | 2x4 |
| Roof Pitches | Flat |
| Foundation Wall Height | 9' |
| Main Wall Height | 9' |
| Second Wall Height | 8' |

Plan Description

If you are looking for curb appeal, look no further. The Aubrey plans exterior brings together cedar, stucco and lots of glass to give it the ultimate modern look. Once you step into the house, you will be amazed by the natural light that flows through the open floor plan with its large windows in the front and back. The kitchen includes a walk-in pantry and a large island with a breakfast bar. The dining room, along with the kitchen, has exposed wood beams to lend a modern feel to the space. You will find the master suite situated perfectly on the main floor with access to this plan's great outdoor space. A courtyard with built-in planters can be accessed from the master suite as well as the main living space. Upstairs bedrooms 2 and 3 share a jack and jill bathroom.