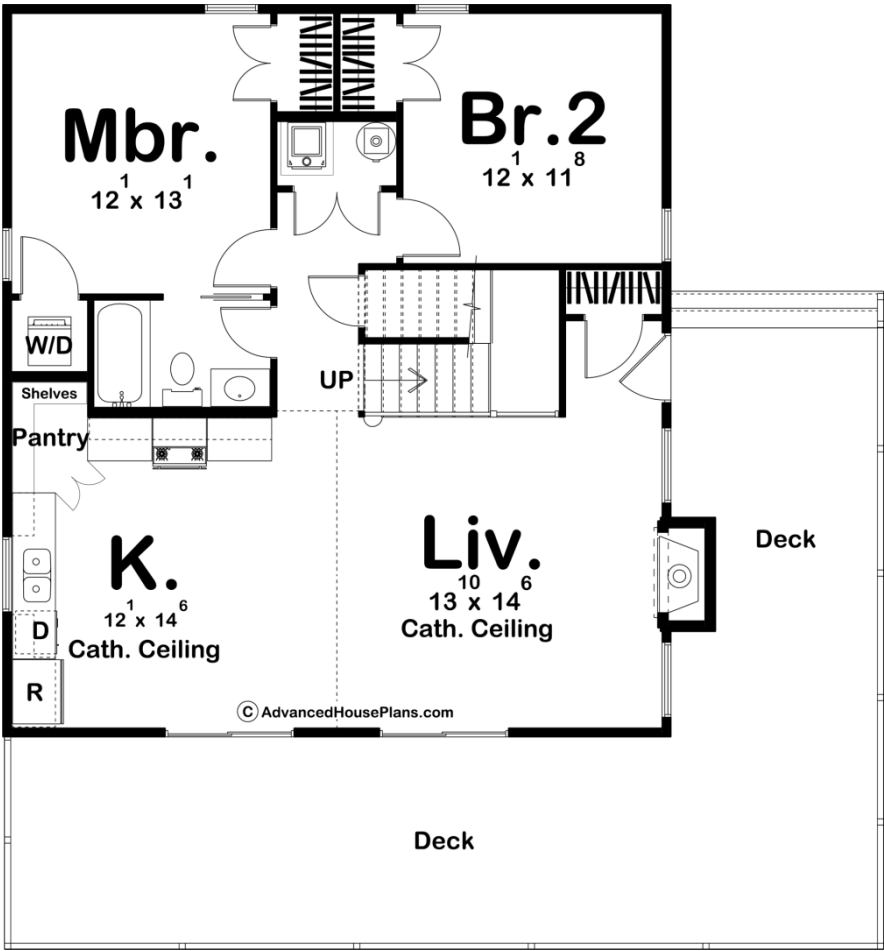
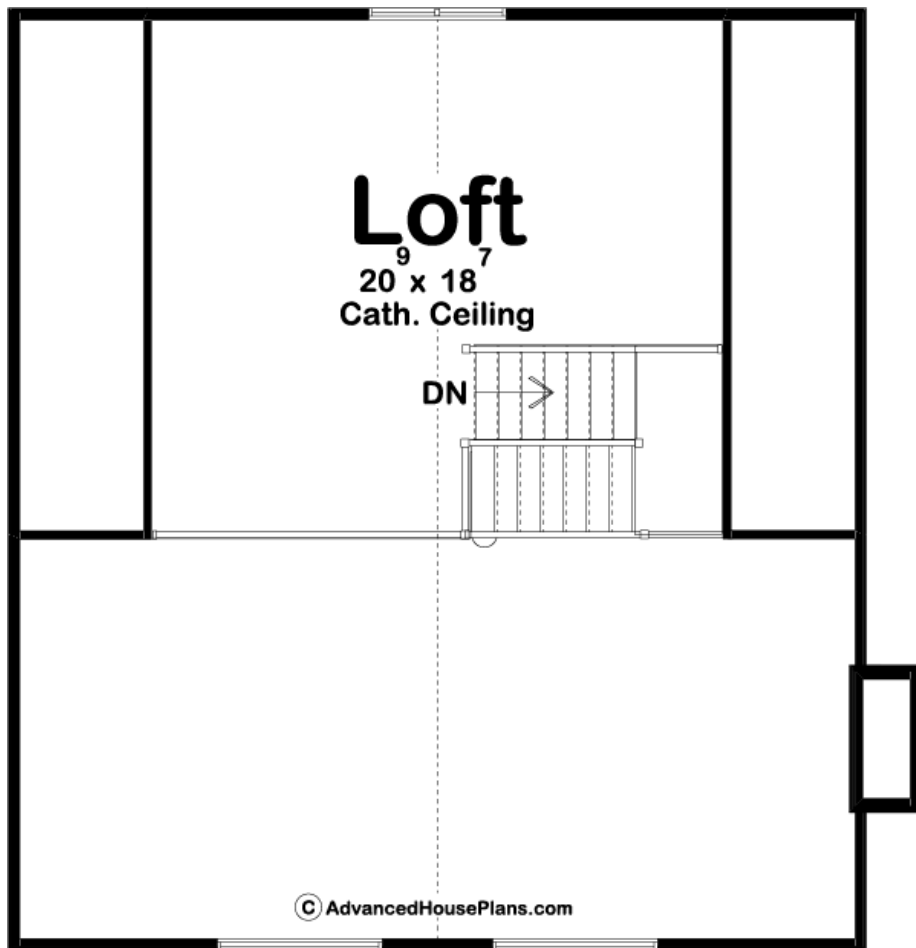




29743 - Bellwood Data Sheet

1395 SQ FT	2 BEDS	1 BATHS	0 BAYS	41' 0" WIDE	44' 0" DEEP
---------------	-----------	------------	-----------	----------------	----------------





## Construction Specs

### Layout

Bedrooms	2
Bathrooms	1

### Square Footage

Main Level	1054 Sq. Ft.
Second Level	341 Sq. Ft.
Total Finished Area	1395 Sq. Ft.

### Exterior Dimensions

Width	41' 0"
Depth	44' 0"

### Default Construction Stats

*Stats are unique to the individual plan.*

Foundation Type	Crawlspace
Exterior Wall Construction	2x4
Roof Pitches	10/12 Primary

## Plan Description

Whether you are looking for a place to get away or an efficient space to call home, the Bellwood cabin is a perfect fit. The exterior of this traditional style cabin has wonderful curb appeal with its spacious wrap-around deck and large windows. As soon as you walk through the door, you enter a wonderful open main floor that rests under a soaring cathedral ceiling. The generously sized great room is warmed by a fireplace and has access to the wrap-around deck through a sliding glass door. The kitchen is well equipped and includes a walk-in pantry. The main floor includes 2 bedrooms that share a conveniently located hall bathroom. The master bedroom has its own access to the bathroom. On the upper floor, you will find a massive loft space that can be used for multiple purposes such as extra sleeping space, a home office, or an art studio.