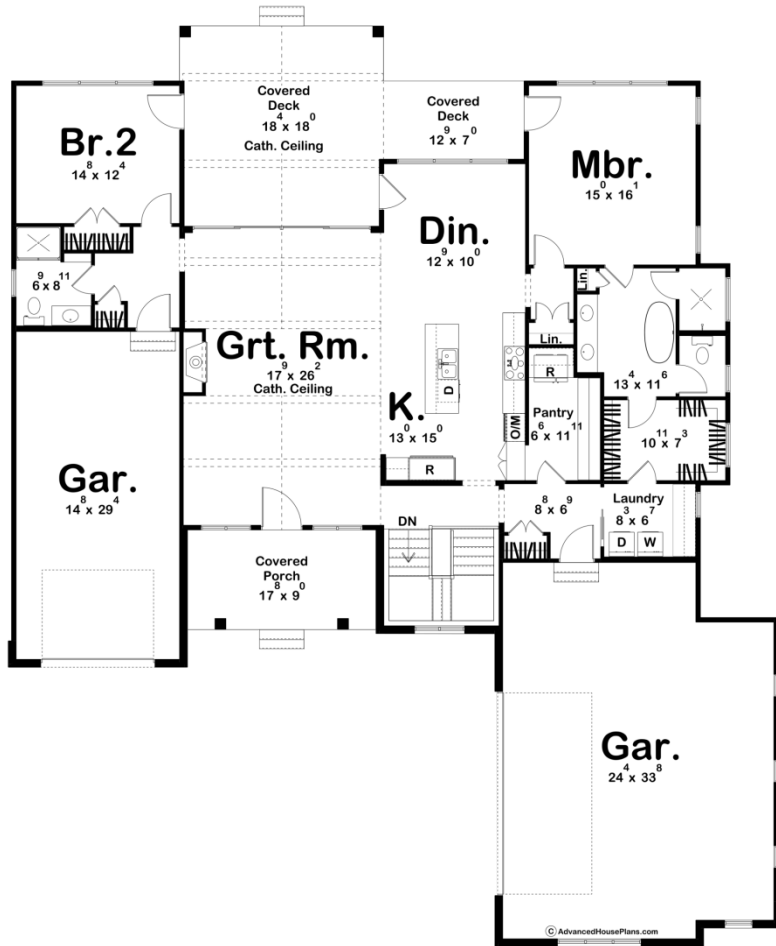
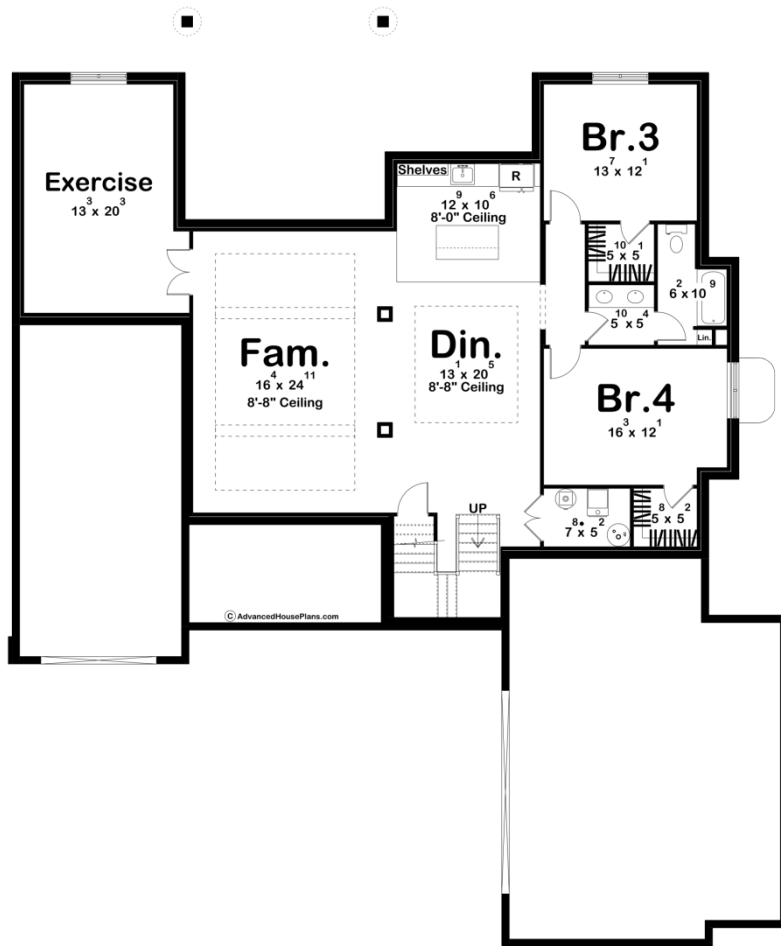




**30219 - Bergman Data Sheet**

2078 SQ FT	2 BEDS	2 BATHS	3 BAYS	68' 8" WIDE	82' 0" DEEP
---------------	-----------	------------	-----------	----------------	----------------





## Construction Specs

### Layout

Bedrooms	2
Bathrooms	2
Garage Bays	3

### Square Footage

Main Level	2078 Sq. Ft.
Covered Area	571 Sq. Ft.
Garage	1250 Sq. Ft.
Total Finished Area	2078 Sq. Ft.

### Exterior Dimensions

Width	68' 8"
Depth	82' 0"
Ridge Height	19' 0"
<i>Calculated from main floor line</i>	

## Default Construction Stats

*Stats are unique to the individual plan.*

Foundation Type	Basement
Exterior Wall Construction	2x4
Roof Pitches	Primary 10/12, Secondary 4/12, 5/12, 6/12 8/12
Foundation Wall Height	9'
Main Wall Height	10'

## Plan Description

Introducing the stunning design of a modern Craftsman-style house plan that exudes timeless elegance and functionality. This two-bedroom, two-bathroom home offers a seamless blend of classic architectural elements and contemporary features, creating a welcoming and comfortable living space for its occupants. As you approach the house, you are greeted by a charming exterior characterized by a combination of natural materials, such as stone and wood, and a welcoming covered entryway. The Craftsman-style details, including decorative brackets, shake siding, and carefully placed windows, add a sense of warmth and character to the facade. Upon entering, you'll find yourself in a spacious and open great room, the heart of the home. The soaring cathedral ceiling immediately captures your attention, with exposed beams running from one end to the other, adding a touch of rustic charm. Natural light pours in through large sliding doors, creating an airy and inviting atmosphere. The great room seamlessly connects to a covered deck, providing an ideal space for outdoor relaxation and entertaining. The kitchen is thoughtfully designed with both style and functionality in mind. It features high-quality cabinetry, sleek countertops, and modern appliances. A notable highlight of the kitchen is the walk-in pantry, providing ample storage space for all your culinary needs. The primary bedroom is a peaceful retreat, complete with an ensuite bathroom and a generous walk-in closet. The second bedroom is conveniently located near the second bathroom, ensuring privacy and comfort for all occupants. This house plan also boasts a practical layout with attached garages. There is a spacious two-car garage for your main vehicles, providing plenty of room for storage and easy access to the house. Additionally, a separate one-car garage offers flexibility for housing an additional vehicle, storage, or a workshop. With its blend of classic Craftsman elements and modern amenities, this house plan exemplifies the perfect balance between style and functionality. It offers a comfortable and welcoming environment, ideal for those seeking a home that celebrates the craftsmanship of the past while embracing the conveniences of modern living.