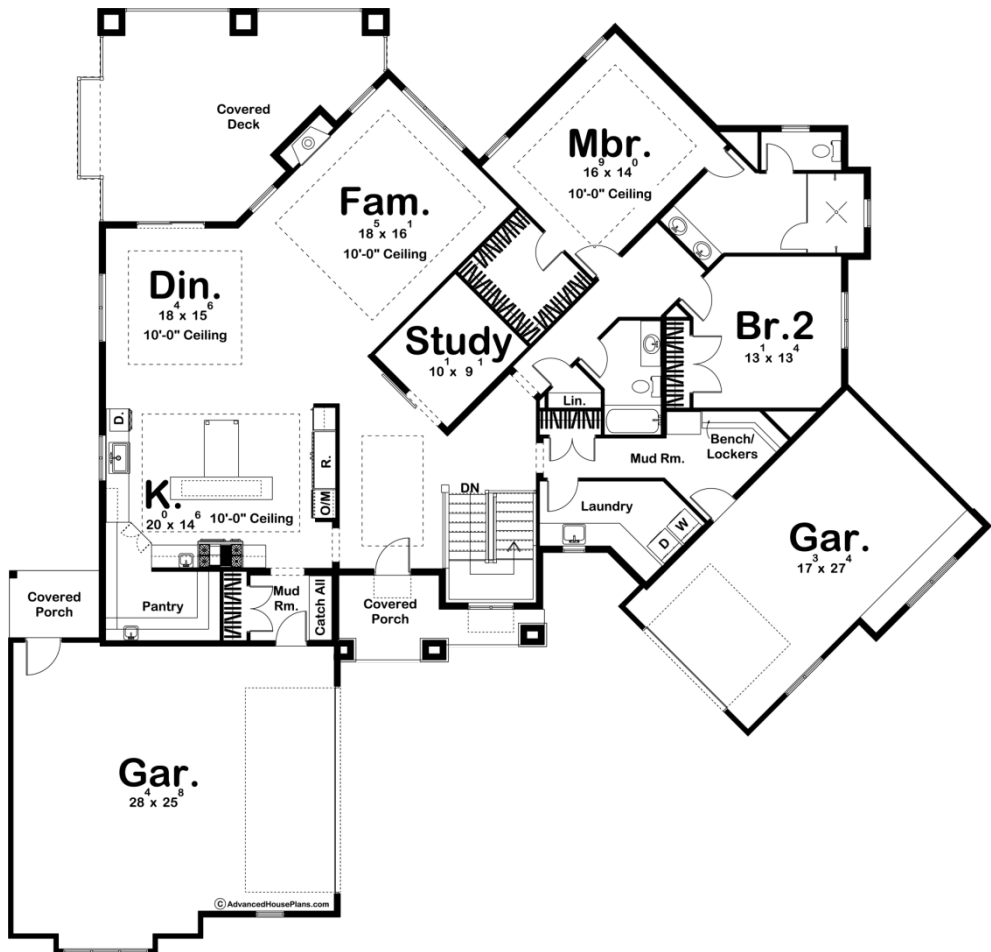




29521 - Birkdale Data Sheet

2590 SQ FT	2 BEDS	2 BATHS	3 BAYS	87' 0" WIDE	83' 0" DEEP
---------------	-----------	------------	-----------	----------------	----------------



Construction Specs

Layout
--------

Bedrooms	2
----------	---

Bathrooms	2
Garage Bays	3
<b>Square Footage</b>	
Main Level	2590 Sq. Ft.
Garage	1185 Sq. Ft.
Total Finished Area	2590 Sq. Ft.
<b>Exterior Dimensions</b>	
Width	87' 0"
Depth	83' 0"
Ridge Height <i>Calculated from main floor line</i>	24' 0"
<b>Default Construction Stats</b> <i>Stats are unique to the individual plan.</i>	
Foundation Type	Basement
Exterior Wall Construction	2x4
Roof Pitches	8/12 Primary, 10/12 Secondary
Foundation Wall Height	9'
Main Wall Height	9'

## Plan Description

Nothing says "home" like a Farm Style house plan, and this family friendly 1-story design speaks volumes. This home extends a warm welcome to passersby. Inside, you'll find a spacious open floor plan leading into a large family room with a fireplace. The master suite offers a large walk-in closet and a master bath with a compartmented toilet. Mud rooms with bench, lockers provide a practical barrier between the living areas and the smartly designed garage areas, which have space for three vehicles.