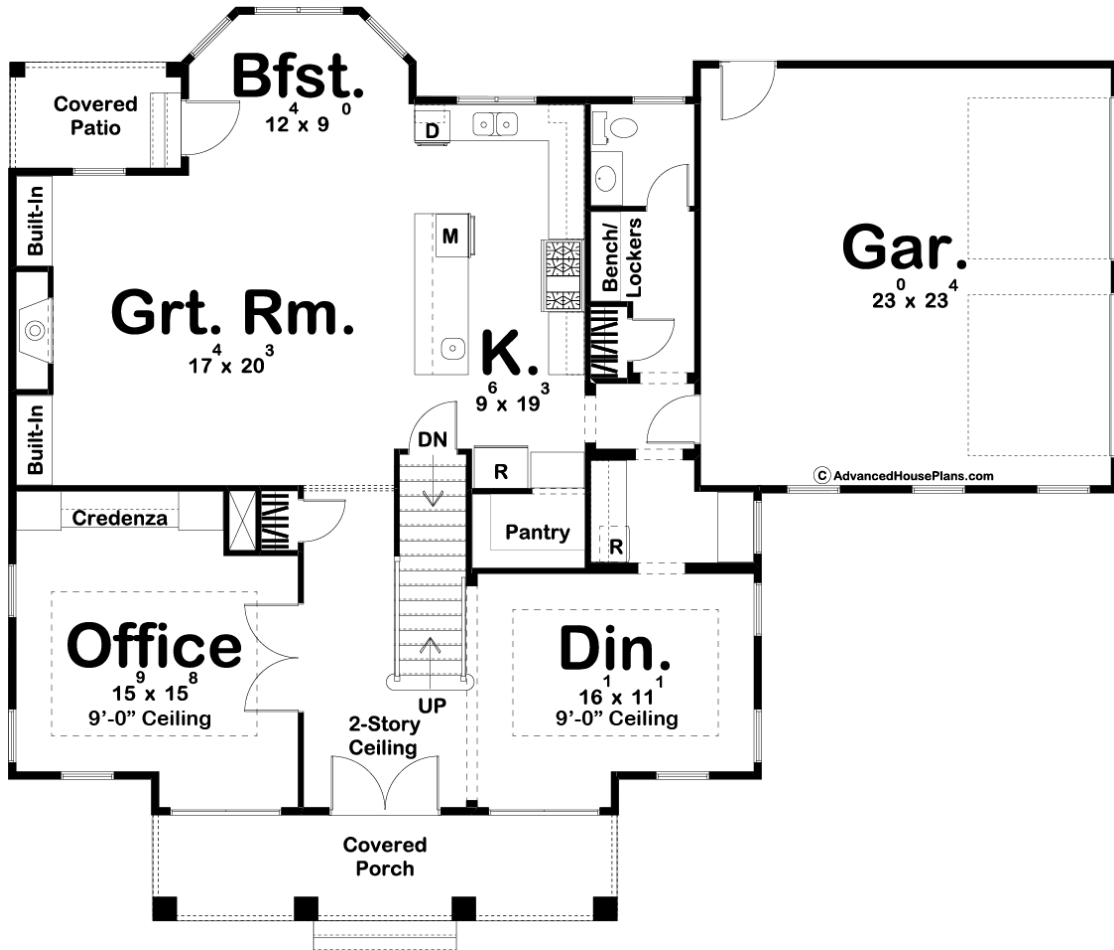
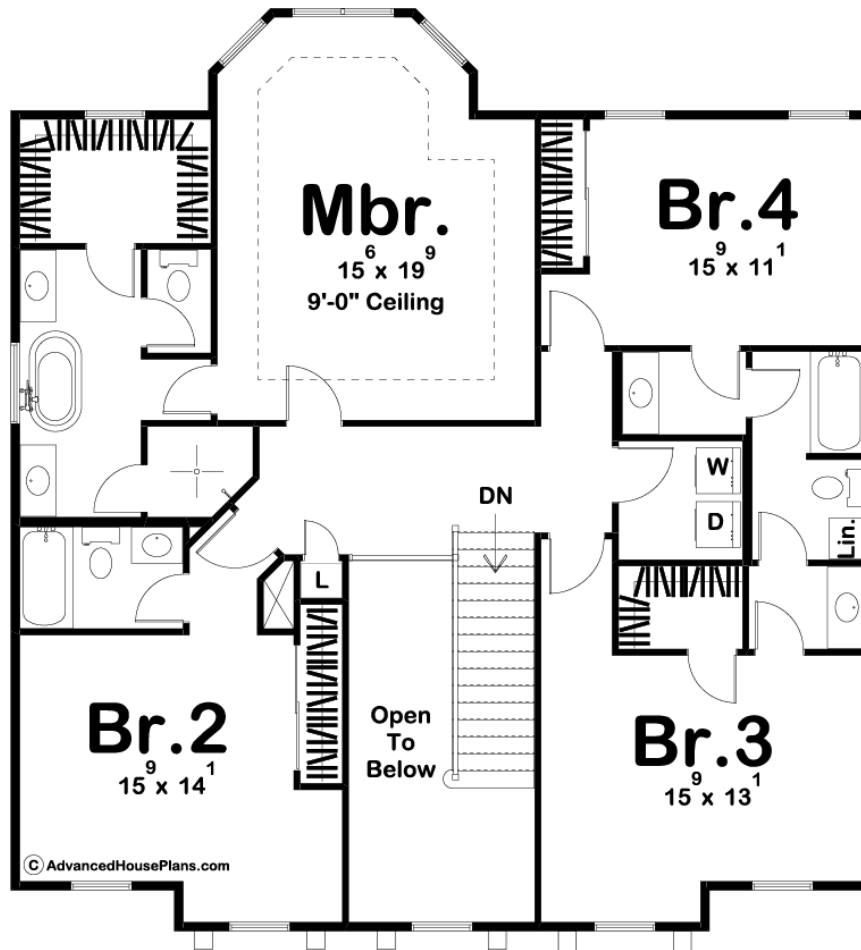




**29800 - Birmingham Data Sheet**

3121 SQ FT	4 BEDS	4 BATHS	2 BAYS	62' 0" WIDE	51' 0" DEEP
---------------	-----------	------------	-----------	----------------	----------------





## Construction Specs

### Layout

Bedrooms	4
Bathrooms	4
Garage Bays	2

### Square Footage

Main Level	1588 Sq. Ft.
Second Level	1533 Sq. Ft.
Garage	560 Sq. Ft.
Total Finished Area	3121 Sq. Ft.

### Exterior Dimensions

Width	62' 0"
Depth	51' 0"
Ridge Height	30' 0"
<i>Calculated from main floor line</i>	

### Default Construction Stats

*Stats are unique to the individual plan.*

Foundation Type	Basement
Exterior Wall Construction	2x4
Roof Pitches	6/12 Primary, 12/12 Secondary
Foundation Wall Height	9'
Main Wall Height	9'
Second Wall Height	8'

## Plan Description

The Birmingham house will blow you away with its southern charm. The exterior is where the charm starts with its trio of gables and a large front covered porch. As you enter the home you will be greeted by a stunning 2 story entry. To the right of the entry you will find a formal dining room with a tray ceiling. On the other side of the entry you will find a wonderful office with a built-in credenza. Farther into the home, the great room is warmed by a fireplace that is flanked by built-in bookshelves. The large kitchen includes a walk-in pantry and a large island. A breakfast nook accesses a covered patio off the rear of the home. Upstairs you will find the bedrooms. The massive master suite includes his/her vanities, a soaking tub, a walk-in shower, an enclosed toilet, and a walk-in closet. Bedroom 2 has access to its own bathroom while bedrooms 3 and 4 share a jack and jill bathroom. Back on the main floor, the home's 2 car side load garage accesses the home through a convenient mudroom with a bench and lockers.