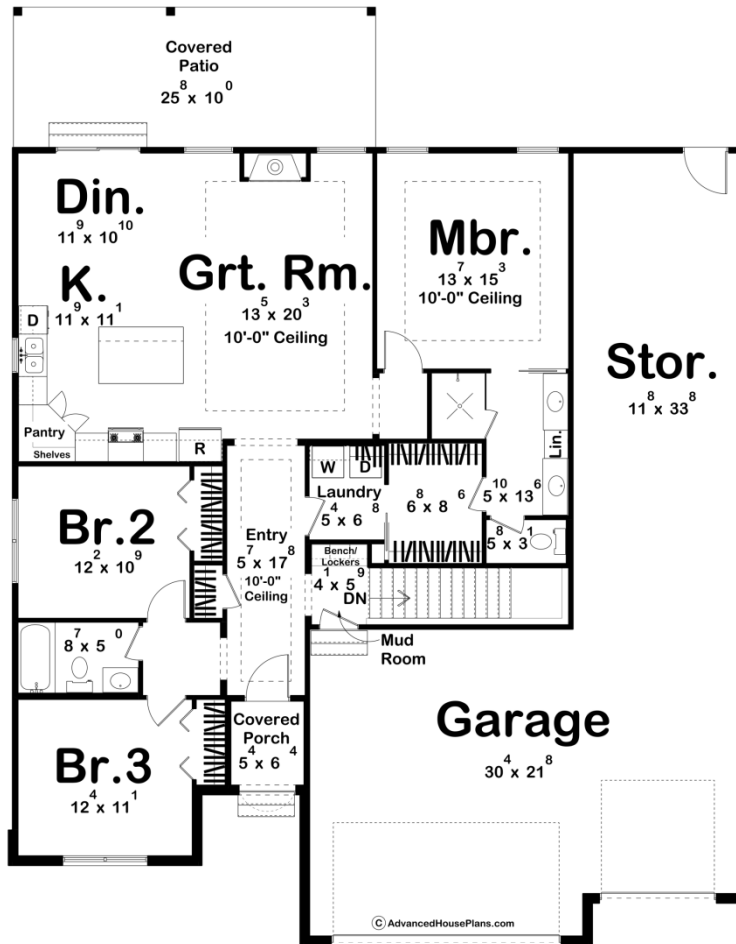




**29745 - Bordeaux Data Sheet**

1617 SQ FT	3 BEDS	2 BATHS	4 BAYS	52' 0" WIDE	66' 0" DEEP
---------------	-----------	------------	-----------	----------------	----------------



**Construction Specs**

Layout

Bedrooms

Bathrooms	2
-----------	---

Garage Bays	4
-------------	---

### Square Footage

Main Level	1617 Sq. Ft.
------------	--------------

Garage	1056 Sq. Ft.
--------	--------------

Total Finished Area	1617 Sq. Ft.
---------------------	--------------

### Exterior Dimensions

Width	52' 0"
-------	--------

Depth	66' 0"
-------	--------

### Default Construction Stats

*Stats are unique to the individual plan.*

Foundation Type	Basement
-----------------	----------

Exterior Wall Construction	2x4
----------------------------	-----

Roof Pitches	8/12 Primary, 12/12 Secondary
--------------	-------------------------------

Foundation Wall Height	9'
------------------------	----

Main Wall Height	9'
------------------	----

## Plan Description

A tasteful array of exterior textures complements the smart interior design of this Cottage style house plan. A covered front stoop leads guests inside, where an alcove just off the entry hall reveals two secondary bedrooms and a central bath. Further inside lies the kitchen, dining area, and great room, which share one large, open space. The great room enjoys bright views to the rear through large windows, and it warms the atmosphere with its cozy fireplace. The kitchen boasts an island work area, ample counter space, and a roomy walk-in pantry. The dining area accesses the rear through sliding glass doors. The master suite is secluded from the main living areas and enjoys private separation from the secondary bedrooms. The master bath features his-and-her vanities, separated by a linen closet, a compartmented toilet, shower and a walk-in closet with access to the laundry room. The home's 4-car garage is accessed through a utility area which includes a mudroom, complete with bench, lockers.