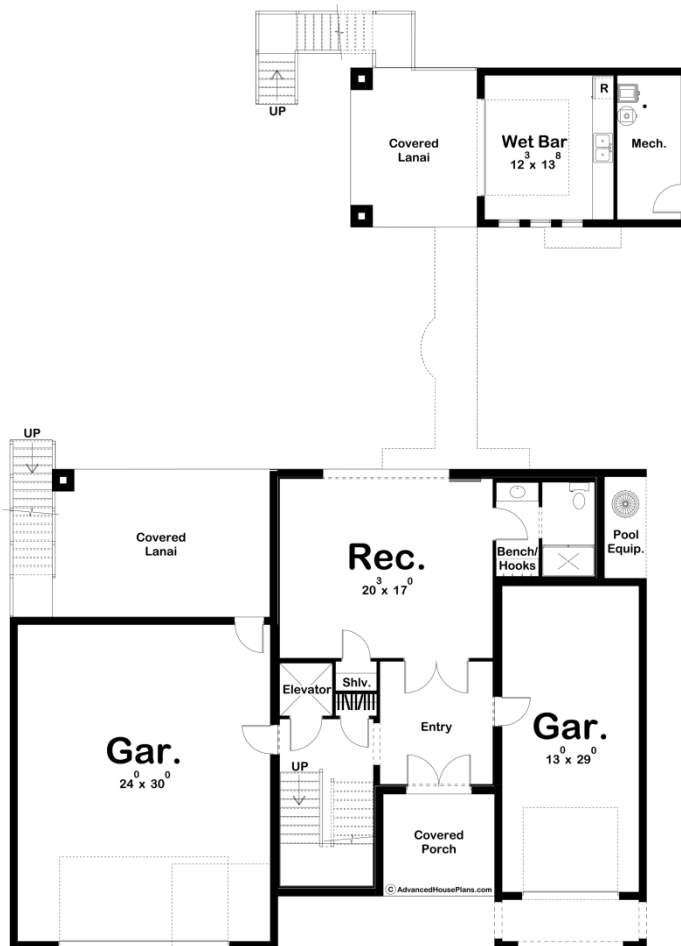
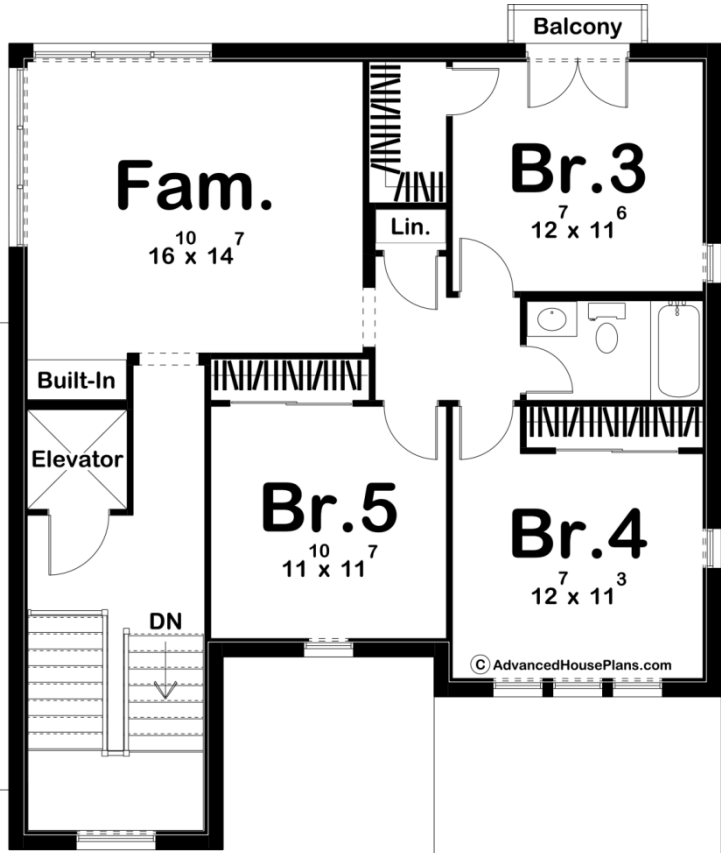
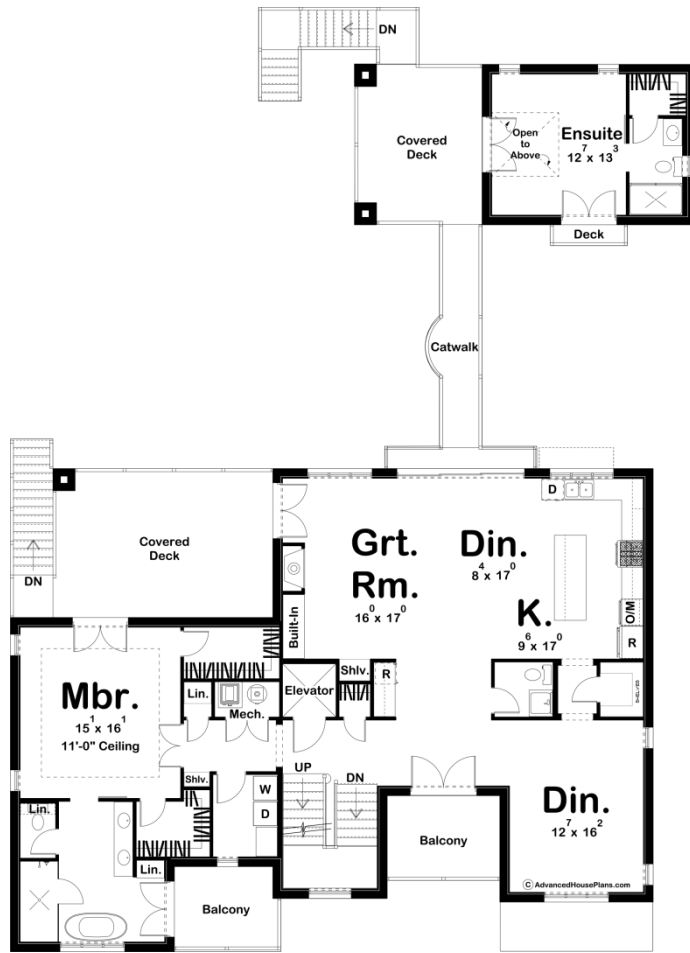




29919 - Bradenton Data Sheet

4376 SQ FT	5 BEDS	4 BATHS	3 BAYS	65' 0" WIDE	84' 0" DEEP
---------------	-----------	------------	-----------	----------------	----------------





Construction Specs

Layout

Bedrooms	5
Bathrooms	4
Garage Bays	3

Square Footage

Main Level	1040 Sq. Ft.
Second Level	2229 Sq. Ft.
Third Level	1107 Sq. Ft.
Covered Area	575 Sq. Ft.
Garage	1232 Sq. Ft.
Total Finished Area	4376 Sq. Ft.

Exterior Dimensions

Width	65' 0"
Depth	84' 0"
Ridge Height <i>Calculated from main floor line</i>	37' 0"

Default Construction Stats

Stats are unique to the individual plan.

Foundation Type	Slab
Exterior Wall Construction	CMU Block
Roof Pitches	4/12 Primary
Main Wall Height	10'
Second Wall Height	10'
Third Wall Height	9'

Plan Description

The Bradenton plan is an amazing 3 Story Beach house plan. A stucco exterior built on a CMU Block foundation makes this the perfect house for your coastal lot. Outside entertainment is a priority on this house including 2 covered lanais, a covered deck, a catwalk, and three balconies. Inside the main level, you'll find a rec area and a bathroom. An elevator or a staircase takes you to the second level. A wet bar and mechanical room can be accessed under the catwalk. The second level includes the primary living areas. The great room is warmed by a fireplace and includes a built-in bookshelf. The kitchen and dining room flow seamlessly in an open layout. The kitchen includes a large island and a walk-in pantry. The master suite is also located on the second level and includes a walk-in closet, his/her vanities, a soaking tub, and a private balcony. The third level includes 3 bedrooms and an additional family room.