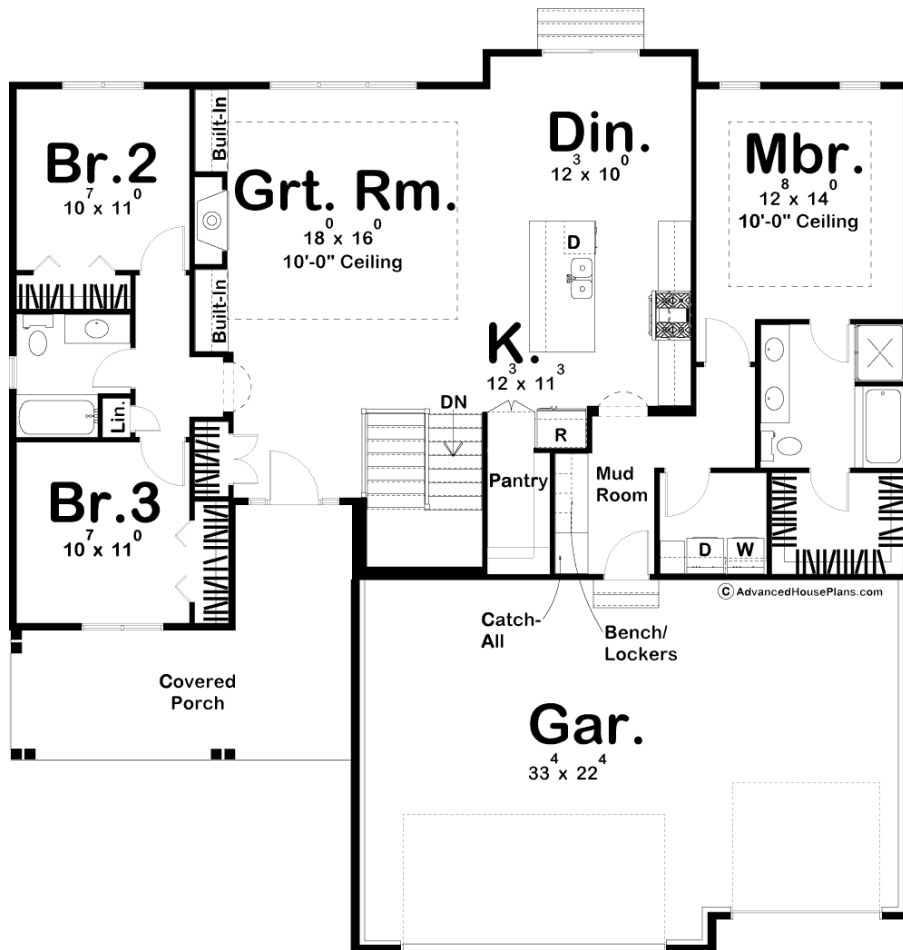




**29393 - Brenna Data Sheet**

1701 SQ FT	3 BEDS	2 BATHS	3 BAYS	55' 0" WIDE	55' 0" DEEP
---------------	-----------	------------	-----------	----------------	----------------



**Construction Specs**

Layout

Bedrooms

Bathrooms	2
Garage Bays	3

### Square Footage

Main Level	1701 Sq. Ft.
Garage	747 Sq. Ft.
Total Finished Area	1701 Sq. Ft.

### Exterior Dimensions

Width	55' 0"
Depth	55' 0"
Ridge Height <i>Calculated from main floor line</i>	23' 0"

### Default Construction Stats

*Stats are unique to the individual plan.*

Foundation Type	Basement
Exterior Wall Construction	2x4
Roof Pitches	8/12 Primary, 10/12, 4/12, 3/12 Secondary
Foundation Wall Height	9'
Main Wall Height	9'

## Plan Description

The Brenna house plan is a Modern Cottage Ranch with a functional floor plan and unique exterior. It combines the eclectic use of cottagecore materials, not too unlike the craftsman style, with elegant modern elements - standing seam metal over the porch, shed dormer and garage roofs, an uncluttered look and feel. Doesn't it look great? Brenna features an open floor plan that feels huge! It's got a deep walk-in pantry, hidden by cabinet-faced doors, and tons of space in the mud room to keep your life, and this beautiful home, organized. The Master Suite is generously sized with a shower and spa tub and spacious walk-in closet. The gazebo featured with this home is our Langdon plan. As always any Advanced House Plans home plan can be customized to fit your needs with our alteration department. Whether you need to add another garage stall, change the front elevation, stretch the home larger or just make the home plan more affordable for your budget we can do that and more for you at Ahp.