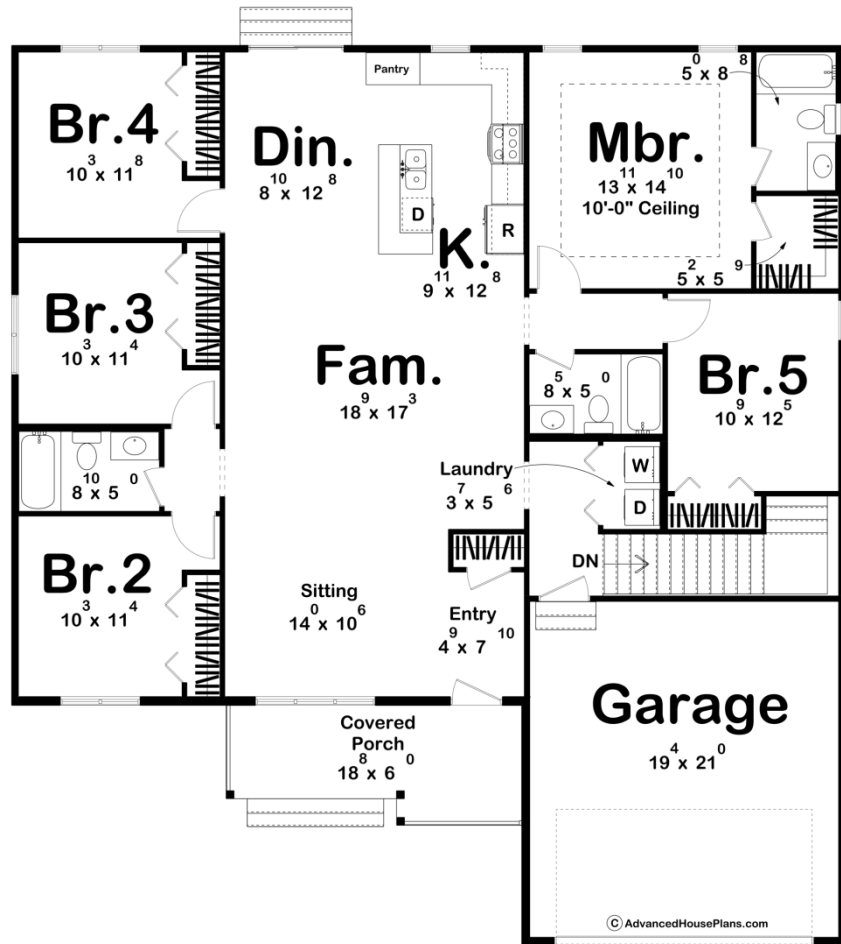
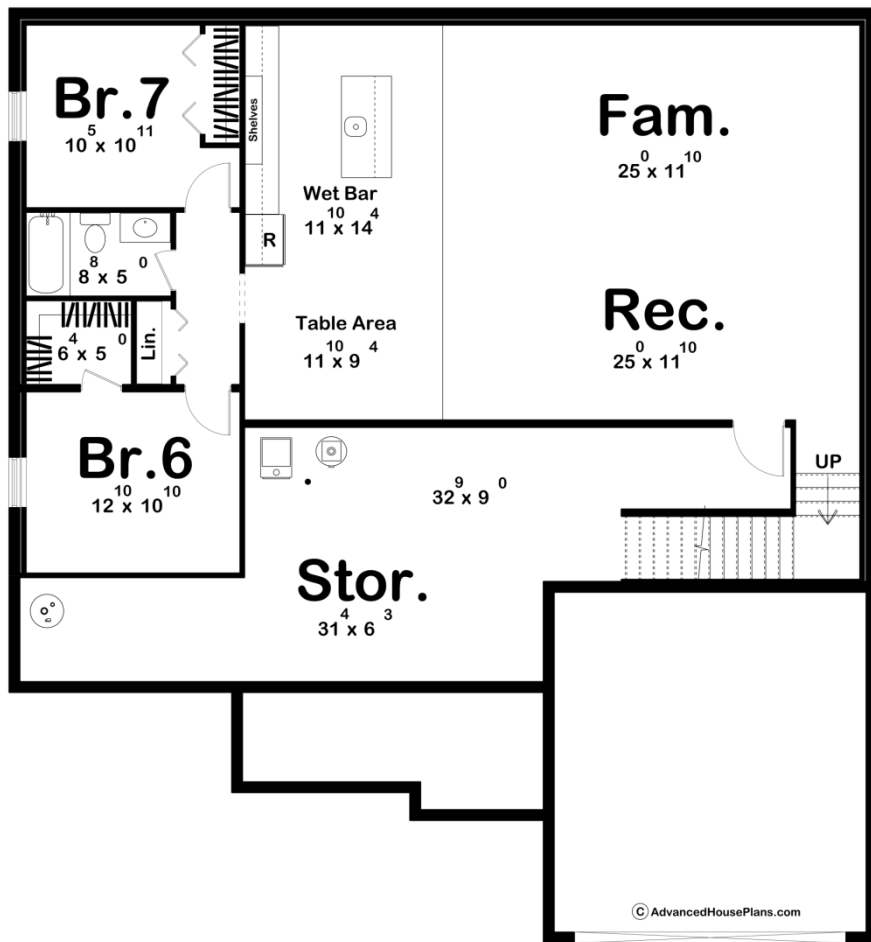




30620 - Broken Rock Data Sheet

2007 SQ FT	5 BEDS	3 BATHS	2 BAYS	52' 0" WIDE	56' 0" DEEP
---------------	-----------	------------	-----------	----------------	----------------





Construction Specs

Layout

Bedrooms	5
Bathrooms	3
Garage Bays	2

Square Footage

Main Level	2007 Sq. Ft.
Covered Area	125 Sq. Ft.
Garage	425 Sq. Ft.
Total Finished Area	2007 Sq. Ft.

Exterior Dimensions

Width	52' 0"
Depth	56' 0"
Ridge Height	21' 3"
<i>Calculated from main floor line</i>	

Default Construction Stats

Stats are unique to the individual plan.

Foundation Type	Basement
Exterior Wall Construction	2x4
Roof Pitches	Primary 6/12
Foundation Wall Height	9'
Main Wall Height	9'

Plan Description

Welcome to the Broken Rock, a spacious one-story traditional-style home with 5 bedrooms and 3 baths. This inviting home features a charming front sitting area near the entry, perfect for relaxing or welcoming guests. The open floor plan flows effortlessly, making it ideal for both family living and entertaining. The covered front porch adds character and curb appeal, while the attached two-car garage provides convenience. For those looking for even more space, an optional finished basement offers endless possibilities, whether for additional living space, a home office, or storage. The Broken Rock is a blend of comfort, style, and functionality, perfect for creating lasting memories. The optional finished basement adds 1372 finished sq ft and 455 unfinished storage sq ft.