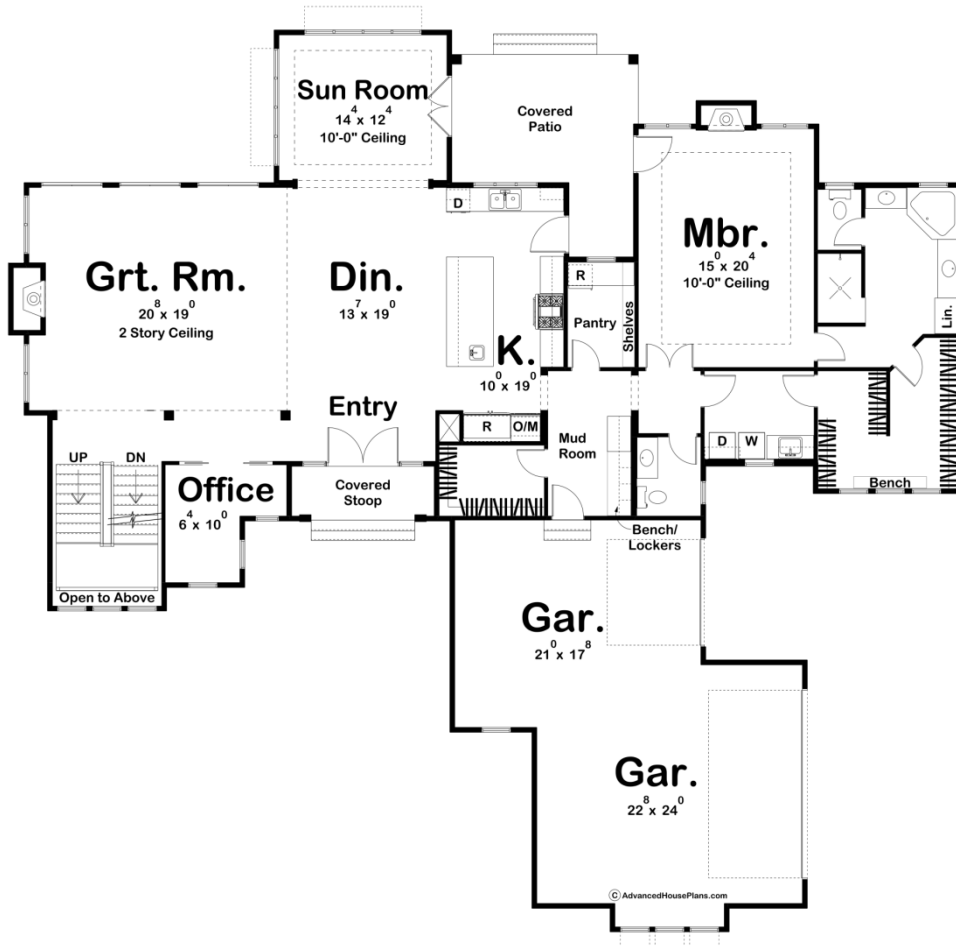
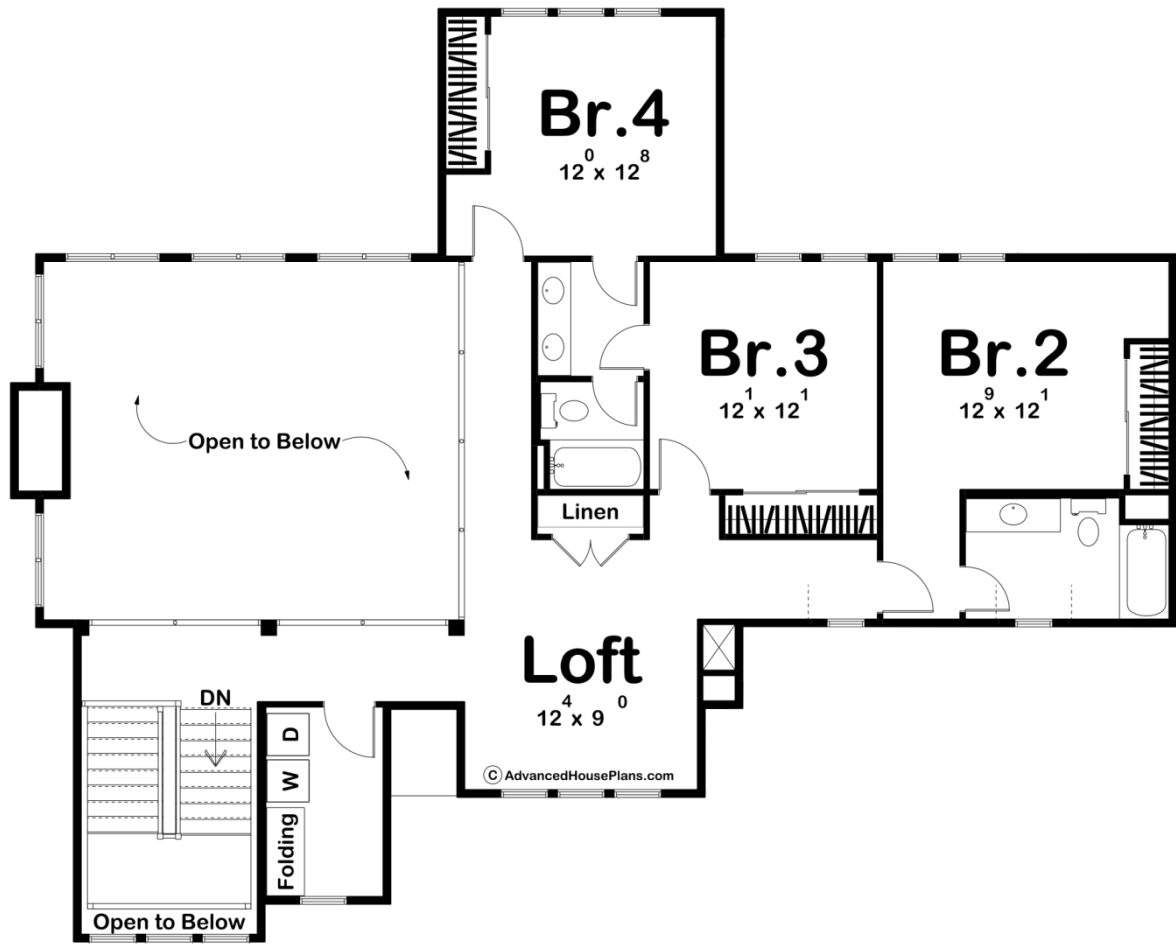




30113 - Brook Hollow Data Sheet

3696 SQ FT	4 BEDS	4 BATHS	3 BAYS	81' 4" WIDE	76' 8" DEEP
---------------	-----------	------------	-----------	----------------	----------------





Construction Specs

Layout

Bedrooms	4
Bathrooms	4
Garage Bays	3

Square Footage

Main Level	2477 Sq. Ft.
Second Level	1219 Sq. Ft.
Covered Area	269 Sq. Ft.
Garage	812 Sq. Ft.
Total Finished Area	3696 Sq. Ft.

Exterior Dimensions

Width	81' 4"
Depth	76' 8"
Ridge Height	33' 0"
<i>Calculated from main floor line</i>	

Default Construction Stats

Stats are unique to the individual plan.

Foundation Type	Basement
Exterior Wall Construction	2x4
Roof Pitches	12/12 Primary, 4/12 8/12 Secondary
Foundation Wall Height	9'
Main Wall Height	10'
Second Wall Height	8'

Plan Description

The Brook Hollow plan has amazing Modern Cottage curb appeal. The exterior combines stucco, contrasting colors, and large windows to create an exciting façade. Just inside the home, you'll be greeted by a wide open floor plan. The 2 story great room is warmed by a fireplace and flows seamlessly with the dining and kitchen. The kitchen features a large island and a walk-in pantry. Tucked behind the kitchen, you'll find the master suite conveniently located on the main floor. The master suite is warmed by its own fireplace and features a bathroom that includes his/her vanities, a soaking tub, and an enclosed toilet. The amazing walk-in closet has access to the main floor laundry room. On the second level, a loft overlooks the great room. Three additional bedrooms can be found on the second level. Bedroom 2 has access to its own bathroom while bedrooms 3 and 4 share a jack and jill bathroom. Back on the main floor, the home's massive 3 car side load garage accesses the home through a convenient mudroom.