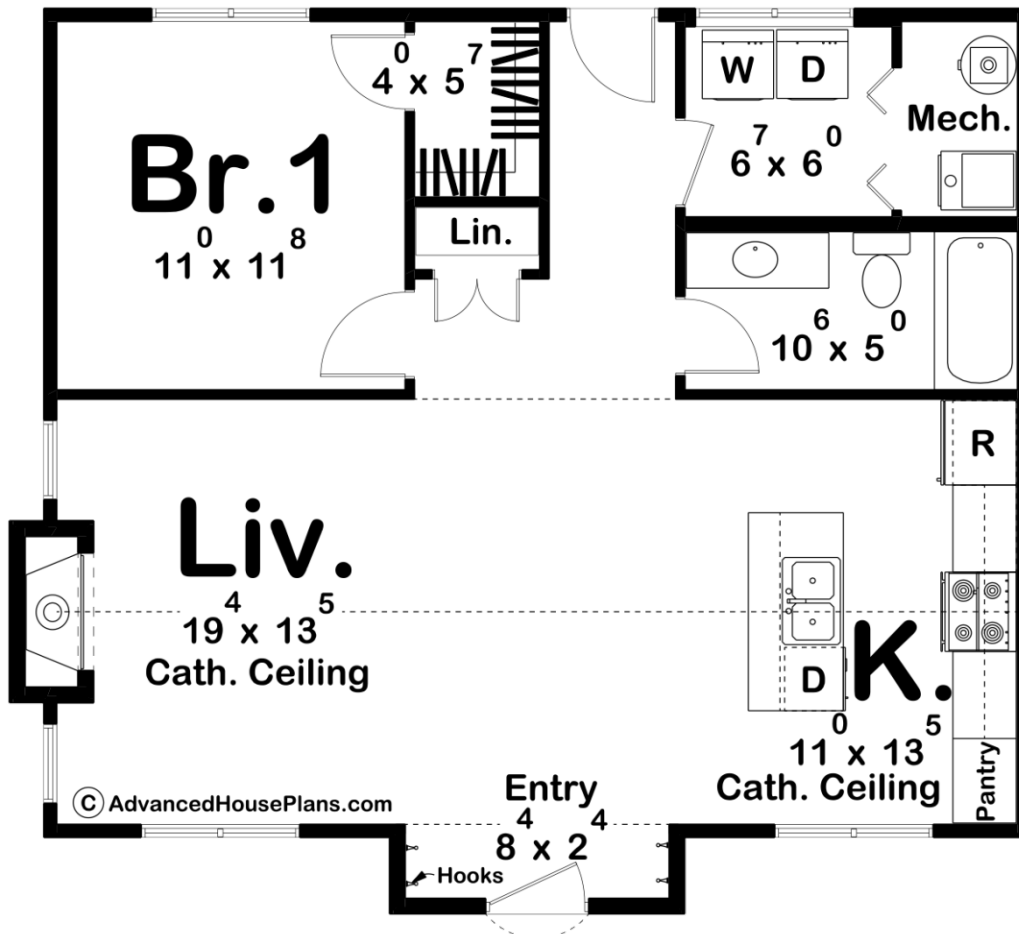




**30543 - Brooklyn Data Sheet**

797 SQ FT	1 BEDS	1 BATHS	0 BAYS	32' 0" WIDE	28' 4" DEEP
--------------	-----------	------------	-----------	----------------	----------------



**Construction Specs**

Layout

Bedrooms

Bathrooms

1

### Square Footage

Main Level

797 Sq. Ft.

Total Finished Area

797 Sq. Ft.

### Exterior Dimensions

Width

32' 0"

Depth

28' 4"

Ridge Height

*Calculated from main floor line*

20' 5"

### Default Construction Stats

*Stats are unique to the individual plan.*

Foundation Type

Slab

Exterior Wall Construction

2x4

Roof Pitches

Primary 10/12, Secondary 14/12

Main Wall Height

9'

## Plan Description

Welcome to your cozy modern cottage-style ADU, a perfect blend of functionality and charm. This thoughtfully designed space features one bedroom, one bathroom, an inviting entry area, and a convenient laundry room. As you step through the front door, you're greeted by a warm and welcoming entry space adorned with hooks for hanging coats, hats, and bags. This area serves as a practical transition zone, allowing you to easily shed the day's belongings before entering the main living area. Adjacent to the living area, you'll find a cozy bedroom that features a walk-in closet. In summary, this modern cottage-style ADU offers everything you need for comfortable and convenient living in a compact footprint. With its thoughtful design, stylish finishes, and functional amenities, it's the perfect place to call home.