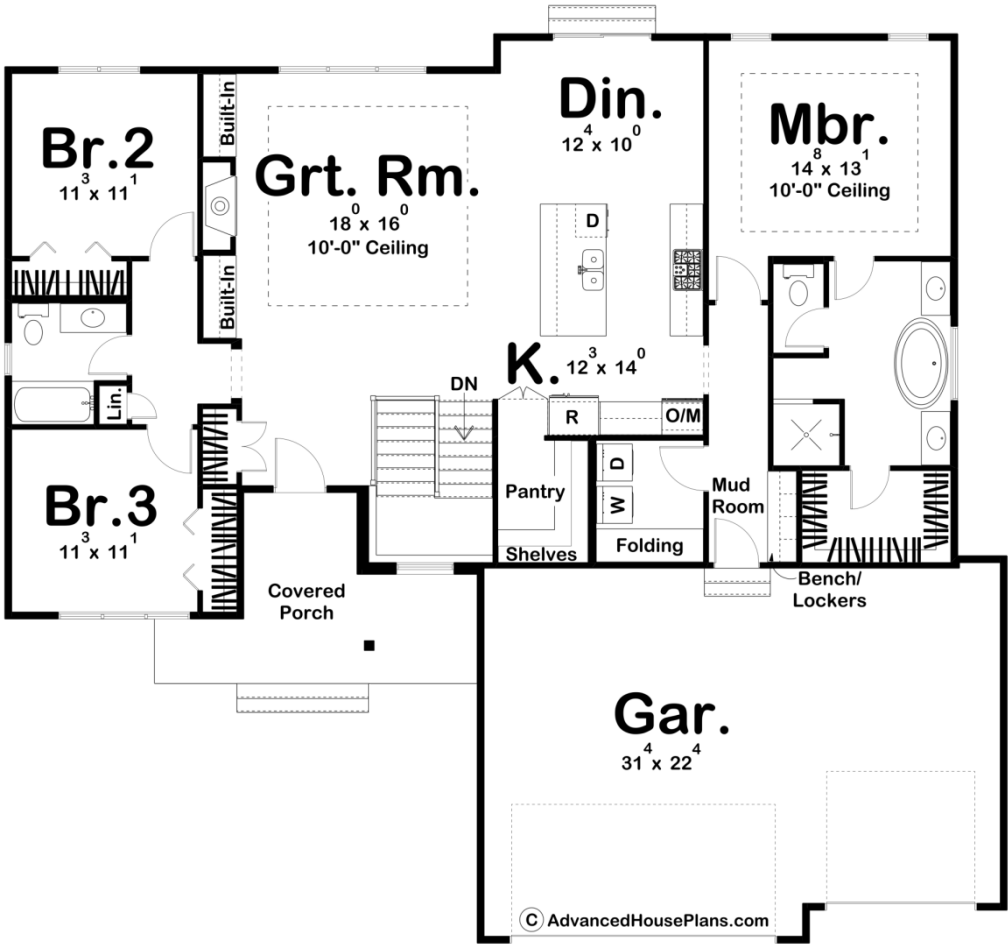




30132 - Caballero Way Data Sheet

| | | | | | |
|---------------|-----------|------------|-----------|----------------|----------------|
| 1824 SQ FT | 3 BEDS | 2 BATHS | 3 BAYS | 60' 8" WIDE | 55' 0" DEEP |
|---------------|-----------|------------|-----------|----------------|----------------|



Construction Specs

| |
|--------|
| Layout |
|--------|

Bedrooms

| | |
|--------------------------------------------------------------------------------------|-----------------------------------|
| Bathrooms | 2 |
| Garage Bays | 3 |
| Square Footage | |
| Main Level | 1824 Sq. Ft. |
| Covered Area | 76 Sq. Ft. |
| Garage | 703 Sq. Ft. |
| Total Finished Area | 1824 Sq. Ft. |
| Exterior Dimensions | |
| Width | 60' 8" |
| Depth | 55' 0" |
| Default Construction Stats <i>Stats are unique to the individual plan.</i> | |
| Foundation Type | Basement |
| Exterior Wall Construction | 2x4 |
| Roof Pitches | 8/12 Primary, 4/12 6/12 Secondary |
| Foundation Wall Height | 9' |
| Main Wall Height | 9' |

Plan Description

Featuring a beautiful modern exterior façade, the Caballero Way is a charming 1 story house plan with a great floor plan to match! The interior features an open floor plan that feels huge! It's got a deep walk-in pantry, hidden by cabinet-faced doors, and tons of space in the mudroom to keep your life, and this beautiful home, organized. The great room is warmed by a fireplace that is flanked by built-in bookshelves. On the right side of the home, the master suite is generously sized with a shower and spa tub and a spacious walk-in closet. On the opposite side of the home, bedrooms 2 and 3 share a centrally located hall bathroom.