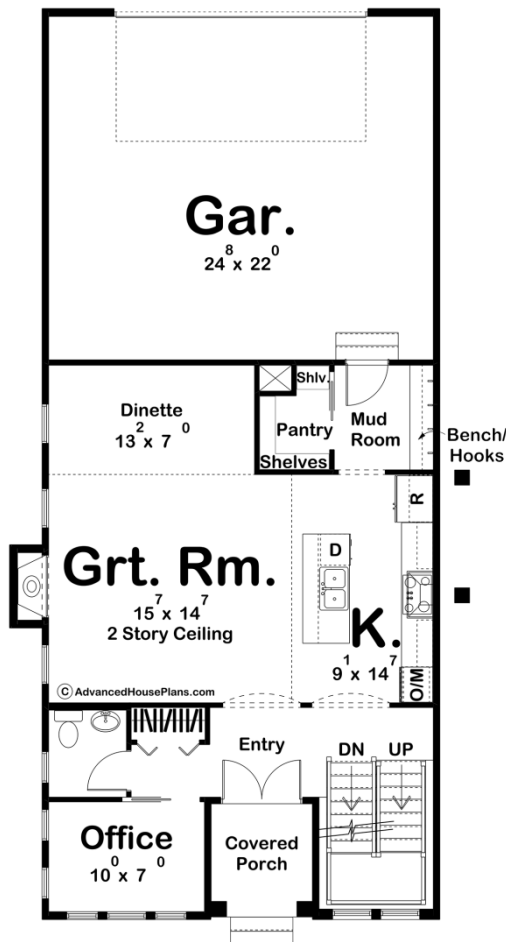
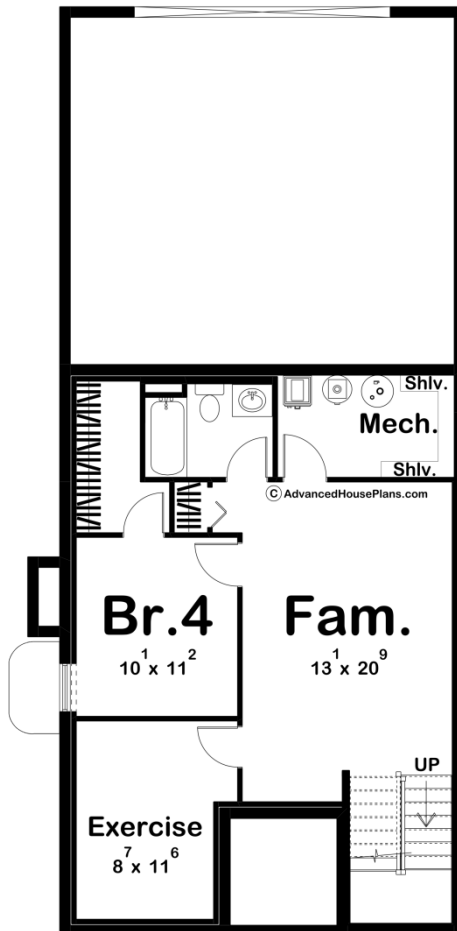
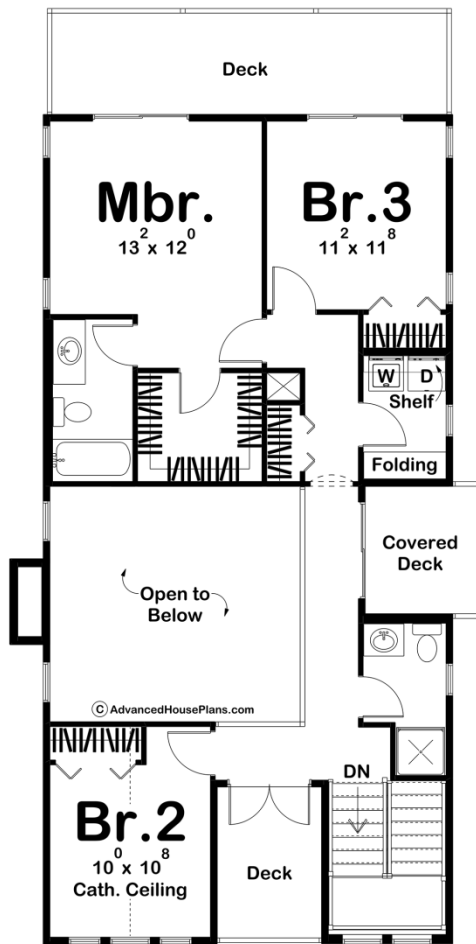




**29941 - Cara Data Sheet**

|               |           |            |           |                |                |
|---------------|-----------|------------|-----------|----------------|----------------|
| 1723<br>SQ FT | 3<br>BEDS | 3<br>BATHS | 2<br>BAYS | 30' 0"<br>WIDE | 58' 0"<br>DEEP |
|---------------|-----------|------------|-----------|----------------|----------------|





Construction Specs

## Layout

|             |   |
|-------------|---|
| Bedrooms    | 3 |
| Bathrooms   | 3 |
| Garage Bays | 2 |

## Square Footage

|                     |              |
|---------------------|--------------|
| Main Level          | 843 Sq. Ft.  |
| Second Level        | 880 Sq. Ft.  |
| Covered Area        | 49 Sq. Ft.   |
| Garage              | 572 Sq. Ft.  |
| Total Finished Area | 1723 Sq. Ft. |

## Exterior Dimensions

|  |        |
|--|--------|
| Width  | 30' 0" |
| Depth  | 58' 0" |
| Ridge Height<br><i>Calculated from main floor line</i> | 27' 0" |

## Default Construction Stats

*Stats are unique to the individual plan.*

|                            |                               |
|----------------------------|-------------------------------|
| Foundation Type            | Basement                      |
| Exterior Wall Construction | 2x4                           |
| Roof Pitches               | 4/12 Primary, 12/12 Secondary |
| Foundation Wall Height     | 9'                            |
| Main Wall Height           | 9'                            |
| Second Wall Height         | 9'                            |

## Plan Description

The Cara plan is an elegant Modern Cottage style house plan. At just under 30' wide, this plan is a great fit for more narrow lots. The exterior of the home showcases stucco with brick and features lots of windows. Just inside the entry, you'll find a wonderful office to the left along with a powder bathroom. The great room, dinette, and kitchen flow seamlessly in an open layout. The great room is warmed by a cozy fireplace. The kitchen includes a large working island with a snack bar and a walk-in pantry. On the second level, you'll find 3 bedrooms. The master suite includes its own bathroom and a large walk-in closet. Bedrooms 2 and 3 share a centrally located hall bathroom. Back on the main level, the home's 2 car rear load garage accesses the home through a mudroom with a bench and coat hooks. An optional finished basement adds 706 sq. ft. and includes a family room, an exercise room, and an additional bedroom with a walk-in closet.