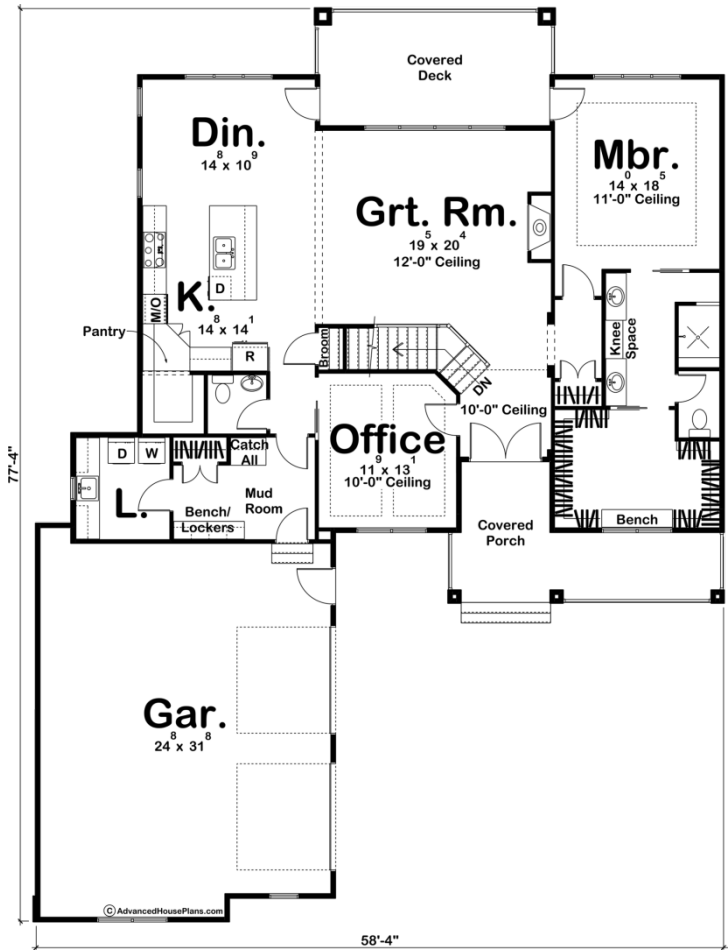




29515 - Carlson Data Sheet

1859 SQ FT	1 BEDS	2 BATHS	2 BAYS	59' 0" WIDE	78' 0" DEEP
---------------	-----------	------------	-----------	----------------	----------------



Construction Specs

Layout

Bedrooms

Bathrooms	2
Garage Bays	2
Square Footage	
Main Level	1859 Sq. Ft.
Garage	798 Sq. Ft.
Total Finished Area	1859 Sq. Ft.
Exterior Dimensions	
Width	59' 0"
Depth	78' 0"
Ridge Height	25' 0"
<i>Calculated from main floor line</i>	
Default Construction Stats	
<i>Stats are unique to the individual plan.</i>	
Foundation Type	Basement
Exterior Wall Construction	2x4
Roof Pitches	10/12 S-S 8/12 F-B
Foundation Wall Height	9'
Main Wall Height	10'

Plan Description

This beautifully configured Traditional Farmhouse plan offers amenities that are usually found in much larger home designs. On the outside, board and batten siding and a covered porch put on a striking display of curb appeal. Just inside, you'll be amazed at the open floorplan including a magnificent Great Room, which is warmed by a fireplace flows into a large kitchen. The kitchen boasts plenty of counter space in addition to the spacious island's work area. Just beyond the dining area, a covered deck extends entertaining options. The master suite accesses the covered deck and enjoys a luxurious bath, complete with compartmented toilet, walk-in shower, dual vanities, and a large walk-in closet. On the other side of this house plan, the large 2 car garage accesses the home through a convenient mudroom complete with a bench, lockers, and a coat closet.