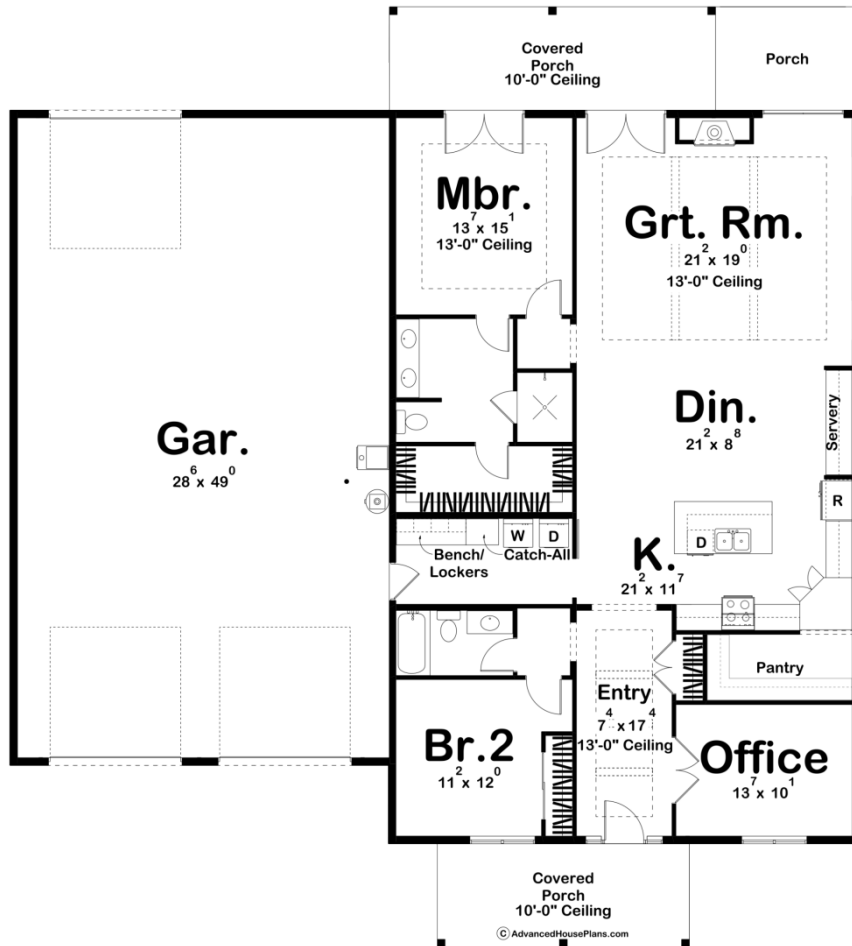




### 30279 - Chamberlain Data Sheet

|               |           |            |           |                |                |
|---------------|-----------|------------|-----------|----------------|----------------|
| 2016<br>SQ FT | 2<br>BEDS | 2<br>BATHS | 3<br>BAYS | 65' 0"<br>WIDE | 72' 0"<br>DEEP |
|---------------|-----------|------------|-----------|----------------|----------------|



### Construction Specs

**Layout**

Bedrooms

|  |                              |
|--|------------------------------|
| Bathrooms  | 2                            |
| Garage Bays  | 3                            |
| <b>Square Footage</b>  |                              |
| Main Level   | 2016 Sq. Ft.                 |
| Covered Area   | 443 Sq. Ft.                  |
| Garage   | 1450 Sq. Ft.                 |
| Total Finished Area  | 2016 Sq. Ft.                 |
| <b>Exterior Dimensions</b>   |                              |
| Width  | 65' 0"                       |
| Depth  | 72' 0"                       |
| Ridge Height<br><i>Calculated from main floor line</i>                               | 21' 10"                      |
| <b>Default Construction Stats</b><br><i>Stats are unique to the individual plan.</i> |                              |
| Foundation Type  | Slab                         |
| Exterior Wall Construction   | 2x6                          |
| Roof Pitches   | Primary 3/12, Secondary 4/12 |
| Main Wall Height   | 12'                          |

## Plan Description

The Chamberlain plan is a modern style barndominium house plan with a beautiful dark exterior and wood accents. It boasts 2016 square feet, 2 bedrooms and 2 bathrooms. A covered 10' ceiling porch brings you into a lengthy 13' tall entryway and an office right off to the side. Heading straight in brings you into a large open concept area, complete with a spacious walk-in pantry, a severy, and kitchen island. The great room provides a tall 13' ceiling with connection to a covered 10' ceiling porch out to the rear of the home. The bedrooms can be found off the main living areas, the master complete with a 13' ceiling, access to the covered porch, a spacious bathroom with double vanities, separate shower and large walk-in closet. Bedroom two shares a hallway bathroom with guests and is right off the mudroom and laundry area that leads out to a large three-car garage and workshop area.