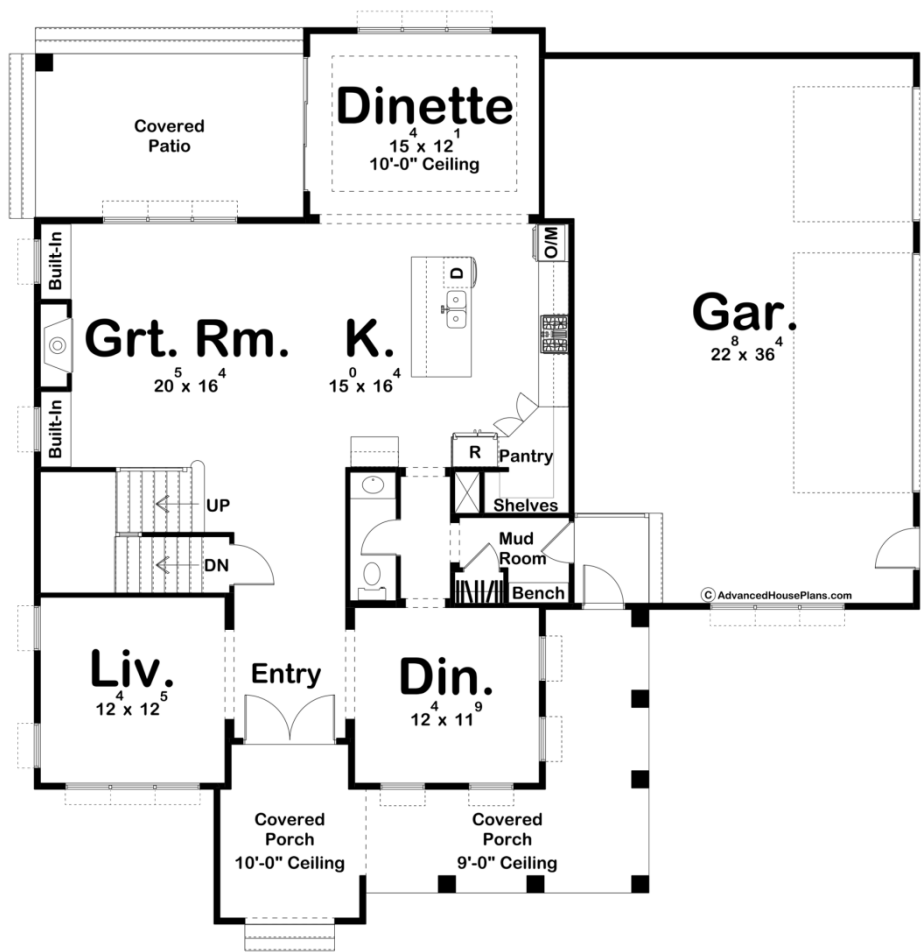
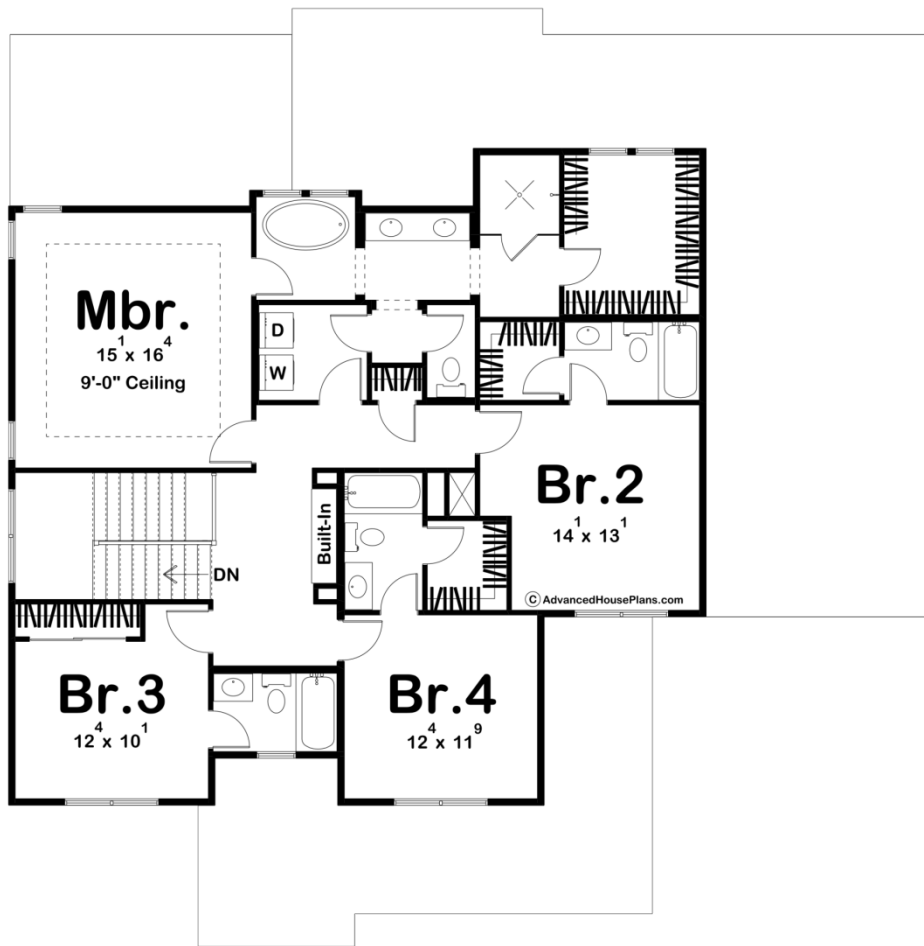




30213 - Chapel Hill Data Sheet

3010 SQ FT	4 BEDS	5 BATHS	3 BAYS	59' 0" WIDE	59' 8" DEEP
---------------	-----------	------------	-----------	----------------	----------------





Construction Specs

Layout

Bedrooms	4
Bathrooms	5
Garage Bays	3

Square Footage

Main Level	1518 Sq. Ft.
Second Level	1492 Sq. Ft.
Covered Area	529 Sq. Ft.
Garage	873 Sq. Ft.
Total Finished Area	3010 Sq. Ft.

Exterior Dimensions

Width	59' 0"
Depth	59' 8"
Ridge Height	28' 6"
<i>Calculated from main floor line</i>	

Default Construction Stats

Stats are unique to the individual plan.

Foundation Type	Basement
Exterior Wall Construction	2x4
Roof Pitches	Primary 10/12, Secondary 6/12, 4/12
Foundation Wall Height	9'
Main Wall Height	10'
Second Wall Height	8'

Plan Description

This modern farmhouse plan is straight out of a magazine. With 3010 square feet, there is plenty of room to make it perfect for any sized family. The gorgeous board and batten exterior with the accents of dark metal and wood really make this home fit the curb appeal of a modern farmhouse, yet keep it intriguing and impossible to keep your eyes off of. Step up to the covered, semi-wrap around porch and be prepared to be in awe as you walk in. The entry has two connections to the dining room and living room, keeping both private for special time with the family. The hallway of the entry way allows for a separate space without stepping straight into a room. Heading in through the three car garage also creates a separate space with a mudroom and powder bath. The great room, kitchen, and dinette all flow seamlessly to create a great space for entertaining. With a breakfast bar, walk-in pantry, and built-in shelves with a fireplace, this whole area is a cozy and lovable spot. Head outside on the additional covered patio after dinner, or head upstairs for a good night's rest. Up here, you can find all the bedrooms, including the master suite as well as three additional bedrooms, each with their own bathroom. The master bedroom has the luxury of a 9 foot ceiling, as well as a private soaking tub, double vanity, separate toilet and shower area, and a massive walk-in closet. All with an attachment to the laundry room for maximum efficiency.