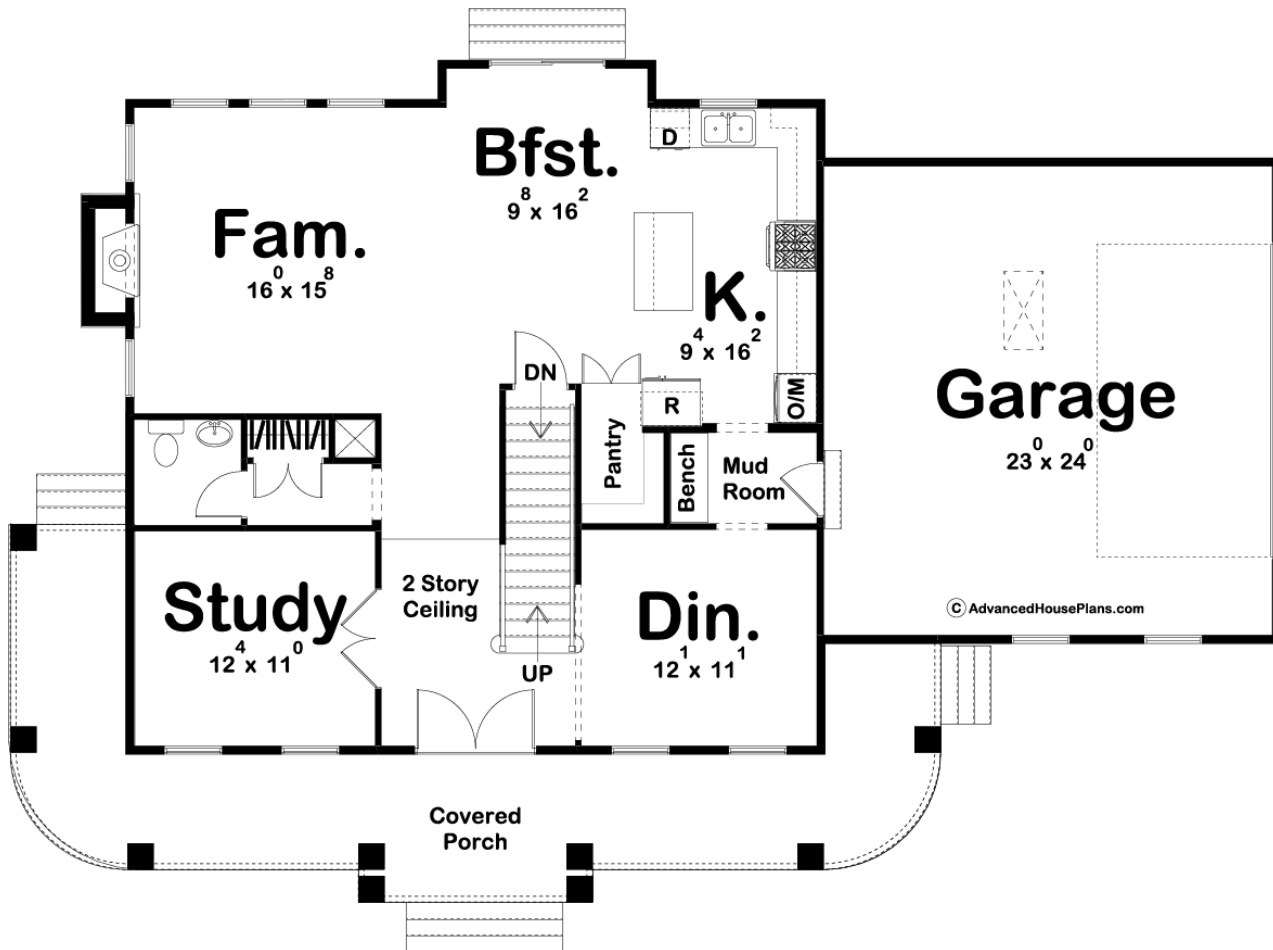
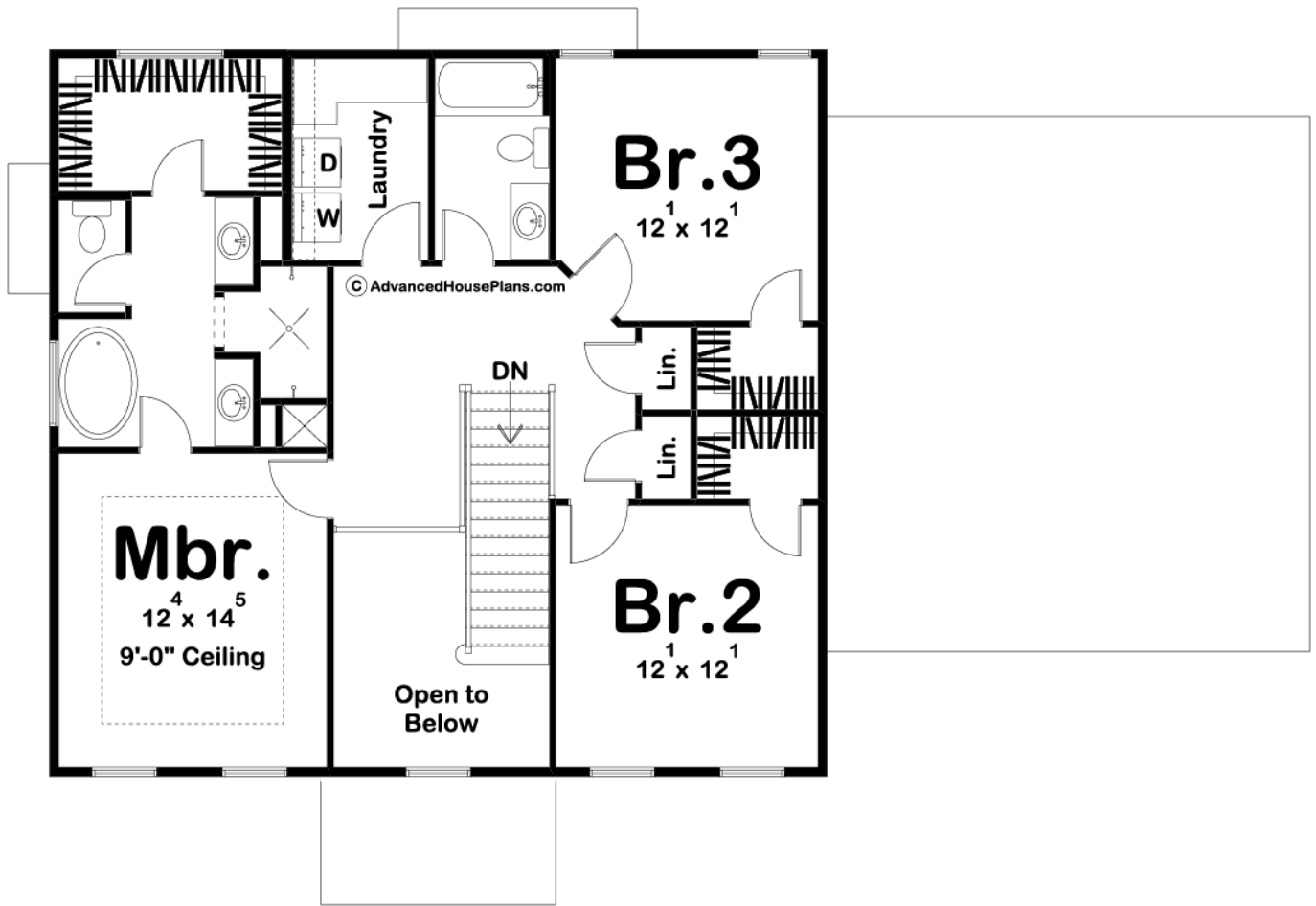




**29807 - Charleston Data Sheet**

2267 SQ FT	3 BEDS	3 BATHS	2 BAYS	65' 8" WIDE	43' 0" DEEP
---------------	-----------	------------	-----------	----------------	----------------





## Construction Specs

### Layout

Bedrooms	3
Bathrooms	3
Garage Bays	2

### Square Footage

Main Level	1211 Sq. Ft.
Second Level	1056 Sq. Ft.
Garage	576 Sq. Ft.
Total Finished Area	2267 Sq. Ft.

### Exterior Dimensions

Width	65' 8"
Depth	43' 0"
Ridge Height	28' 0"
<i>Calculated from main floor line</i>	

## Default Construction Stats

*Stats are unique to the individual plan.*

Foundation Type	Basement
Exterior Wall Construction	2x4
Roof Pitches	6/12 Primary, 8/12 & 3/12 Secondary
Foundation Wall Height	9'
Main Wall Height	9'
Second Wall Height	9'

## Plan Description

The Charleston house will blow you away with its southern charm. The exterior is where the charm starts with its trio of gables and a large front covered porch. As you enter the home you will be greeted by a stunning 2 story entry. To the right of the entry, you will find a formal dining room. On the other side of the entry, you will find a wonderful study. Farther into the home, the family room is warmed by a fireplace. The large kitchen includes a walk-in pantry and a large island. A breakfast nook accesses the rear of the home. Upstairs you will find the bedrooms. The massive master suite includes his/her vanities, a soaking tub, a walk-in shower with dual shower heads, an enclosed toilet, and a walk-in closet. Bedrooms 2 and 3 share a centrally located hall bathroom. Back on the main floor, the home's 2 car side load garage accesses the home through a convenient mudroom with a bench and lockers.