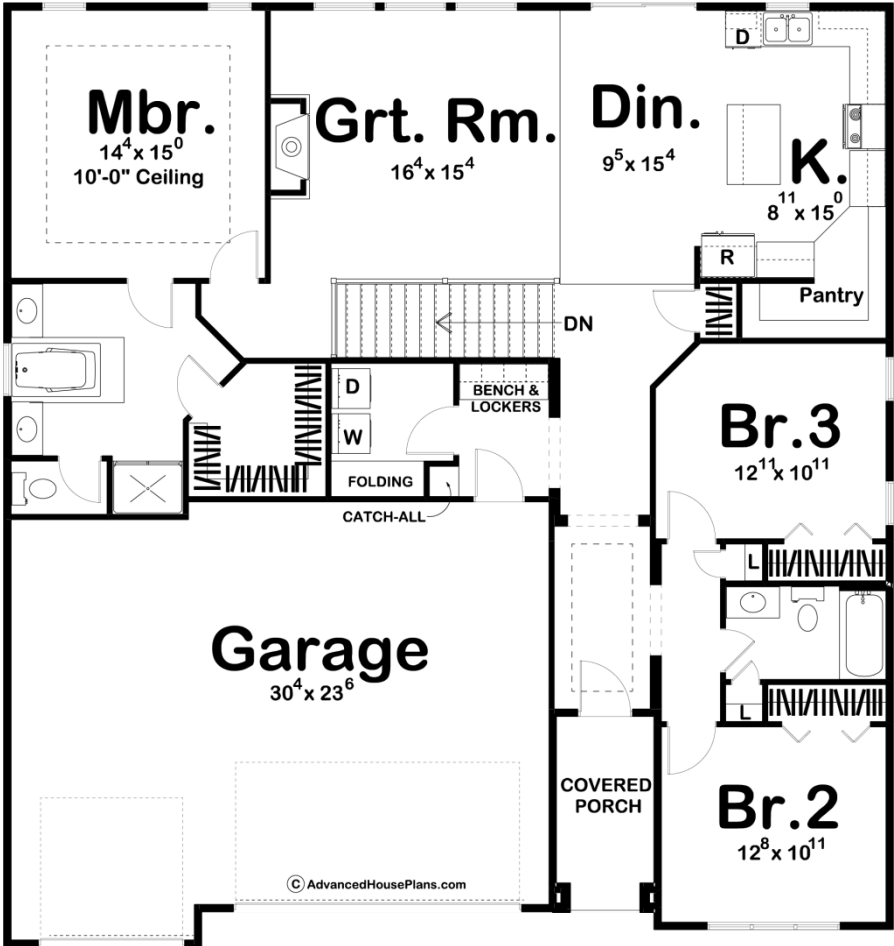




© WWW.ADVANCEDHOUSEPLANS.COM

29680 - Charlotte Rose Data Sheet

1804 SQ FT	3 BEDS	2 BATHS	3 BAYS	50' 0" WIDE	53' 0" DEEP
---------------	-----------	------------	-----------	----------------	----------------



Construction Specs

Layout

Bedrooms

Bathrooms	2
-----------	---

Garage Bays	3
-------------	---

Square Footage

Main Level	1804 Sq. Ft.
------------	--------------

Garage	720 Sq. Ft.
--------	-------------

Total Finished Area	1804 Sq. Ft.
---------------------	--------------

Exterior Dimensions

Width	50' 0"
-------	--------

Depth	53' 0"
-------	--------

Default Construction Stats

Stats are unique to the individual plan.

Foundation Type	Basement
-----------------	----------

Exterior Wall Construction	2x4
----------------------------	-----

Roof Pitches	7/12 Primary, 10/12 Secondary
--------------	-------------------------------

Foundation Wall Height	9'
------------------------	----

Main Wall Height	9'
------------------	----

Plan Description

Charming Modern Farmhouse details on the outside, coupled with efficiently designed spaces inside, make this 1804 sq. ft, 1-story house plan an attractive choice for those seeking a home design under 1,900 sq. ft. A deep covered front porch leads guests inside, where an alcove just off the entry hall reveals two secondary bedrooms and a central bath. Further inside lies the kitchen, dining area and great room, which share one large, open space. The great room enjoys bright views to the rear through three large windows, and it warms the atmosphere with its cozy fireplace. The kitchen boasts an island work area, ample counter space, and a roomy walk-in pantry. The dining area accesses the rear through sliding glass doors. The master suite is secluded from the main living areas and enjoys private separation from the secondary bedrooms. The master bath features his-and-her vanities, separated by a soaking tub, a compartmented toilet, shower and a walk-in closet. The home's 3-car garage is accessed through a utility area which includes a laundry room and a mudroom, complete with bench, lockers and a handy catch-all area.