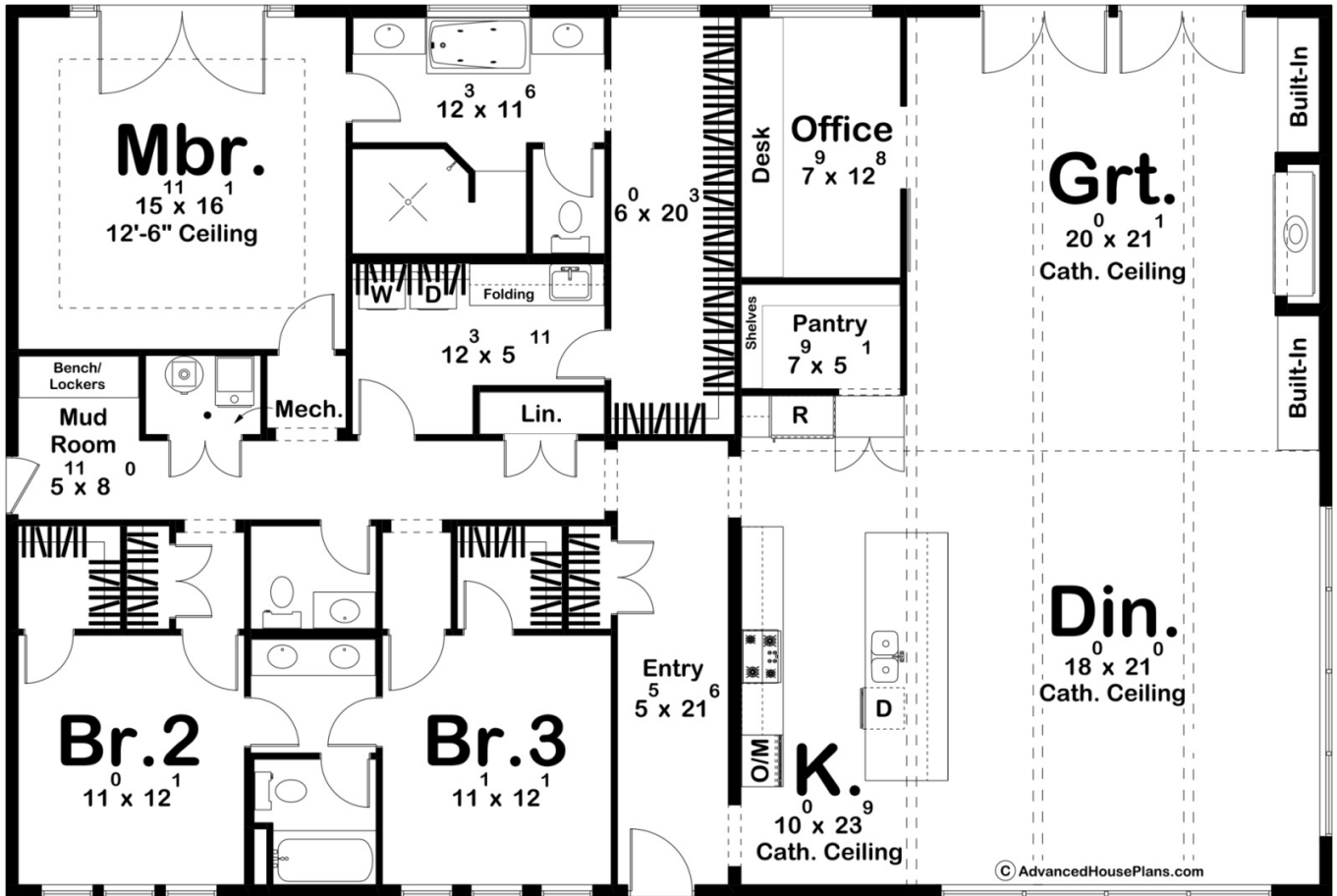




30326 - Coal Creek Data Sheet

| | | | | | |
|---------------|-----------|------------|-----------|----------------|----------------|
| 2731 SQ FT | 3 BEDS | 3 BATHS | 0 BAYS | 64' 0" WIDE | 43' 0" DEEP |
|---------------|-----------|------------|-----------|----------------|----------------|



Construction Specs

Layout

Bedrooms

Square Footage

| | |
|---------------------|--------------|
| Main Level | 2731 Sq. Ft. |
| Total Finished Area | 2731 Sq. Ft. |

Exterior Dimensions

| | |
|--|--------|
| Width | 64' 0" |
| Depth | 43' 0" |
| Ridge Height <i>Calculated from main floor line</i> | 19' 4" |

Default Construction Stats

Stats are unique to the individual plan.

| | |
|----------------------------|--------------|
| Foundation Type | Slab |
| Exterior Wall Construction | 2x6 |
| Roof Pitches | 4/12 Primary |
| Main Wall Height | 12' |

Plan Description

Introducing the charming and functional 1-story barndominium house plan! This rectangular design is perfect for those seeking a spacious and modern living space without the need for a garage. With its thoughtfully laid out interior, this home boasts 3 bedrooms, 3 bathrooms, an office, and a host of appealing features. Upon entering, you'll be welcomed into an open and airy atmosphere as the kitchen, dining area, and great room seamlessly flow into one another. This open concept design allows for easy interaction and entertaining among family and friends. The kitchen is well-appointed and features modern appliances, ample counter space, and a convenient walk-in pantry, providing both functionality and style. The dining room steals the spotlight with its large windows, allowing natural light to flood the space and providing picturesque views of the surrounding scenery. Whether it's a casual family dinner or a lively gathering, this space is sure to be a favorite spot for meals and socializing. Nestled within the heart of this house plan is a breathtaking great room that exudes warmth and elegance. The highlight of this space is the soaring cathedral ceiling, which adds a touch of grandeur and creates an open and airy ambiance. Natural light pours in through the french doors, further enhancing the room's spaciousness and creating a seamless connection to the outdoors. To add to the inviting atmosphere, a stunning built-in fireplace takes center stage, serving as a focal point and providing both warmth and comfort during cooler evenings. The fireplace is surrounded by tastefully crafted cabinets, offering storage options for displaying cherished mementos, books, or other decorative items. These cabinets not only add functionality but also contribute to the overall aesthetic appeal of the great room, creating a cozy and inviting gathering space for family and friends. The master suite is a peaceful retreat, complete with a private bathroom that connects to a spacious walk-in closet. This layout offers privacy and convenience, allowing you to prepare for the day with ease. Additionally, the master closet provides direct access to the laundry room, making chores a breeze and streamlining your daily routine. Each of the remaining two bedrooms also comes with its own walk-in closet, ensuring ample storage space for personal belongings. These rooms can be used as additional bedrooms, guest rooms, or even as flex spaces to accommodate your unique needs. Overall, this 1-story barndominium house plan is designed with both practicality and aesthetics in mind. Its open living area, well-equipped kitchen, abundant storage options, and inviting

dining room with large windows make it a delightful home for comfortable living and entertaining.