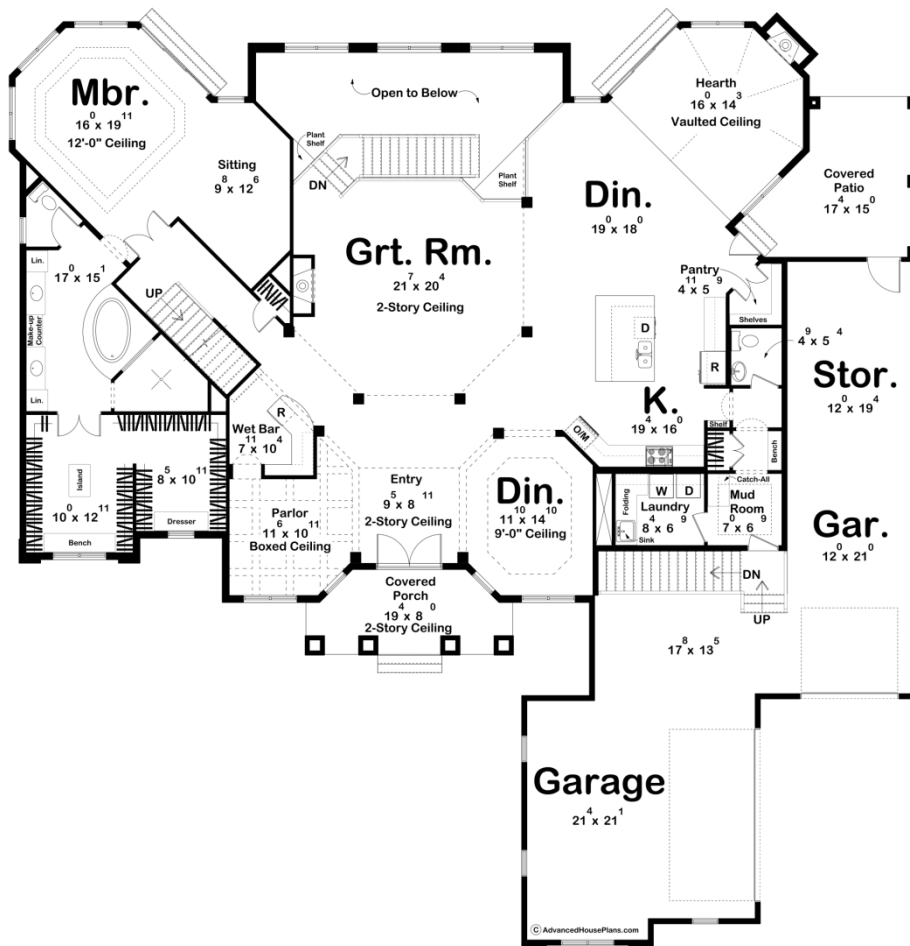
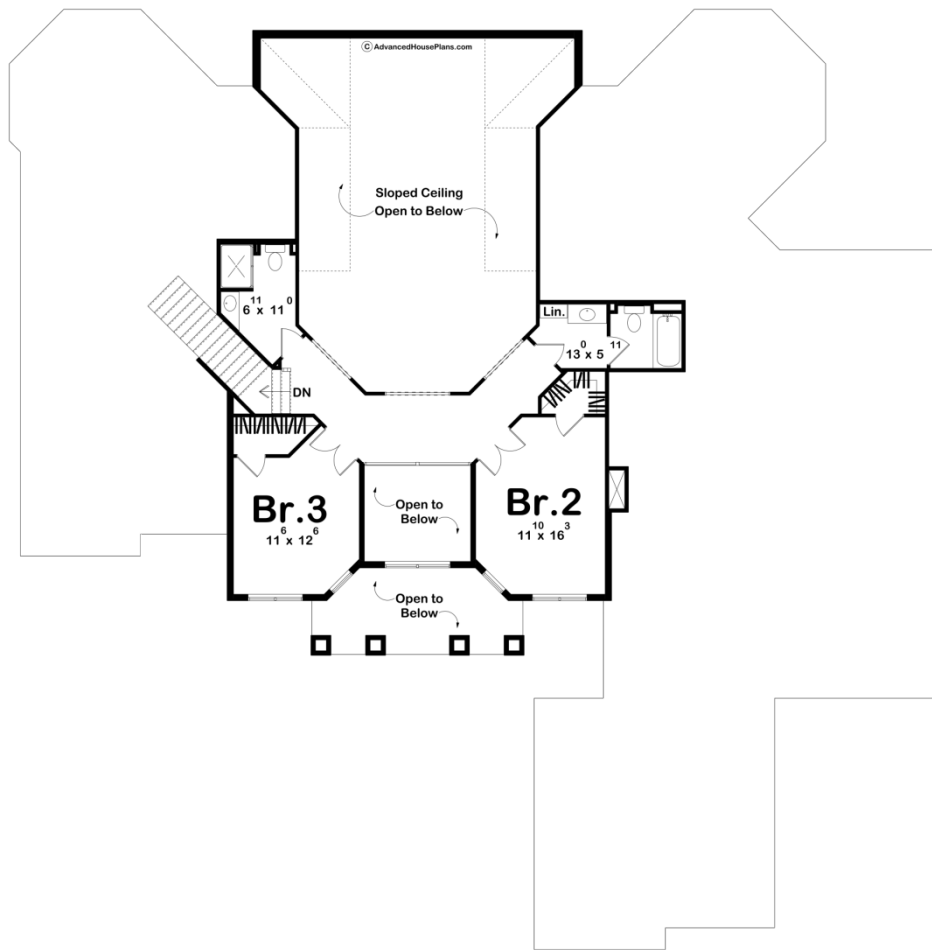




29159 - Collamore Data Sheet

3992 SQ FT	3 BEDS	4 BATHS	3 BAYS	85' 0" WIDE	86' 0" DEEP
---------------	-----------	------------	-----------	----------------	----------------





Construction Specs

Layout

Bedrooms	3
Bathrooms	4
Garage Bays	3

Square Footage

Main Level	3245 Sq. Ft.
Second Level	747 Sq. Ft.
Garage	1216 Sq. Ft.
Total Finished Area	3992 Sq. Ft.

Exterior Dimensions

Width	85' 0"
Depth	86' 0"
Ridge Height	31' 0"
<i>Calculated from main floor line</i>	

Default Construction Stats

Stats are unique to the individual plan.

Foundation Type	Basement
Exterior Wall Construction	2x4
Roof Pitches	8/12
Foundation Wall Height	9'
Main Wall Height	10'
Second Wall Height	8'

Plan Description

Soaring columns, accented by elegant arches, create a stunning centerpiece for the front of this grand 1-1/2 story house plan. Designed for unforgettable entertaining, the interior aspects are impressive, as guests are greeted with immediate views of a 2-story-high great room, set within an array of arched openings.

To the rear of the great room, a 3-story-high atrium is brightened by a soaring wall of windows. The 2-story-high entry hall is flanked by a formal dining room and a parlor with adjacent bar. To the side of the great room, the breakfast area, kitchen, and bayed hearth room interact openly. This area accesses a rear deck that is partially covered to facilitate outdoor dining, rain or shine. The kitchen offers plenty of counter space in addition to an island workspace/breakfast bar and a walk-in pantry. Just off the kitchen, a utility area includes a sizeable laundry room with counter and soaking sink, a powder bath and a coat closet with adjacent bench. This area accesses the 4-car garage area, which features one 2-car, side-by-side garage, and one 2-car tandem garage. The tandem garage accesses the rear covered deck and a secondary set of stairs leads from the garage area to the basement. On the opposite side of the home, the master suite lies quietly behind a set of double doors. The bedroom, with a 12-foot-high ceiling, includes a large sitting area and access to a private deck. The bath area abounds in luxurious amenities, which include his and her vanities, an opulent oval soaking tub, spacious walk-in shower, compartmented toilet and an expansive walk-in closet with built-in dresser and bench. On the second level, bedrooms 2 and 3 each have walk-in closets and enjoy their own baths. Arched openings provide breathtaking views to the entry hall and great room below.