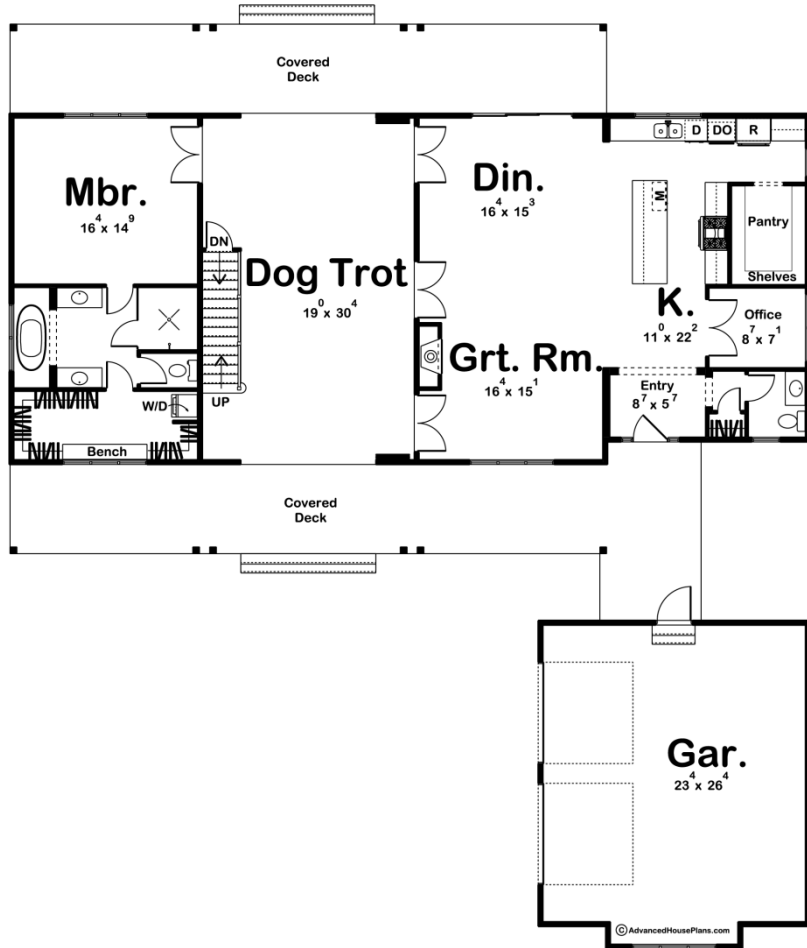




30183 - Cookeville Data Sheet

3379 SQ FT	5 BEDS	4 BATHS	2 BAYS	71' 0" WIDE	82' 0" DEEP
---------------	-----------	------------	-----------	----------------	----------------





Construction Specs

Layout

Bedrooms	5
Bathrooms	4
Garage Bays	2

Square Footage

Main Level	2165 Sq. Ft.
Second Level	1214 Sq. Ft.
Garage	672 Sq. Ft.
Total Finished Area	3379 Sq. Ft.

Exterior Dimensions

Width	71' 0"
Depth	82' 0"
Ridge Height	30' 0"
<i>Calculated from main floor line</i>	

Default Construction Stats

Stats are unique to the individual plan.

Foundation Type	Basement
Exterior Wall Construction	2x6
Roof Pitches	8/12 Primary, 4/12 Secondary
Foundation Wall Height	9'
Main Wall Height	9'
Second Wall Height	8'

Plan Description

The Cookeville plan is a beautiful 1.5 Story Modern Farmhouse plan. The exterior features board and batten siding and a courtyard garage. A mixture of textures including wood garage doors and accents, white siding, and metal roofing provides the home with the modern farmhouse look. This home features a wonderful dogtrot area that separates the main living area from the master suite. The dogtrot area opens up on both ends and makes a great gathering spot for gatherings. On the right side of the home, the great room, kitchen, and dining room are arranged in an open layout. The great room is warmed by a fireplace and allows in ample natural light through its French doors. The kitchen includes a large walk-in pantry and a massive island with a snack bar. A pocket office is located just off the kitchen. The master suite includes his/her vanities, a soaking tub, a walk-in shower, and a huge walk-in closet with laundry hookups. The second floor features 4 additional bedrooms. Bedrooms 2 and 3 share a Jack and Jill bathroom as does bedrooms 4 and 5. Each bedroom has its own walk-in closet.