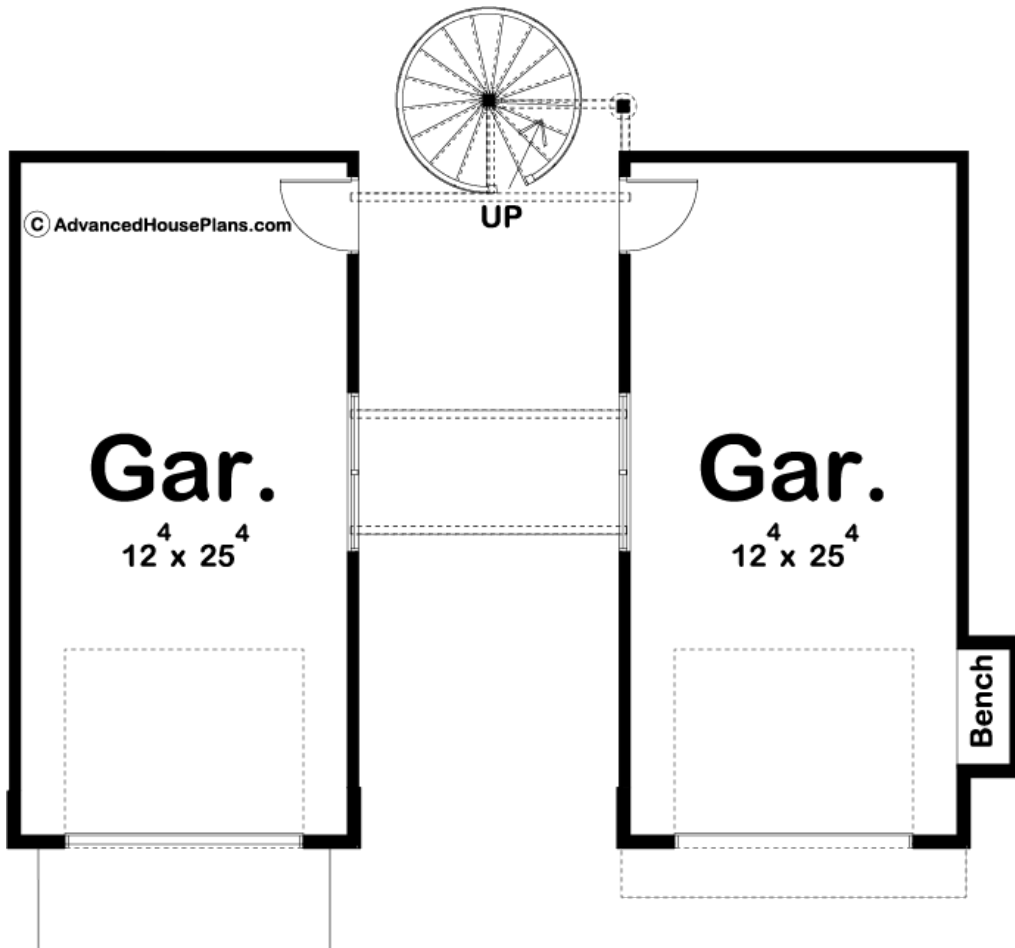
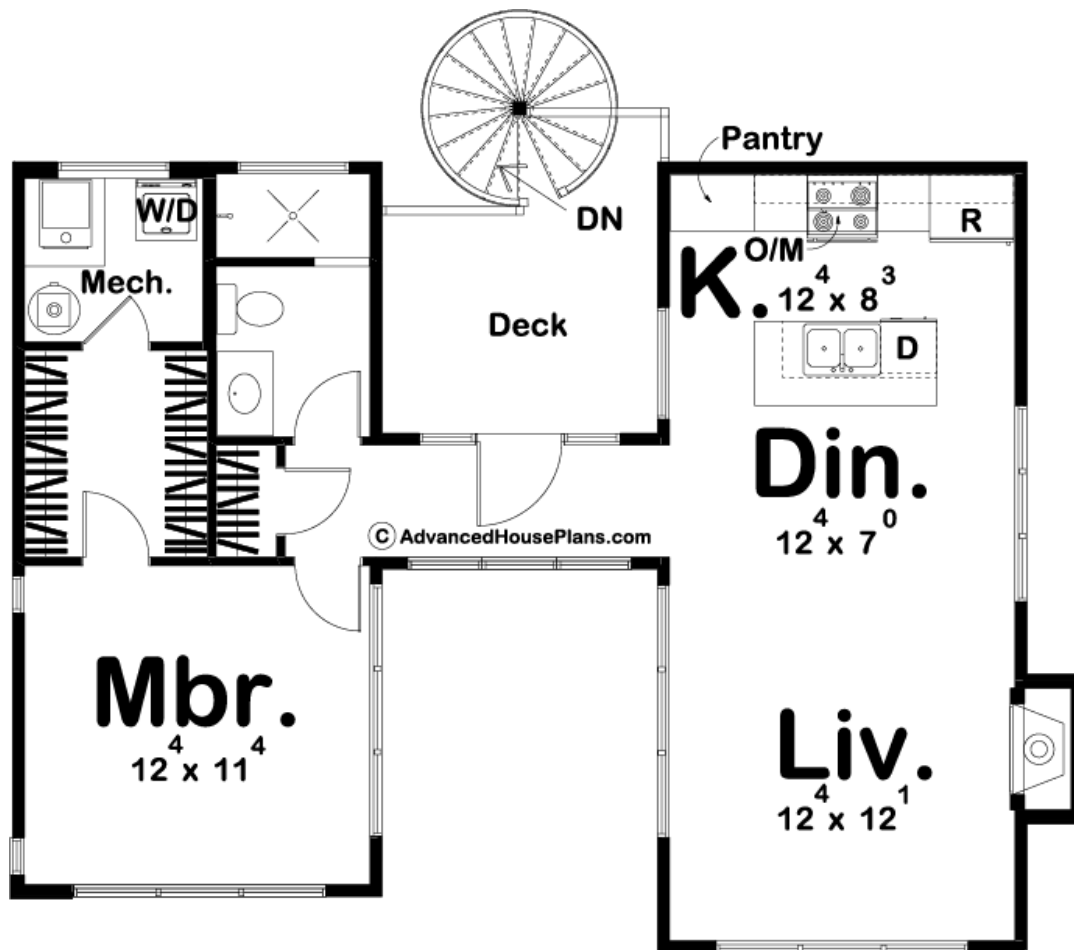




29748 - Cordell Data Sheet

|              |           |            |           |                |                |
|--------------|-----------|------------|-----------|----------------|----------------|
| 761<br>SQ FT | 1<br>BEDS | 1<br>BATHS | 2<br>BAYS | 38' 0"<br>WIDE | 28' 0"<br>DEEP |
|--------------|-----------|------------|-----------|----------------|----------------|





## Construction Specs

### Layout

|             |   |
|-------------|---|
| Bedrooms    | 1 |
| Bathrooms   | 1 |
| Garage Bays | 2 |

### Square Footage

|                     |             |
|---------------------|-------------|
| Main Level          | 761 Sq. Ft. |
| Garage              | 686 Sq. Ft. |
| Total Finished Area | 761 Sq. Ft. |

### Exterior Dimensions

|       |        |
|-------|--------|
| Width | 38' 0" |
| Depth | 28' 0" |

### Default Construction Stats

*Stats are unique to the individual plan.*

|                            |      |
|----------------------------|------|
| Foundation Type            | Slab |
| Exterior Wall Construction | 2x4  |

|                    |                              |
|--------------------|------------------------------|
| Roof Pitches       | 1/12 Primary, 2/12 Secondary |
| Main Wall Height   | 9'                           |
| Second Wall Height | 9'                           |

## Plan Description

This Modern style apartment garage is perfect for those who want a unique but practical floor plan. On the main level, you have 2 separate 1 car garages. Just up the charming spiral staircase, you will find a great practical apartment. The sleeping quarters are separated from the main living area by a breezeway for privacy. On one side, you'll find a living room that is warmed by a fireplace and a kitchen the includes an island with a flush snack bar. On the opposite side, you'll find the master suite that includes a walk-in closet and a laundry room.