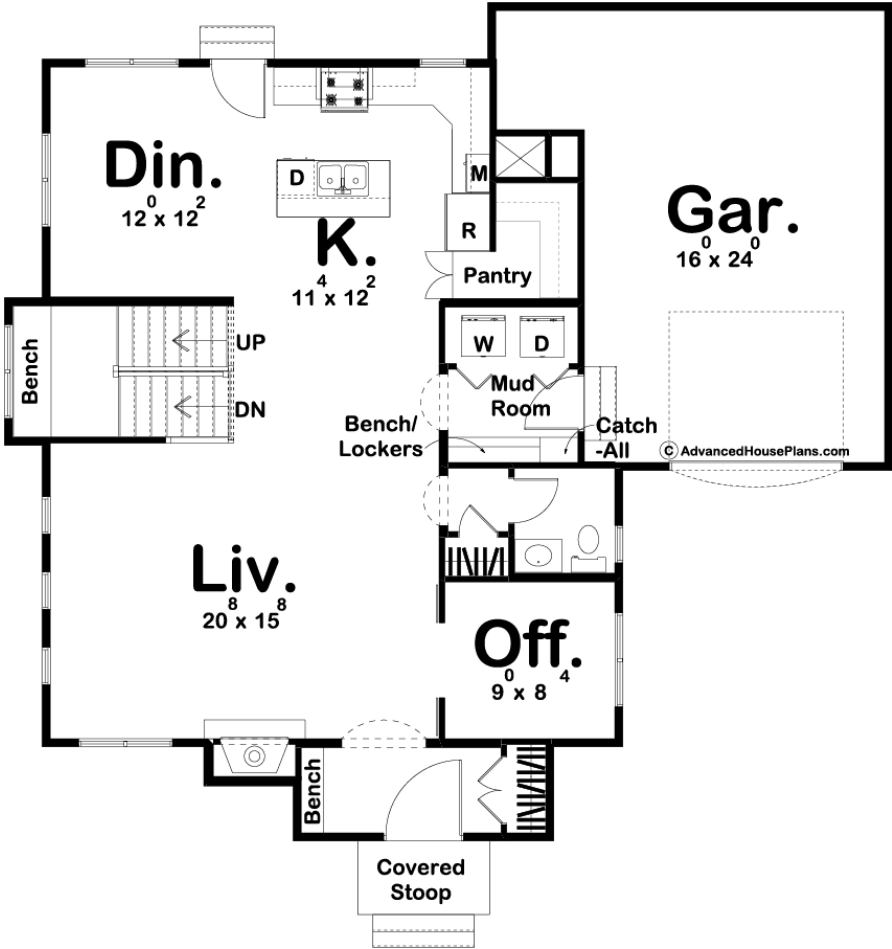
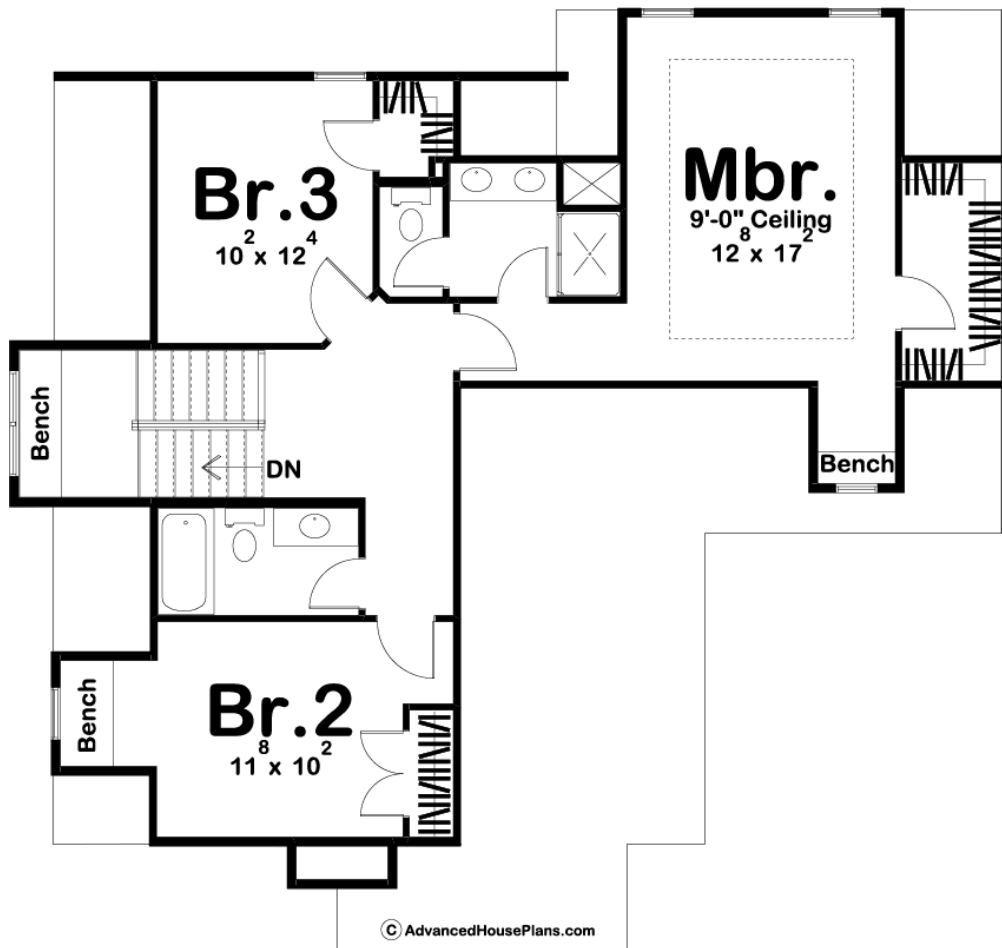




29753 - Crown Point Data Sheet

2031 SQ FT	3 BEDS	3 BATHS	1 BAYS	47' 0" WIDE	45' 0" DEEP
---------------	-----------	------------	-----------	----------------	----------------





## Construction Specs

### Layout

Bedrooms	3
Bathrooms	3
Garage Bays	1

### Square Footage

Main Level	1125 Sq. Ft.
Second Level	906 Sq. Ft.
Garage	435 Sq. Ft.
Total Finished Area	2031 Sq. Ft.

### Exterior Dimensions

Width	47' 0"
Depth	45' 0"

### Default Construction Stats

*Stats are unique to the individual plan.*

Foundation Type	Basement
-----------------	----------

Exterior Wall Construction	2x4
Roof Pitches	16/12 Primary, 4/12 Secondary
Foundation Wall Height	9'
Main Wall Height	9'
Second Wall Height	8'

## Plan Description

The Crown Point plan is a charming Cottage style plan that takes you back to a time when houses were built with uniqueness and character. The high pitched roof and stucco give this plan an old-world look with modern amenities. As you step into the home, you'll find yourself in an excellent entryway that includes a coat closet and a bench. Just off the entryway is a convenient office that is a great place to get some work done at home. The living room is warmed by a fireplace and flows seamlessly to the kitchen and dining room. The kitchen has a wonderful walk-in pantry and an island with a snack bar. Upstairs, you will find the home's bedrooms. The master suite is situated above the garage and includes a built-in bench and a walk-in closet. Bedrooms 2 and 3 share a centrally located hall bathroom. Back on the main floor, the house's 1 car garage accesses the home through a convenient mudroom with a bench and lockers.