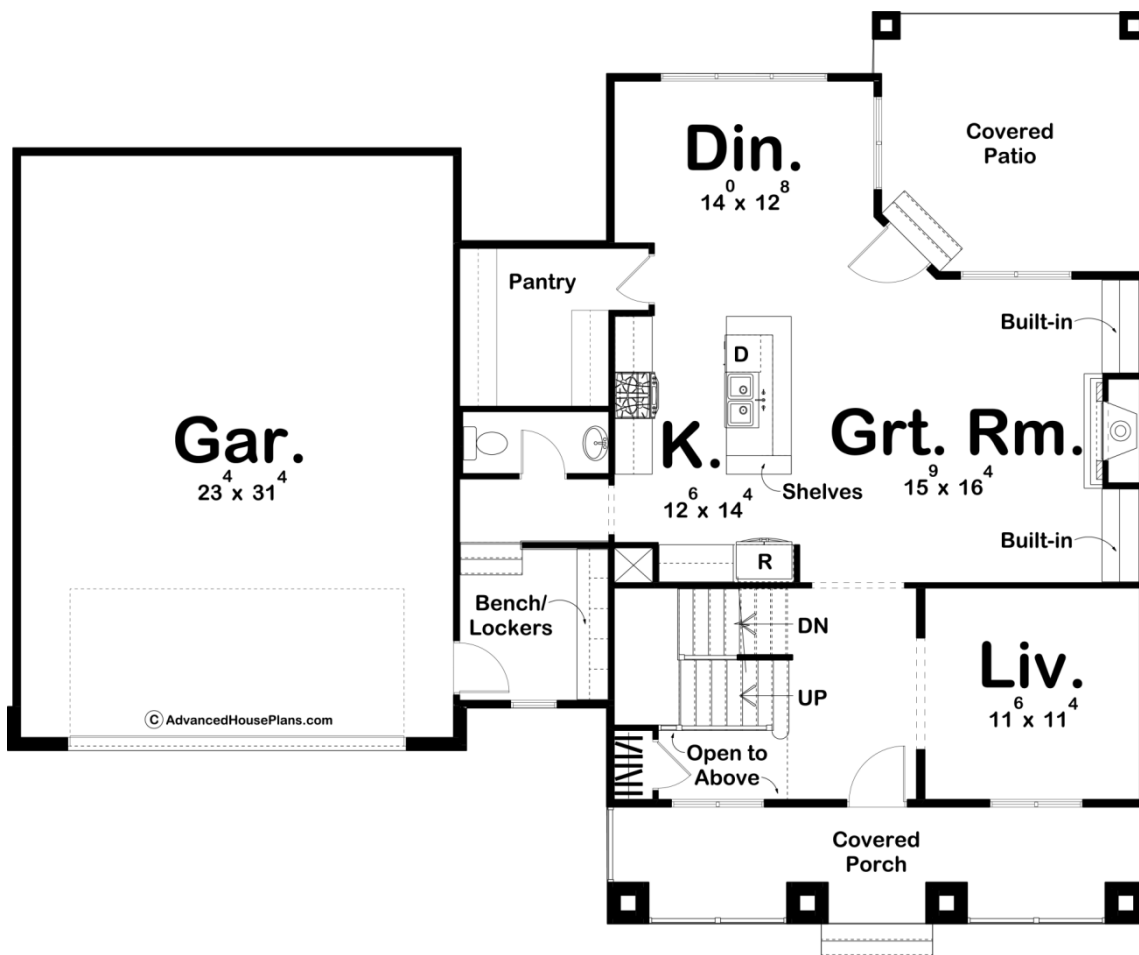


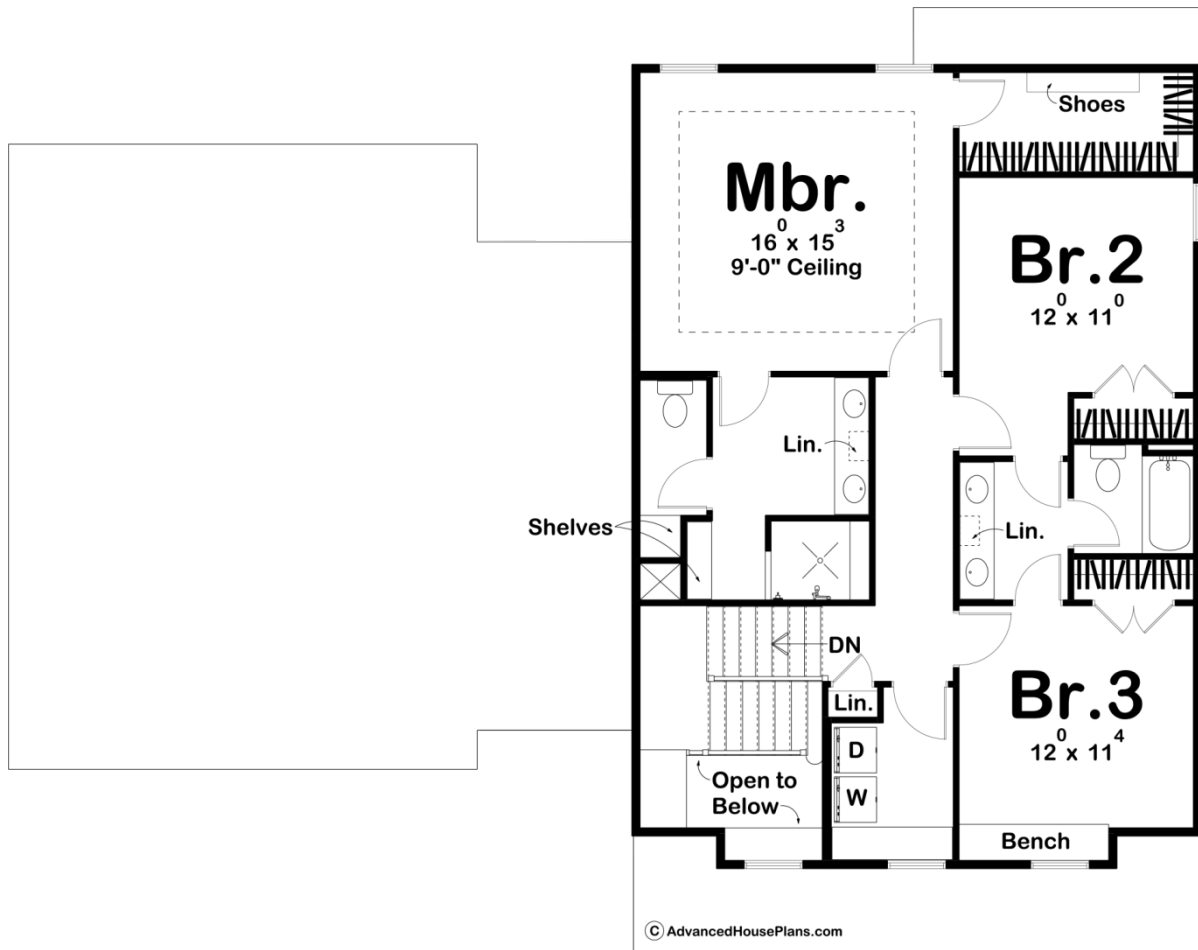


©WWW.ADVANCEDHOUSEPLANS.COM

29686 - Dakota Data Sheet

2251 SQ FT	3 BEDS	3 BATHS	2 BAYS	61' 0" WIDE	49' 0" DEEP
---------------	-----------	------------	-----------	----------------	----------------





Construction Specs

Layout

Bedrooms	3
Bathrooms	3
Garage Bays	2

Square Footage

Main Level	1198 Sq. Ft.
Second Level	1053 Sq. Ft.
Total Finished Area	2251 Sq. Ft.

Exterior Dimensions

Width	61' 0"
Depth	49' 0"

Default Construction Stats

Stats are unique to the individual plan.

Foundation Type	Basement
Exterior Wall Construction	2x4

Roof Pitches	6/12 Primary, 4/12 Secondary
Foundation Wall Height	9'
Main Wall Height	9'
Second Wall Height	8'

Plan Description

The Dakota is a modern-prairie style 2 story house plan with an elegant exterior and a functional, simple floor plan. It features classic elements of the prairie style - a low pitched roof, deep overhangs, formal covered porch - with a modern twist with simple use of materials. This home looks great from the street with its symmetry and style! The main floor of the Dakota features a formal living room, open living spaces in the dining, kitchen, and great rooms, and a mud room with some handy storage to keep your home free of clutter. There's a generously sized 2 car garage with extra depth to take advantage of storage or for a work area. The second floor is very efficient, with a spacious master suite. The master bath has his and her vanities, walk-in shower, and enclosed toilet. The walk-in closet is also well-sized. There's a jack and jill style bathroom to make sharing just a bit easier for the 2 secondary bedrooms. We've placed the laundry room upstairs too to save you from trips up and down stairs. As always any Advanced House Plans home plan can be customized to fit your needs with our alteration department. Whether you need to add another garage stall, change the front elevation, stretch the home larger or just make the home plan more affordable for your budget we can do that and more for you at Ahp.