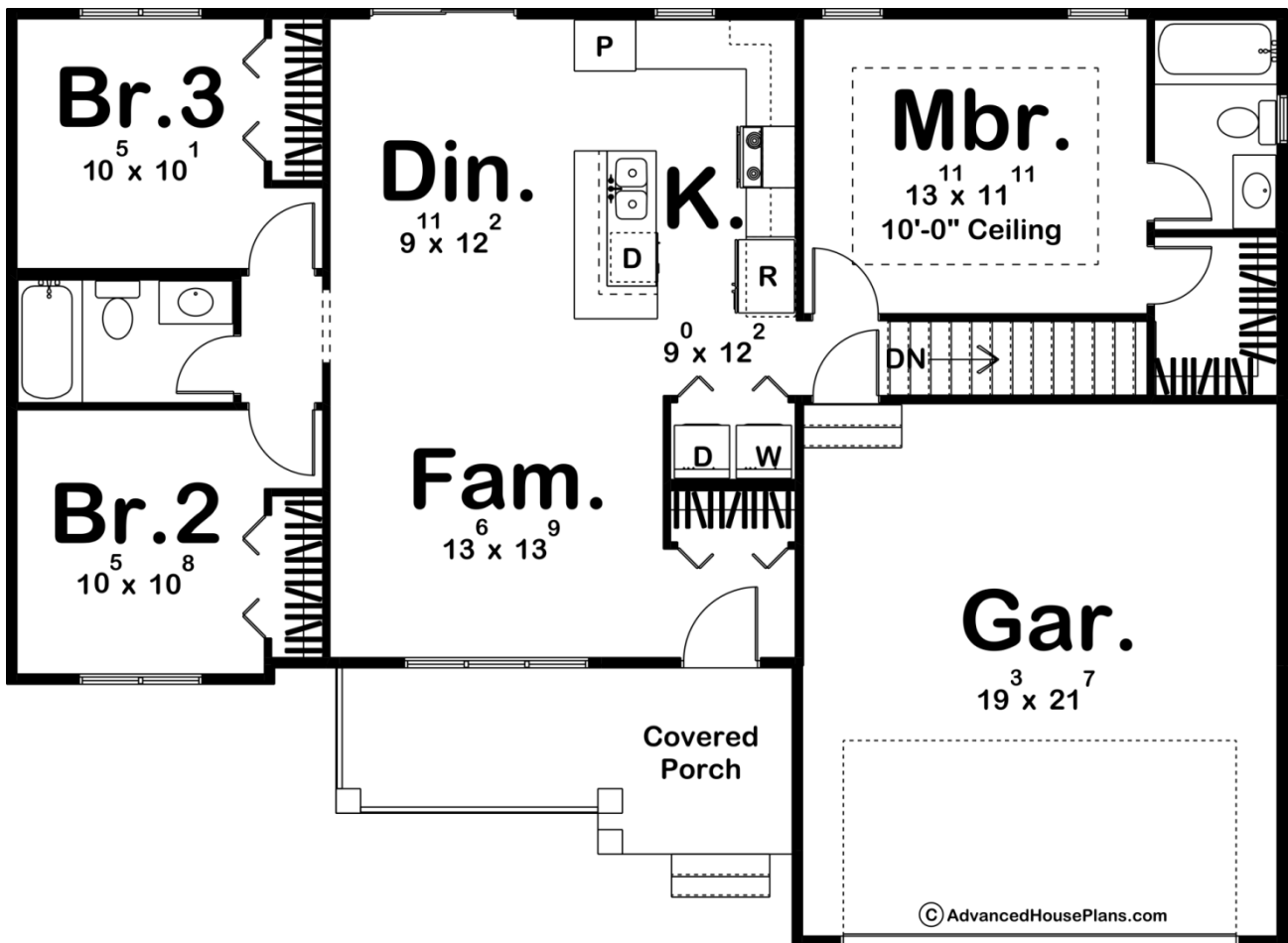




29411 - Daniels Data Sheet

1185 SQ FT	3 BEDS	2 BATHS	2 BAYS	52' 0" WIDE	38' 0" DEEP
---------------	-----------	------------	-----------	----------------	----------------



Construction Specs

Layout

Bedrooms

Bathrooms	2
Garage Bays	2

Square Footage

Main Level	1185 Sq. Ft.
Garage	436 Sq. Ft.
Total Finished Area	1185 Sq. Ft.

Exterior Dimensions

Width	52' 0"
Depth	38' 0"
Ridge Height <i>Calculated from main floor line</i>	21' 0"

Default Construction Stats

Stats are unique to the individual plan.

Foundation Type	Basement
Exterior Wall Construction	2x4
Roof Pitches	6/12
Foundation Wall Height	9'
Main Wall Height	9'

Plan Description

Welcome to this beautiful ranch plan, where modern farmhouse charm meets timeless comfort! As you approach, the inviting front porch beckons you to sit and savor the tranquility of your surroundings. Step inside, and you're instantly embraced by a bright and airy family room that flows seamlessly into the adjacent dinette area. The large windows in these spaces flood the home with natural light, creating a warm and welcoming ambiance that makes every day feel like a retreat. The open layout continues into the adjacent kitchen, where you'll find an ideal space for both everyday living and entertaining. On one side of this thoughtfully designed home, you'll discover two cozy bedrooms, perfect for family or guests, along with a conveniently located bathroom. Meanwhile, the opposite side is dedicated to your private sanctuary—the master bedroom. This spacious retreat features its own luxurious bathroom and a generous walk-in closet, providing both comfort and privacy. This layout masterfully balances open, communal areas with serene, personal spaces, ensuring a perfect blend of functionality and elegance.