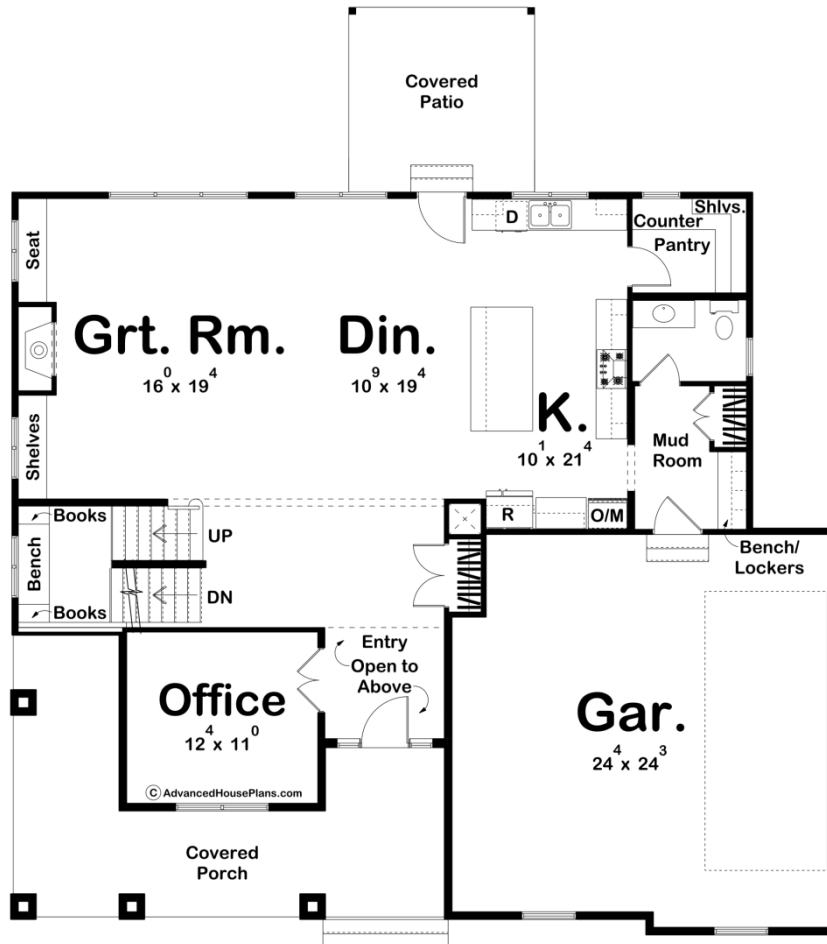
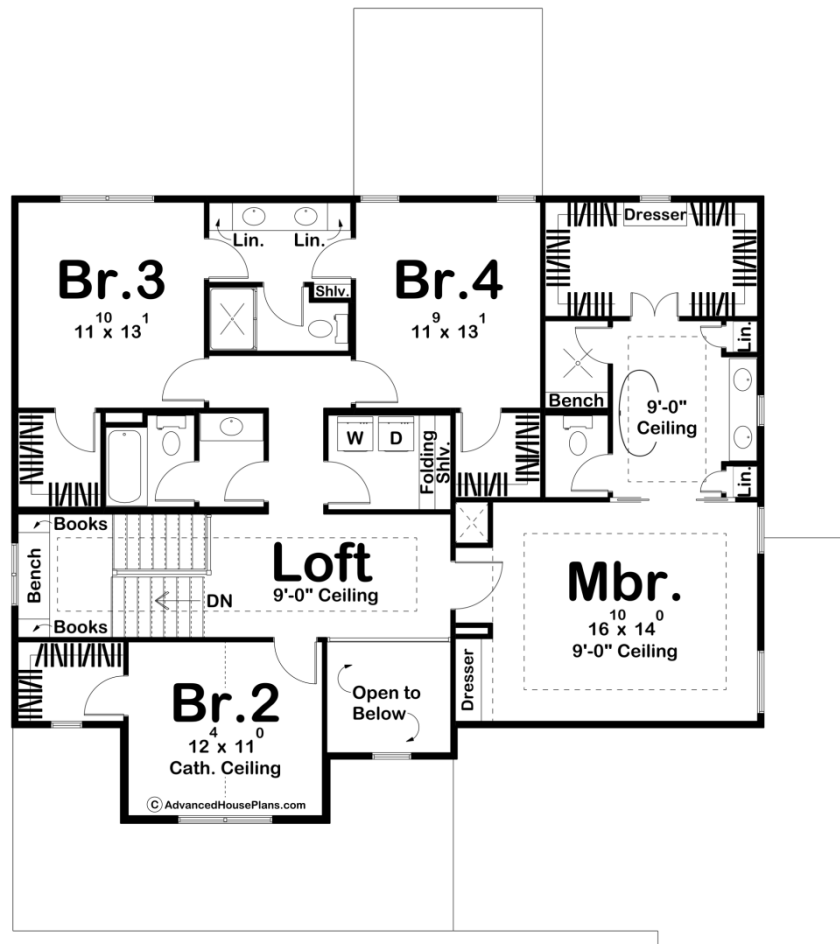




30141 - Darlington Data Sheet

2990 SQ FT	4 BEDS	4 BATHS	2 BAYS	53' 0" WIDE	59' 8" DEEP
---------------	-----------	------------	-----------	----------------	----------------





Construction Specs

Layout

Bedrooms	4
Bathrooms	4
Garage Bays	2

Square Footage

Main Level	1445 Sq. Ft.
Second Level	1545 Sq. Ft.
Covered Area	451 Sq. Ft.
Garage	613 Sq. Ft.
Total Finished Area	2990 Sq. Ft.

Exterior Dimensions

Width	53' 0"
Depth	59' 8"
Ridge Height	30' 4"
<i>Calculated from main floor line</i>	

Default Construction Stats

Stats are unique to the individual plan.

Foundation Type	Basement
Exterior Wall Construction	2x4
Roof Pitches	8/12 Primary, 10/12 4/12 Secondary
Foundation Wall Height	9'
Main Wall Height	9'
Second Wall Height	8'

Plan Description

The Darlington plan is a wonderful, traditional-style house plan. The exterior combines siding with stone to create a beautiful facade. A large front covered porch greets guests into the home. Just inside the home, you'll find yourself in a 2 story entryway. Just to the left of the entry is an amazing home office, which is a must for those who work from home. Further inside the home, the main living space is arranged in a beautiful open layout. The great room is warmed by a fireplace that has a built-in shelf to the left, and a seat to the right. The U-shaped kitchen includes a large island with a snack bar and a walk-in pantry. A door leads from the kitchen/dining area to the rear covered patio. Upstairs, you'll find 4 bedrooms including the amazing master suite. The master bedroom lies under a trayed ceiling and has a built-in dresser. The master bathroom includes a soaking tub, his/her vanities, and a large walk-in closet. Every bedroom has its own walk-in closet. Bedrooms 3 and 4 share a jack and jill bathroom. Back on the main level, the home's side-load 2-car garage accesses the home through a convenient mud room that includes a coat closet and a bench and lockers.