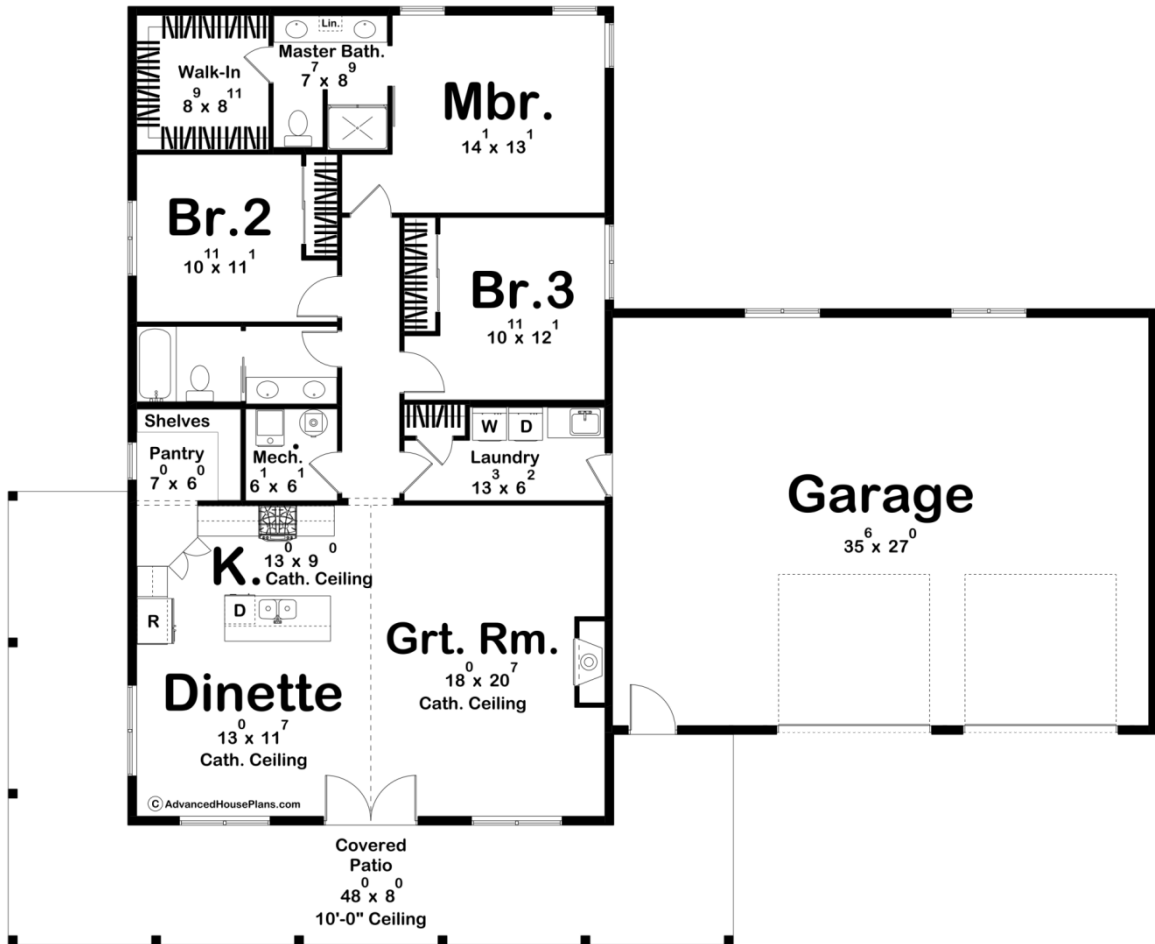




30274 - Davenport Data Sheet

1691 SQ FT	3 BEDS	2 BATHS	2 BAYS	76' 0" WIDE	62' 0" DEEP
---------------	-----------	------------	-----------	----------------	----------------



Construction Specs

Layout

Bedrooms

Bathrooms	2
Garage Bays	2

Square Footage

Main Level	1691 Sq. Ft.
Covered Area	608 Sq. Ft.
Garage	1008 Sq. Ft.
Total Finished Area	1691 Sq. Ft.

Exterior Dimensions

Width	76' 0"
Depth	62' 0"
Ridge Height <i>Calculated from main floor line</i>	26' 5"

Default Construction Stats

Stats are unique to the individual plan.

Foundation Type	Slab
Exterior Wall Construction	2x6
Roof Pitches	Primary 10/12, Secondary 4/12
Main Wall Height	12'

Plan Description

Welcome to the charming and inviting Barndominium-style house plan! Nestled on a picturesque property, this delightful home combines the rustic charm of a barn with the modern comforts of a stylish dwelling. From the moment you approach, you'll be greeted by the wrap-around covered porch, providing the perfect spot to relax and enjoy the scenic views. As you step through the front door, you'll find yourself in the heart of the home—the spacious great room and dining area. The cathedral ceiling adds a sense of grandeur and openness, creating a warm and inviting atmosphere. The abundant natural light filtering in through the large windows further enhances the sense of space and tranquility. An open floor plan seamlessly connects the great room and dining area to the well-appointed kitchen, making it an ideal layout for entertaining guests or spending quality time with family. The kitchen boasts modern appliances, ample countertop space, and plenty of storage with the walk-in pantry, making it a chef's dream. Venturing down the hall, you'll discover three cozy bedrooms, each offering a private retreat. Two of the bedrooms share a conveniently located hall bathroom, complete with modern fixtures and finishes, catering to the needs of guests or family members. The third bedroom, the master suite, exudes luxury and comfort. It features its own en-suite bathroom, equipped with all the necessary amenities for relaxation and rejuvenation. Additionally, the master suite includes a spacious walk-in closet, ensuring ample space for all your wardrobe needs. This plan also boasts a two-car garage, providing secure parking and extra storage for vehicles, tools, or recreational equipment. The garage conveniently connects to the house via the laundry room. With its unique blend of rustic charm and modern comfort, this Barndominium-style house plan offers a cozy and welcoming place to call home. Whether you're enjoying the peaceful serenity of the wrap-around porch or the openness of the great room, this house plan is designed to create lasting memories and a comfortable lifestyle for its occupants.