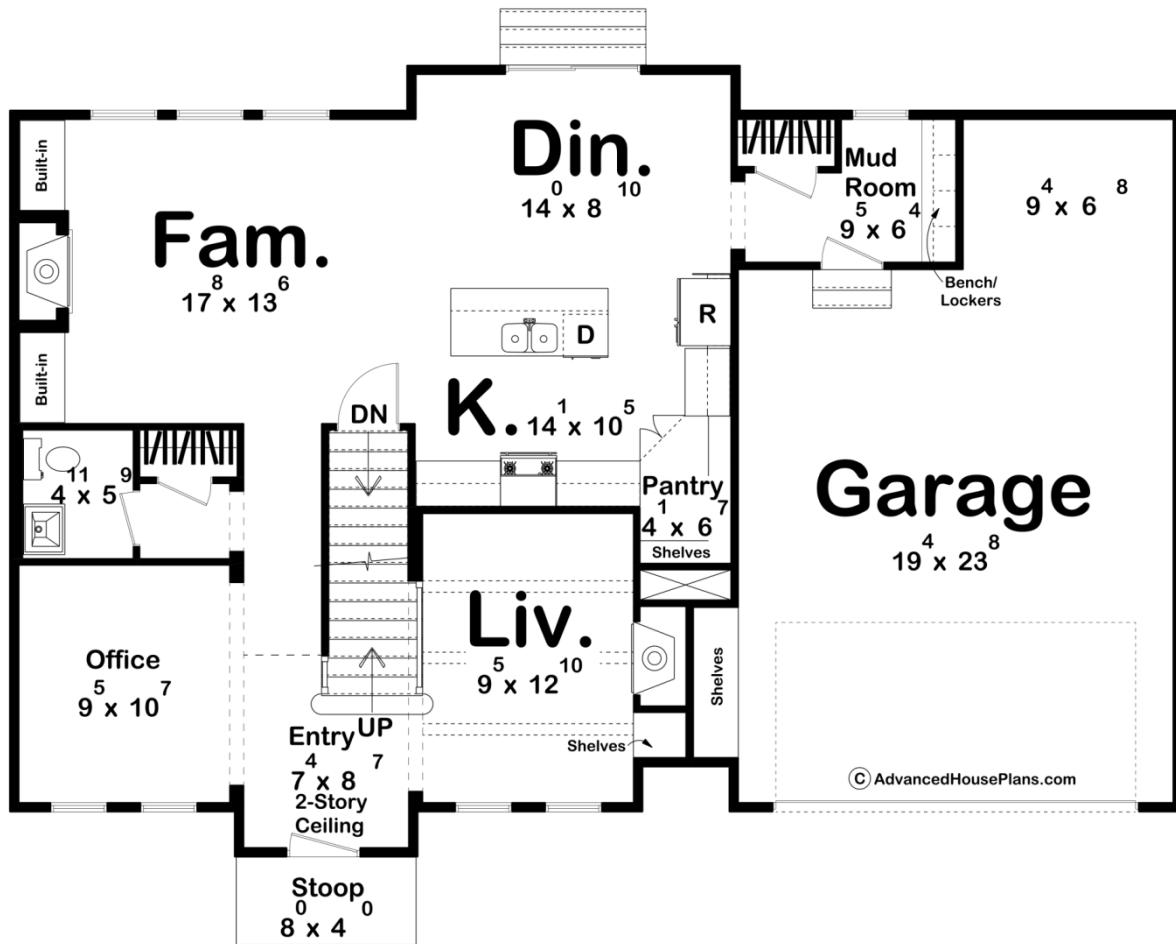
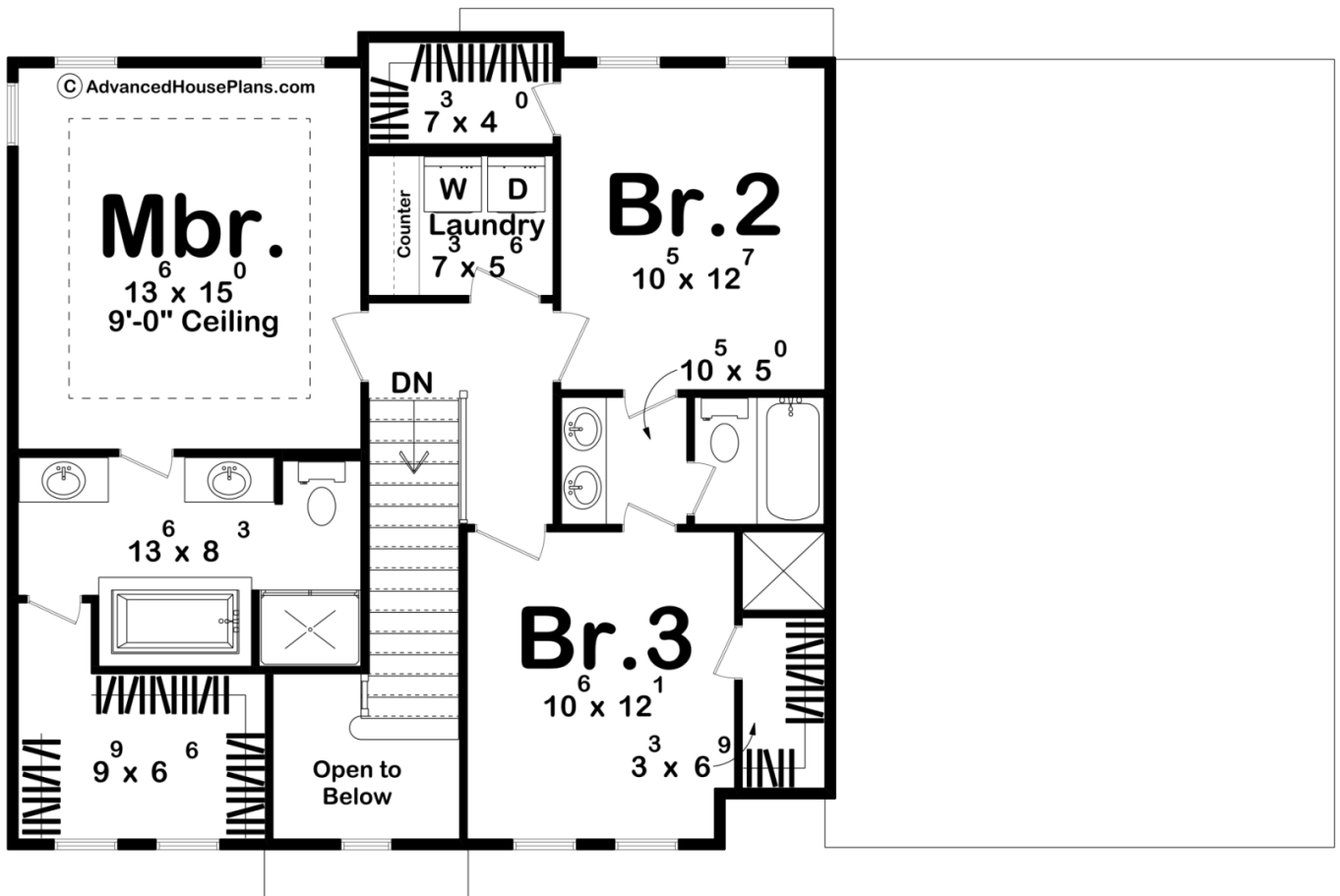




29315 - Duncan Data Sheet

| | | | | | |
|---------------|-----------|------------|-----------|----------------|----------------|
| 1998 SQ FT | 3 BEDS | 3 BATHS | 2 BAYS | 52' 0" WIDE | 39' 0" DEEP |
|---------------|-----------|------------|-----------|----------------|----------------|





Construction Specs

Layout

| | |
|-------------|---|
| Bedrooms | 3 |
| Bathrooms | 3 |
| Garage Bays | 2 |

Square Footage

| | |
|---------------------|--------------|
| Main Level | 1084 Sq. Ft. |
| Second Level | 914 Sq. Ft. |
| Garage | 554 Sq. Ft. |
| Total Finished Area | 1998 Sq. Ft. |

Exterior Dimensions

| | |
|--|--------|
| Width | 52' 0" |
| Depth | 39' 0" |
| Ridge Height | 33' 0" |
| <i>Calculated from main floor line</i> | |

Default Construction Stats

Stats are unique to the individual plan.

| | |
|----------------------------|-------------------------------|
| Foundation Type | Basement |
| Exterior Wall Construction | 2x4 |
| Roof Pitches | Primary 8/12, Secondary 10/12 |
| Foundation Wall Height | 9' |
| Main Wall Height | 9' |
| Second Wall Height | 8' |

Plan Description

This charming Colonial-style home combines timeless design with an efficient layout. Step through the gabled front stoop to find a cozy office and formal living room with a fireplace. The open great room, dining area, and kitchen at the rear offer a perfect space for gatherings, with a second fireplace and large windows for natural light. The kitchen boasts an island and walk-in pantry. A mudroom with a bench and coat closet connects to the 2-car garage, offering extra storage or workspace. Upstairs, the master suite features dual vanities, a soaking tub, shower, and walk-in closet, while Bedrooms 2 and 3 share a Jack-and-Jill bath, each with their own walk-in closets. A convenient laundry room with a folding counter completes the upstairs.