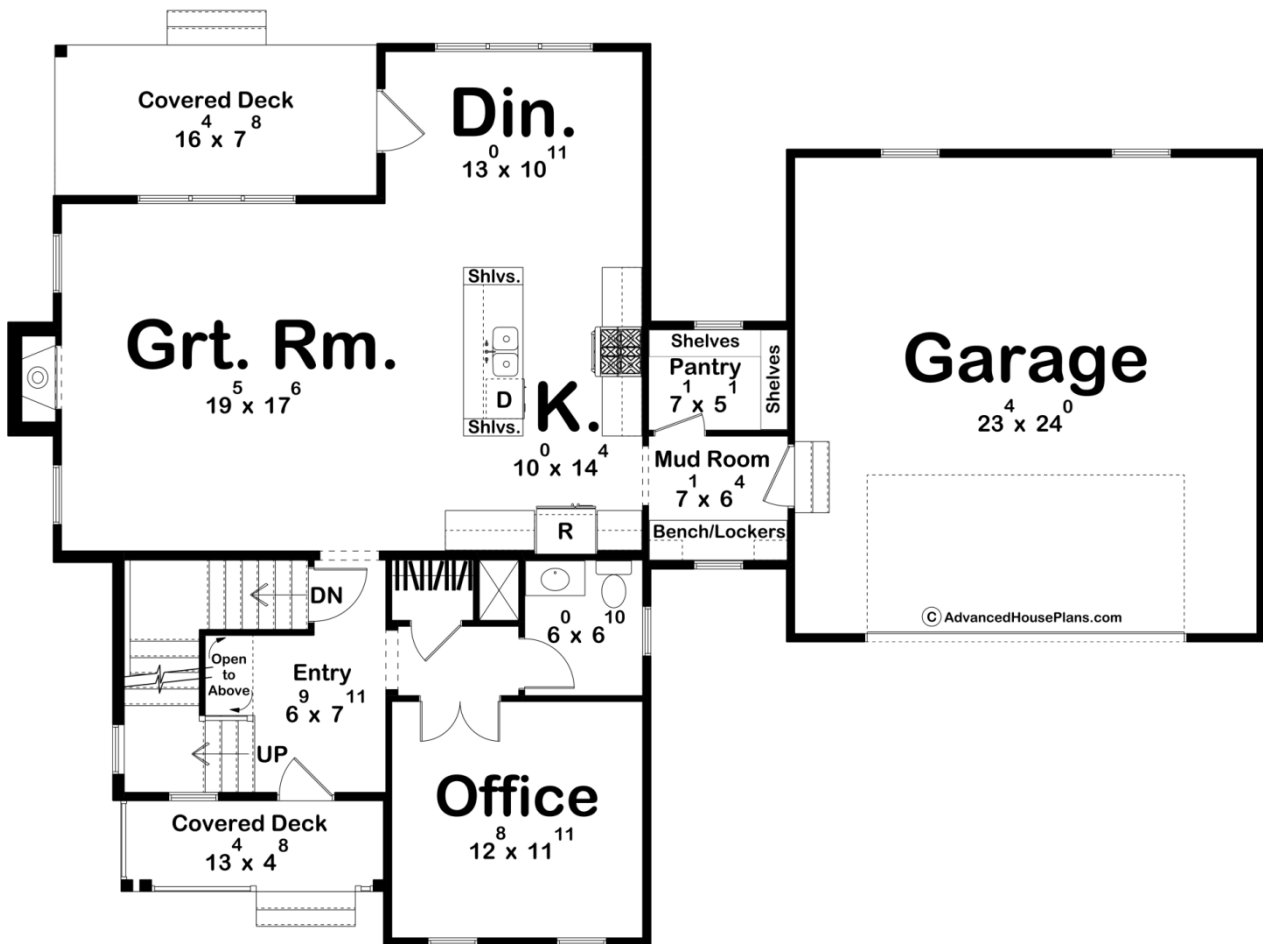
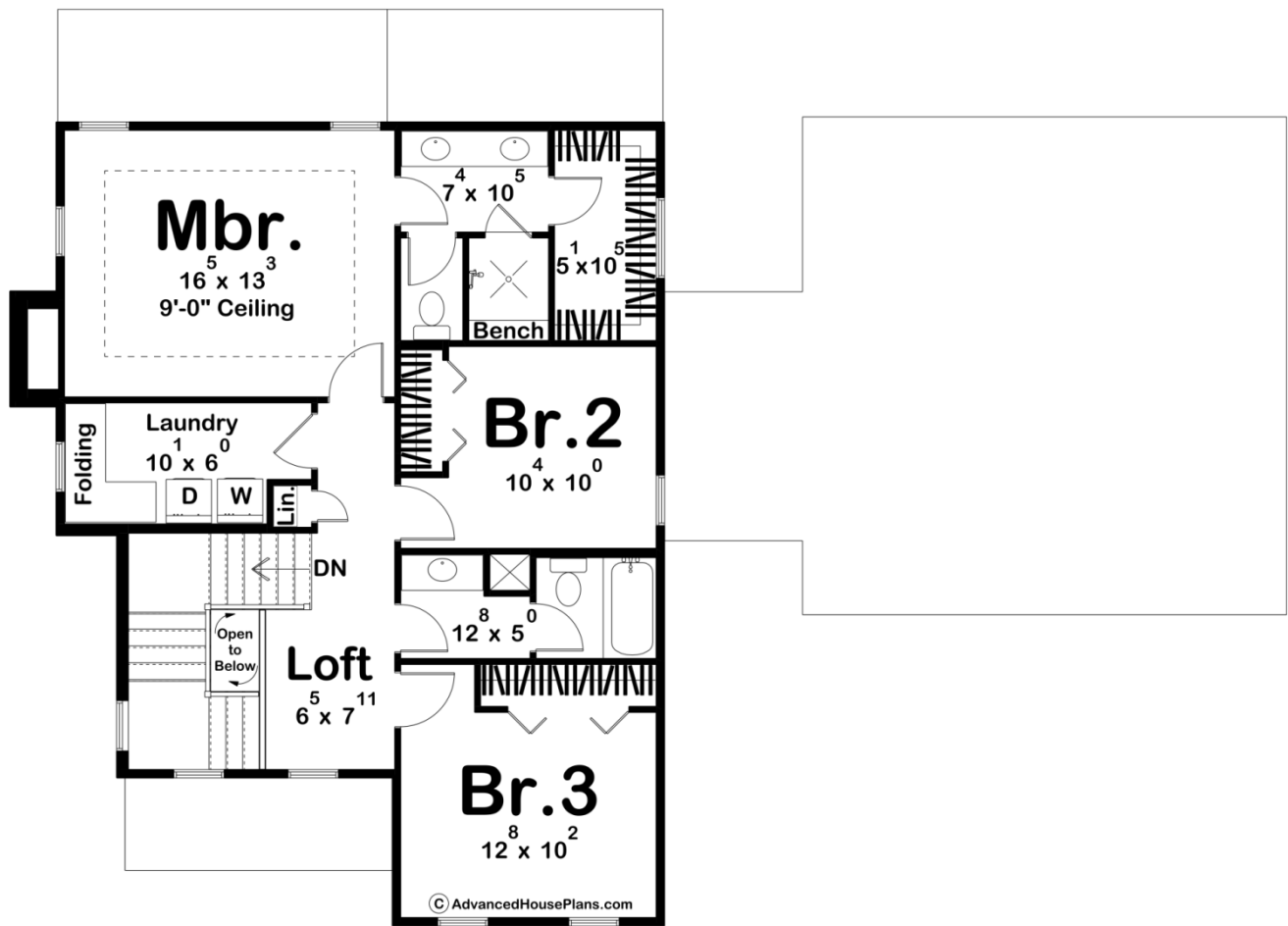




30594 - Elk Ridge Data Sheet

2104 SQ FT	3 BEDS	3 BATHS	2 BAYS	63' 8" WIDE	45' 8" DEEP
---------------	-----------	------------	-----------	----------------	----------------





Construction Specs

Layout

Bedrooms	3
Bathrooms	3
Garage Bays	2

Square Footage

Main Level	1161 Sq. Ft.
Second Level	943 Sq. Ft.
Covered Area	187 Sq. Ft.
Garage	588 Sq. Ft.
Total Finished Area	2104 Sq. Ft.

Exterior Dimensions

Width	63' 8"
Depth	45' 8"
Ridge Height	29' 8"
<i>Calculated from main floor line</i>	

Default Construction Stats

Stats are unique to the individual plan.

Foundation Type	Basement
Exterior Wall Construction	2x4
Roof Pitches	Primary 8/12, Secondary 12/12, 4/12, 6/12
Foundation Wall Height	9'
Main Wall Height	9'
Second Wall Height	8'

Plan Description

This two-story modern farmhouse offers a charming blend of rustic and contemporary design elements. The exterior is adorned with lap siding, trim detailing, and exposed rafters, accented with natural wood finishes that add warmth and character. A front-facing two-car garage seamlessly integrates into the façade, while a small front covered deck welcomes guests with cozy farmhouse charm. At the back, a spacious covered deck provides the perfect spot for outdoor relaxation or entertaining. Upon entry, you're greeted by a light-filled foyer featuring U-shaped stairs leading to the upper floor. Adjacent to the entry is a private office, ideal for working from home. The open-concept main floor boasts a great room, a cozy fireplace, and large windows that invite natural light. The great room flows effortlessly into the kitchen, equipped with modern amenities, and the dining area, perfect for family gatherings or entertaining. The upstairs includes three bedrooms and two bathrooms, including a luxurious primary suite with a spacious ensuite bath and walk-in closet. A small loft area provides a versatile space for a playroom, reading nook, or additional seating. Conveniently located on the upper level, the laundry room adds functionality to the home's thoughtful layout. This modern farmhouse plan combines timeless style with practical living spaces, making it a perfect choice for families who appreciate both elegance and comfort.