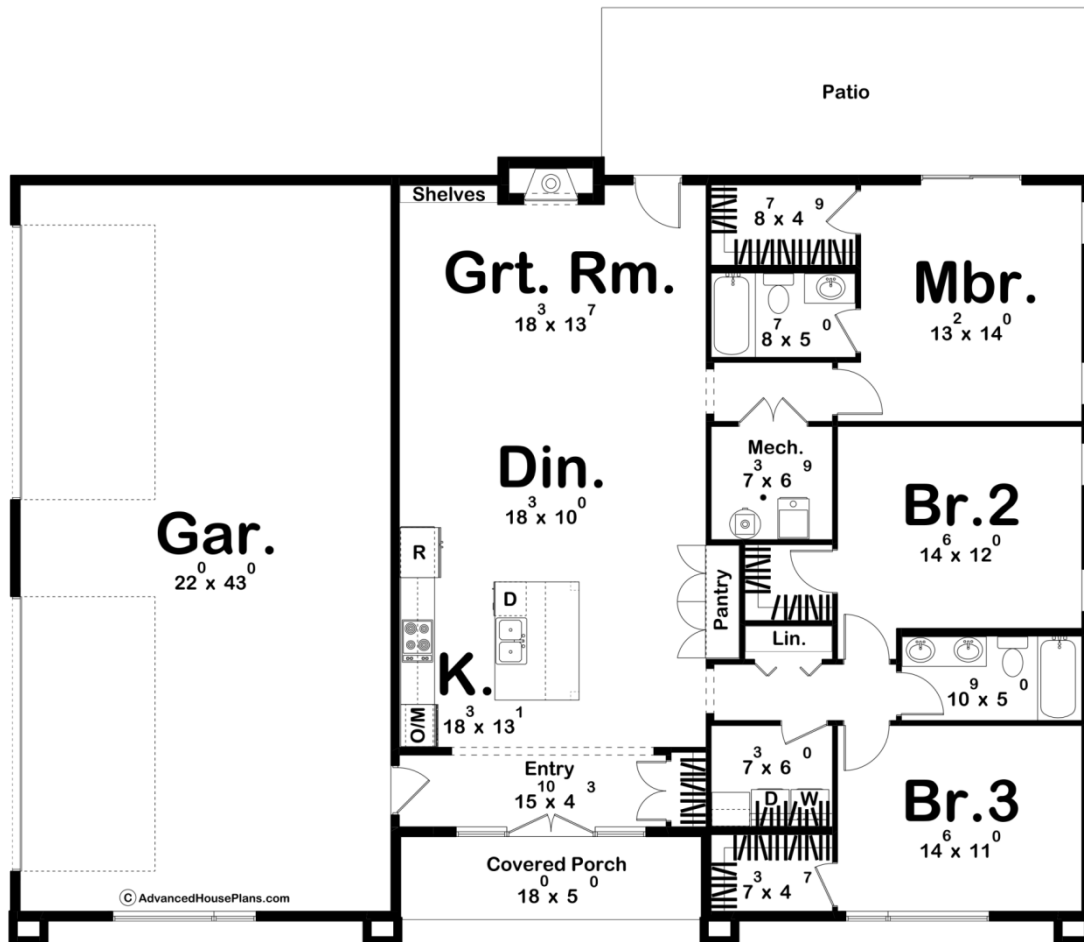




**30411 - Elwood Data Sheet**

1685 SQ FT	3 BEDS	2 BATHS	4 BAYS	64' 0" WIDE	46' 4" DEEP
---------------	-----------	------------	-----------	----------------	----------------



**Construction Specs**

Layout

Bedrooms

Bathrooms	2
Garage Bays	4

### Square Footage

Main Level	1685 Sq. Ft.
Covered Area	90 Sq. Ft.
Garage	993 Sq. Ft.
Total Finished Area	1685 Sq. Ft.

### Exterior Dimensions

Width	64' 0"
Depth	46' 4"
Ridge Height <i>Calculated from main floor line</i>	17' 8"

### Default Construction Stats

*Stats are unique to the individual plan.*

Foundation Type	Slab
Exterior Wall Construction	2x6
Roof Pitches	Primary 2/12, Secondary Flat
Main Wall Height	12'

## Plan Description

Introducing the epitome of modern living in this spacious and sleek house plan, designed to cater to your every need. This contemporary residence boasts a stunning facade, complete with a generously sized 4-car garage, making it a haven for both car enthusiasts and homeowners who appreciate ample storage space. As you step inside, you'll be greeted by an open, inviting layout that combines the kitchen, dining area, and great room into one expansive living space. The heart of this home is undoubtedly the open kitchen, a chef's dream come true. It features top-of-the-line appliances, and an island with a breakfast bar, making it perfect for culinary creativity and entertaining guests. The dining area, adjacent to the kitchen, offers a warm and welcoming atmosphere for family meals and gatherings, while the great room is designed for relaxation and comfort, with a stone fireplace. The master bedroom is a sanctuary of luxury and privacy. It features a spacious layout with direct access to an en-suite bathroom and an enviable walk-in closet. This house plan also includes two additional bedrooms, each with its own walk-in closet, providing ample storage for personal belongings. These bedrooms share a well-appointed hall bathroom, ensuring convenience and comfort for family members and guests alike. Convenience is a hallmark of this design, with a shared hall laundry room located near the bedrooms, making the chore of laundry a breeze.