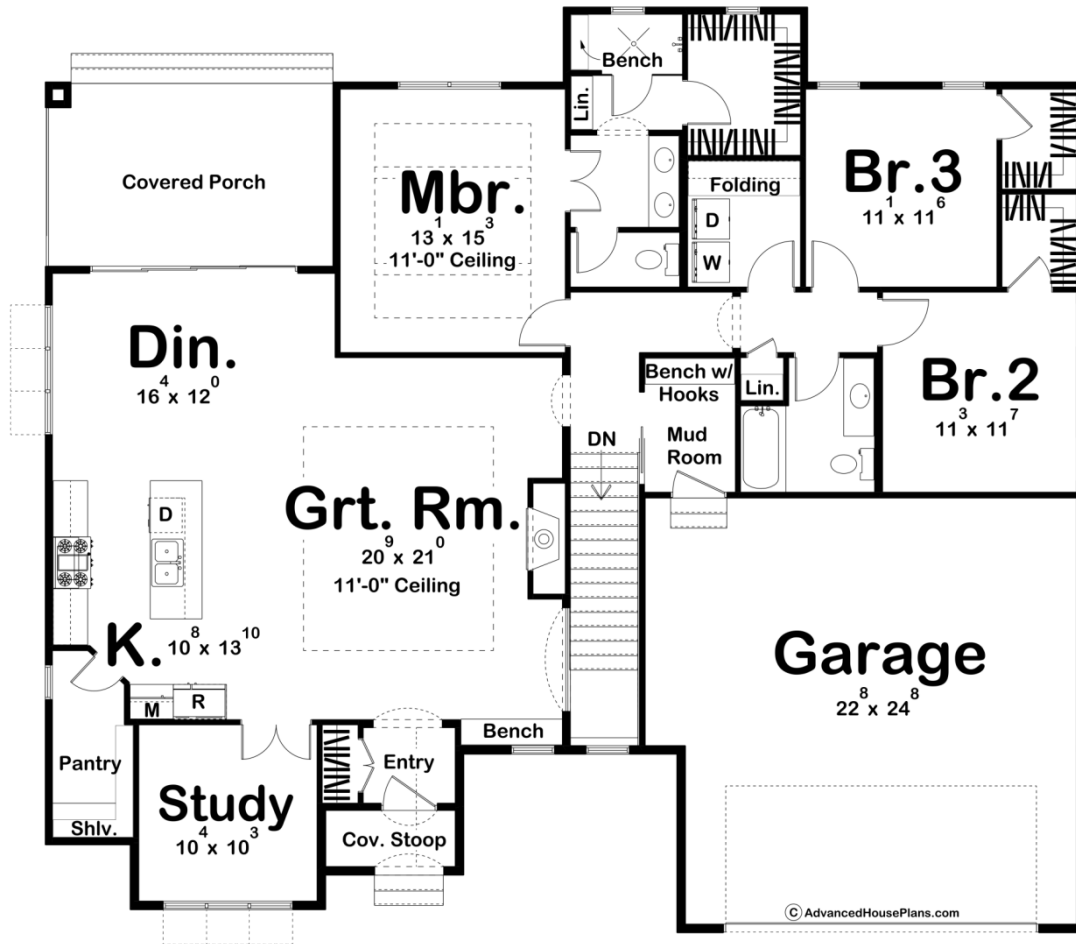
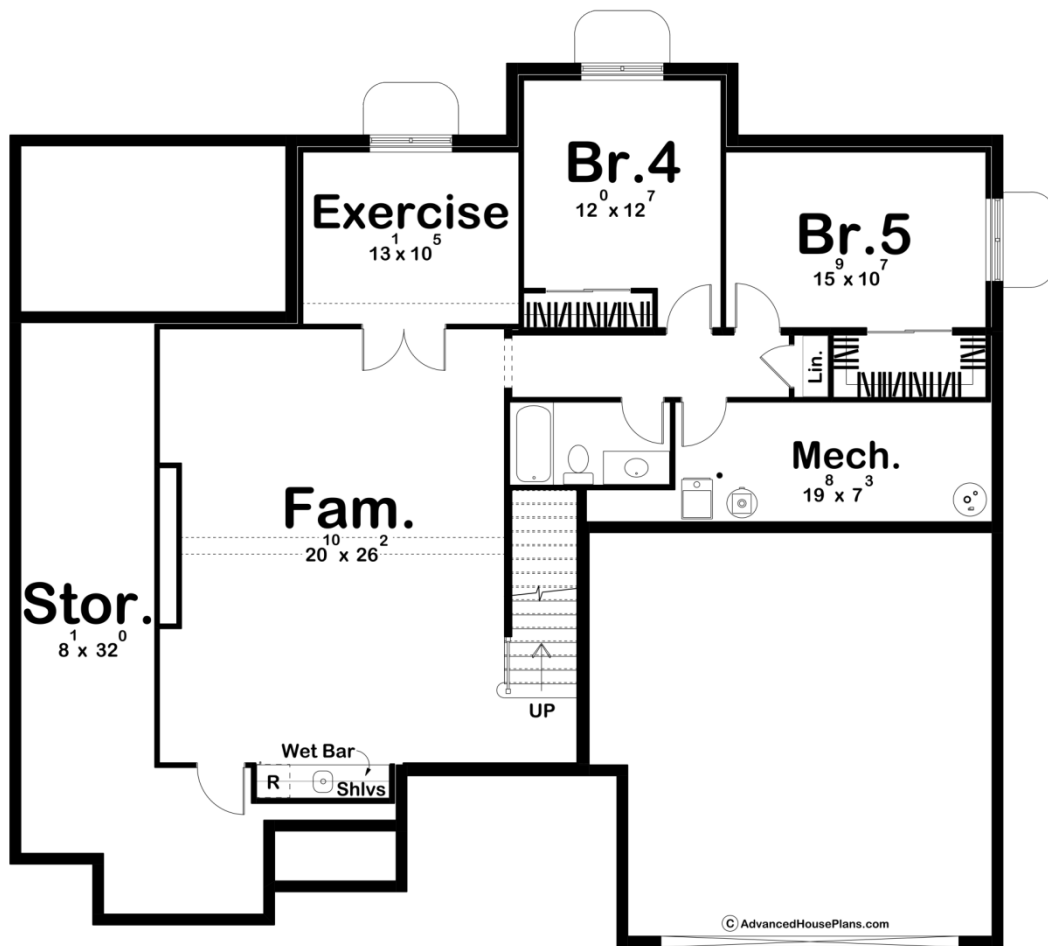




30197 - Evans Brook Data Sheet

1984 SQ FT	3 BEDS	2 BATHS	2 BAYS	60' 0" WIDE	53' 4" DEEP
---------------	-----------	------------	-----------	----------------	----------------





Construction Specs

Layout

Bedrooms	3
Bathrooms	2
Garage Bays	2

Square Footage

Main Level	1984 Sq. Ft.
Covered Area	207 Sq. Ft.
Garage	612 Sq. Ft.
Total Finished Area	1984 Sq. Ft.

Exterior Dimensions

Width	60' 0"
Depth	53' 4"
Ridge Height	27' 4"
<i>Calculated from main floor line</i>	

Default Construction Stats

Stats are unique to the individual plan.

Foundation Type	Basement
Exterior Wall Construction	2x4
Roof Pitches	Primary 10/12, Secondary 16/12
Foundation Wall Height	9'
Main Wall Height	10'

Plan Description

The Evans Brook plan is a beautiful cottage style plan with a gorgeous curb appeal. The stone accents on the outside of the home are a perfect touch for adding dimension to the home. As you walk up to the front of the house, there is a beautiful entryway that welcomes you inside. A few steps in, and you're in a large space complete with the great room, dining room, study, and kitchen. The kitchen has a large walk-in pantry, as well as a kitchen island with a breakfast bar and an entrance to a private study. The dining room has large sliding doors, perfect for stepping outside on the covered porch after a meal. Heading through the great room and into a hallway leads you to the bedrooms. All bedrooms have walk-in closets, and bedrooms two and three share a hallway bathroom. The master has 11 foot ceilings, and is complete with a large bathroom, with double vanities and private areas for the shower and toilet, as well as a large walk-in closet. Along with the hallway to the bedrooms, there are also stairs that go down to an optional basement. This space allows for two additional bedrooms, a bathroom, family room, exercise room, as well as a large storage space and wet bar.