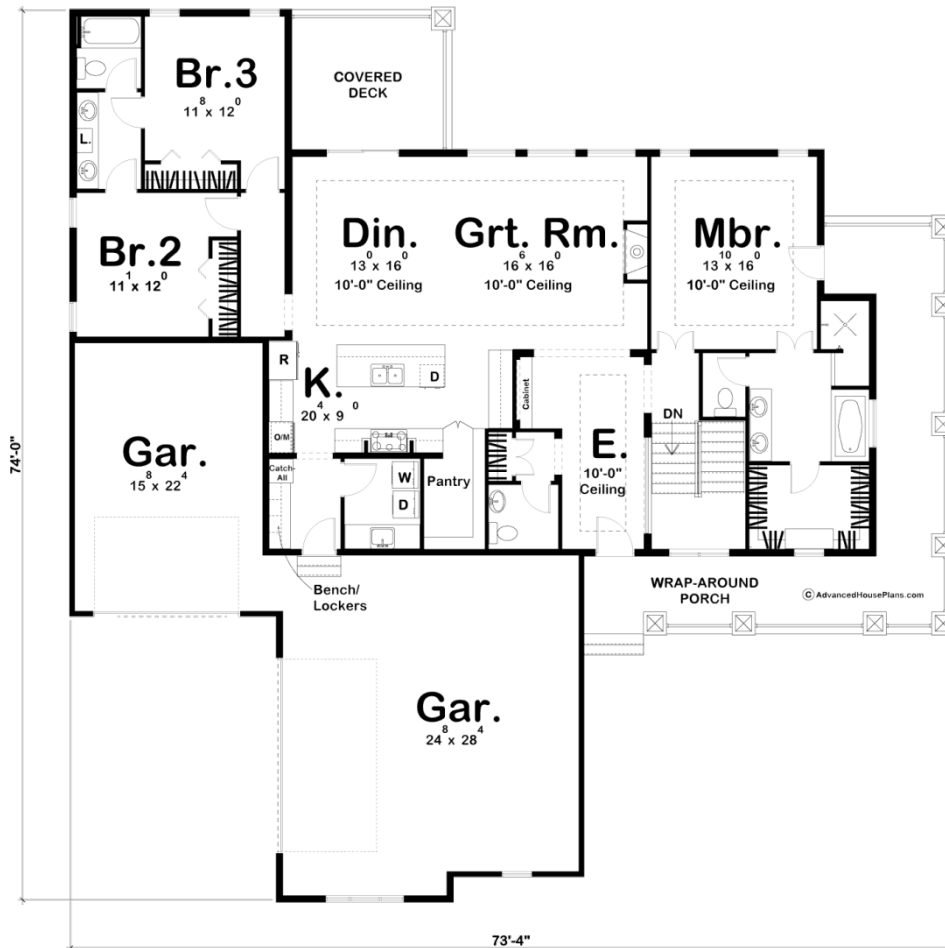




**29370 - Fair Acres Data Sheet**

2135 SQ FT	3 BEDS	3 BATHS	3 BAYS	74' 0" WIDE	74' 0" DEEP
---------------	-----------	------------	-----------	----------------	----------------



**Construction Specs**

**Layout**

Bedrooms

Bathrooms 3

Garage Bays 3

### Square Footage

Main Level 2135 Sq. Ft.

Garage 1074 Sq. Ft.

Total Finished Area 2135 Sq. Ft.

### Exterior Dimensions

Width 74' 0"

Depth 74' 0"

Ridge Height 26' 0"

*Calculated from main floor line*

### Default Construction Stats

*Stats are unique to the individual plan.*

Foundation Type Basement

Exterior Wall Construction 2x4

Roof Pitches 10/12 Primary 4/12 Secondary

Foundation Wall Height 9'

Main Wall Height 9'

## Plan Description

This beautifully configured Modern Farmhouse house plan offers amenities that are usually found in much larger home designs. On the outside, tapered pillars line the wrap-around porch and put on a striking display of curb appeal. Just inside the ranch floor plan, the entry area greets guest with a coat closet, cabinet and powder bath. The entry's 10-foot ceiling continues into the Great Room, which is warmed by a fireplace and brightened by a trio of generous windows to the rear. The ranch kitchen boasts plenty of counter space in addition to the spacious island's work area. Beyond the dining area, a covered deck extends entertaining options. The master suite accesses the wrap-around porch and enjoys a luxurious bath, complete with compartmented toilet, walk-in shower, and large walk-in closet. On the other side of this house plan, bedrooms 2 and 3 share a Jack-and-Jill bath with dual sinks and a compartmented toilet.