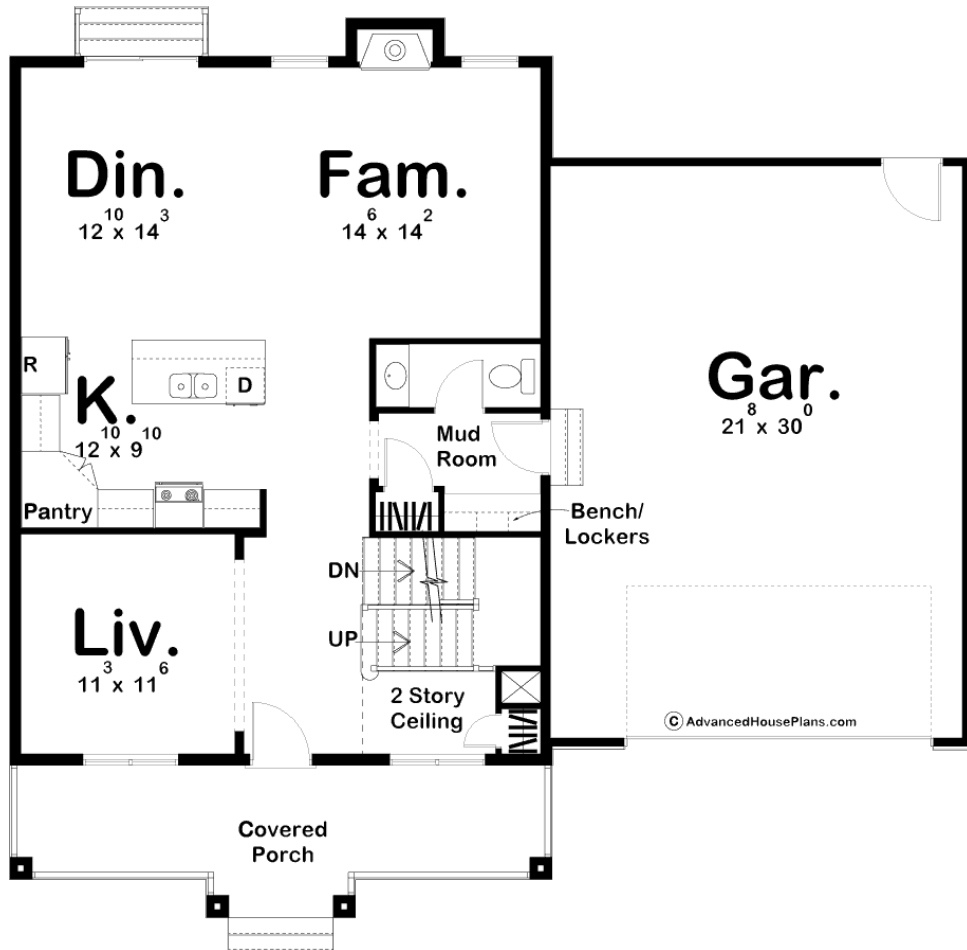


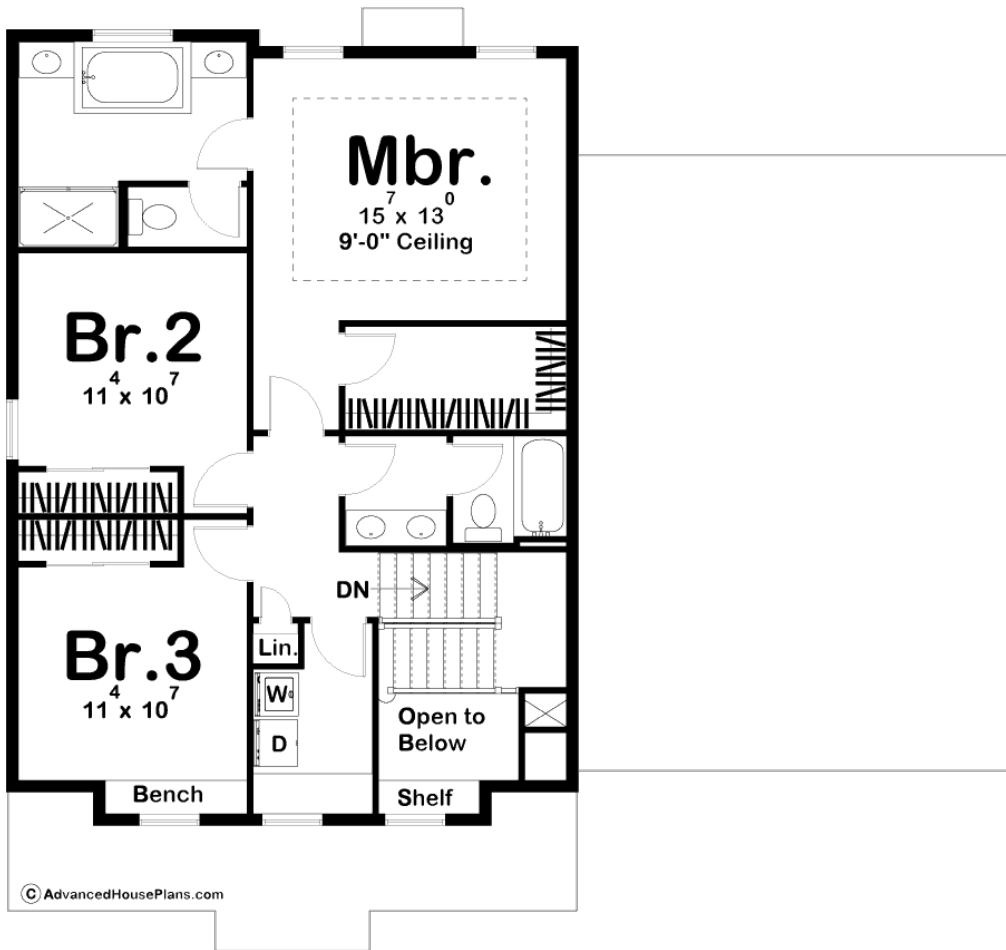


© WWW.ADVANCEDHOUSEPLANS.COM

29394 - Faust Data Sheet

2022 SQ FT	3 BEDS	3 BATHS	2 BAYS	51' 0" WIDE	47' 0" DEEP
---------------	-----------	------------	-----------	----------------	----------------





Construction Specs

Layout	
Bedrooms	3
Bathrooms	3
Garage Bays	2
Square Footage	
Main Level	1045 Sq. Ft.
Second Level	977 Sq. Ft.
Garage	675 Sq. Ft.
Total Finished Area	2022 Sq. Ft.
Exterior Dimensions	
Width	51' 0"
Depth	47' 0"
Ridge Height	27' 0"
<i>Calculated from main floor line</i>	

Default Construction Stats

Stats are unique to the individual plan.

Foundation Type	Basement
Exterior Wall Construction	2x4
Roof Pitches	5/12
Foundation Wall Height	9'
Main Wall Height	9'
Second Wall Height	8'

Plan Description

The Faust is a modern-prairie style 2 story house plan with an elegant exterior and a functional, simple floor plan. It features classic elements of the prairie style - a low pitched roof, deep overhangs, formal covered porch - with a modern twist with simple use of materials. This home looks great from the street with its symmetry and style! The main floor of the Faust features a formal living room, open living spaces in the dining, kitchen, and family rooms, and a mud room with some handy storage to keep your home free of clutter. There's a generously sized 2 car garage with extra depth to take advantage of storage or for a work area. The second floor is very efficient, with a spacious master suite. The master bath has his and her vanities, whirlpool tub, shower, and enclosed toilet. The walk-in closet is also well-sized. We've placed the laundry room upstairs too to save you from trips up and down stairs.