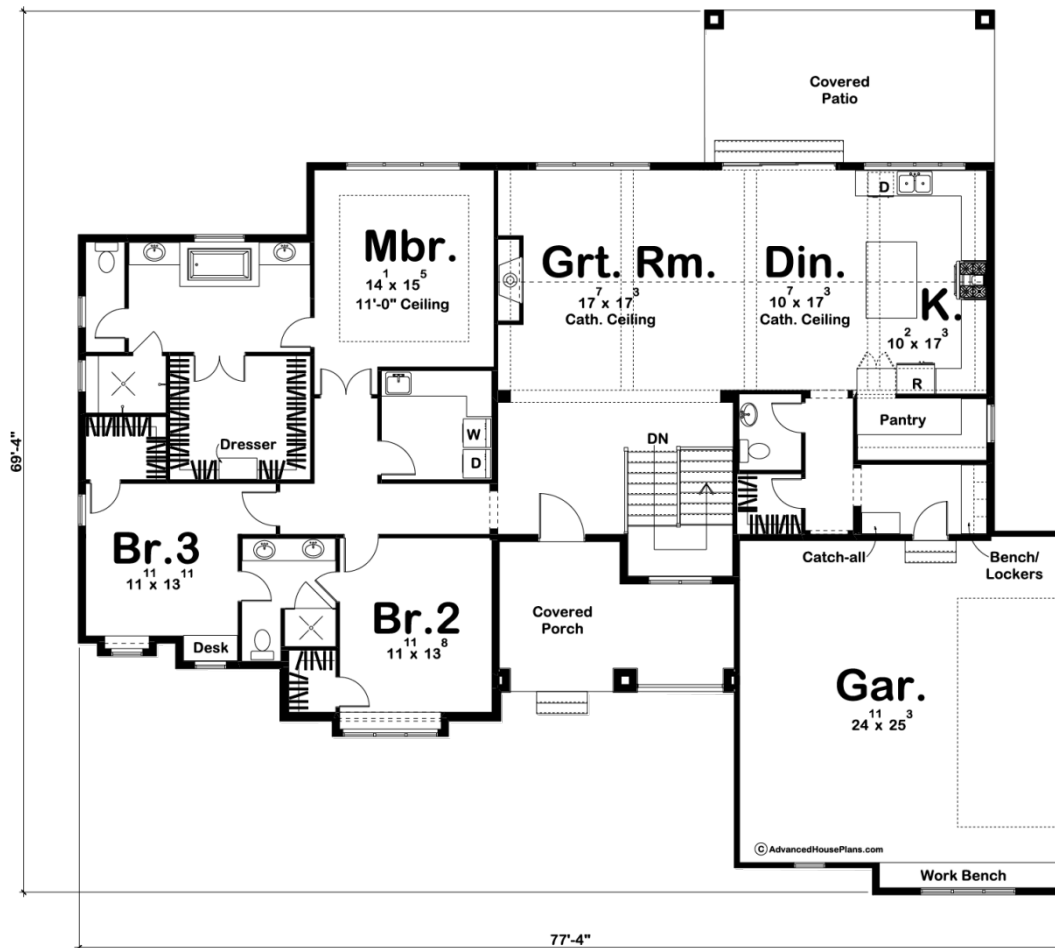




29410 - Fire Ridge Data Sheet

2448 SQ FT	3 BEDS	3 BATHS	2 BAYS	78' 0" WIDE	70' 0" DEEP
---------------	-----------	------------	-----------	----------------	----------------



Construction Specs

Layout

Bedrooms

Bathrooms	3
-----------	---

Garage Bays	2
-------------	---

Square Footage

Main Level	2448 Sq. Ft.
------------	--------------

Garage	691 Sq. Ft.
--------	-------------

Total Finished Area	2448 Sq. Ft.
---------------------	--------------

Exterior Dimensions

Width	78' 0"
-------	--------

Depth	70' 0"
-------	--------

Ridge Height	29' 0"
--------------	--------

Calculated from main floor line

Default Construction Stats

Stats are unique to the individual plan.

Foundation Type	Basement
-----------------	----------

Exterior Wall Construction	2x4
----------------------------	-----

Roof Pitches	12/12 Primary 10/12, 4/12 Secondary
--------------	-------------------------------------

Foundation Wall Height	9'
------------------------	----

Main Wall Height	10'
------------------	-----

Plan Description

The great expanses of this Modern Mountain 1 story house plan are highlighted by two separate outdoor living areas -- a covered front porch, and covered patio. Inside, immediate impressions are made by a soaring wood-beamed cathedral ceiling in the great room, dinette and kitchen. The kitchen, with expansive work island, is open to the dining area and offers a large walk-in pantry. Away from the living areas, the main floor's master suite features an oversized walk-in closet, and his and her vanities in the bath. Opposite, bedroom 2 and 3 share a Jack-n-Jill bath and both have their own walk-in closets. The side load garage offers great street appeal to this Modern house plan.