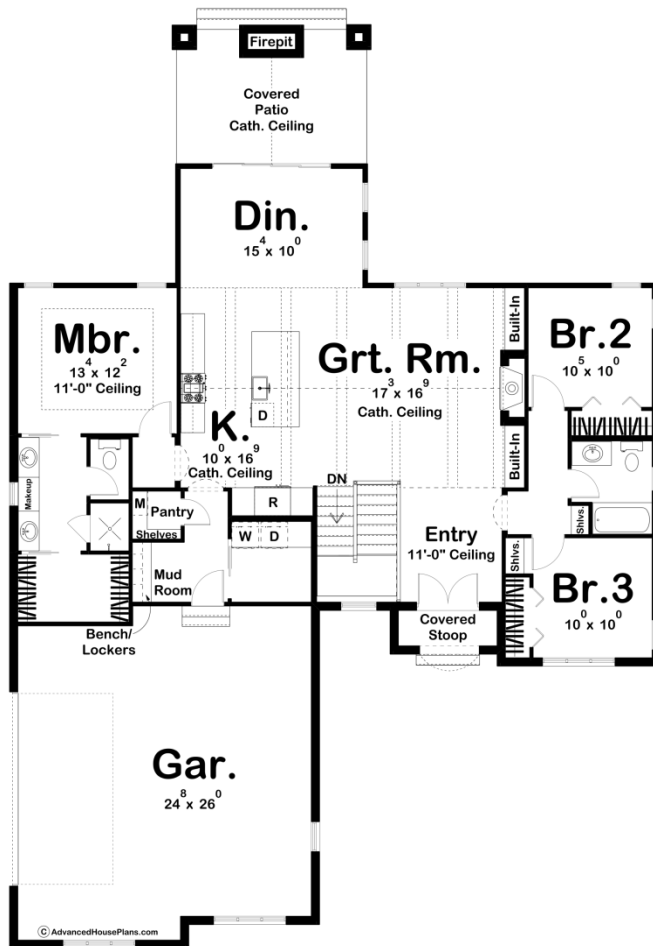
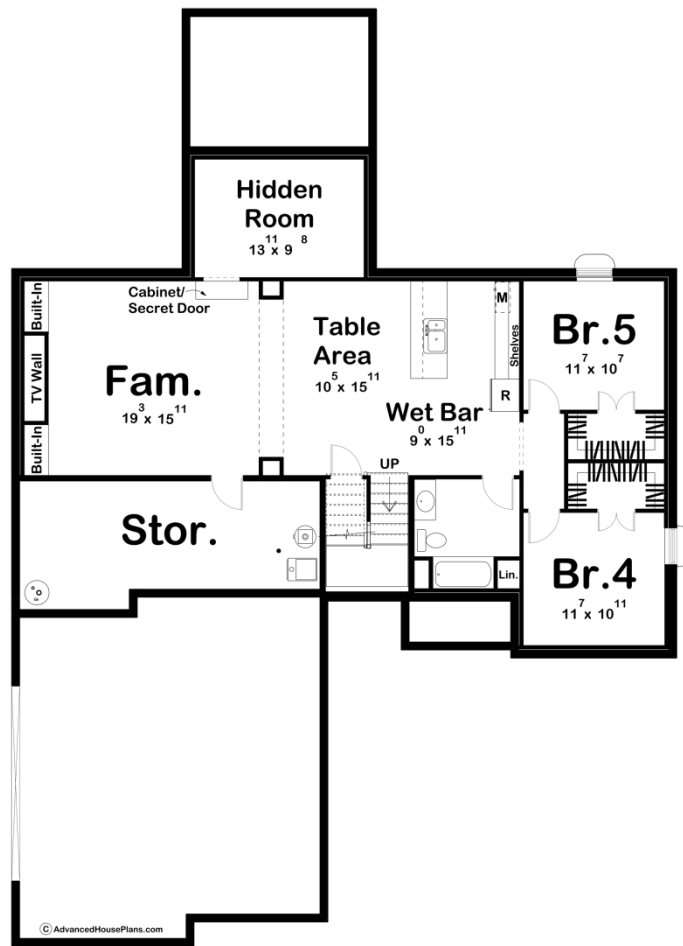




29968 - Flowersburn Data Sheet

1697 SQ FT	3 BEDS	2 BATHS	2 BAYS	54' 0" WIDE	77' 0" DEEP
---------------	-----------	------------	-----------	----------------	----------------





Construction Specs

Layout

Bedrooms	3
Bathrooms	2
Garage Bays	2

Square Footage

Main Level	1697 Sq. Ft.
Covered Area	213 Sq. Ft.
Garage	679 Sq. Ft.
Total Finished Area	1697 Sq. Ft.

Exterior Dimensions

Width	54' 0"
Depth	77' 0"

Default Construction Stats

Stats are unique to the individual plan.

Foundation Type	Basement
-----------------	----------

Exterior Wall Construction	2x4
Roof Pitches	10/12 Primary
Foundation Wall Height	9'
Main Wall Height	10'

Plan Description

The Flowersburn plan features a unique combination of styles. Influences of the craftsman style are combined with the timeless elements of the cottage style to give this plan amazing curb appeal. The exterior features white painted brick with wood accents including shutters, planter boxes, and accent trusses. As you step through the front covered stoop, you'll be blown away once you step inside. A formal entry lies under a soaring 11' tall ceiling. The home's great room is warmed by a fireplace that is flanked by built-in bookshelves and has an amazing cathedral ceiling with exposed wood beams. The great room flows into the kitchen in an open layout. The kitchen includes a large island with a snack bar and a walk-in pantry. A large dining room leads to a stunning covered outdoor area that features a fire pit and makes this home great for entertaining. On the left side of the home, the master suite features a trayed ceiling, dual vanities, a walk-in shower, and a walk-in closet. 2 bedrooms on the right side of the home share a centrally located hall bathroom. The home's 2 car side load garage accesses the home through a convenient mudroom with a bench and lockers.