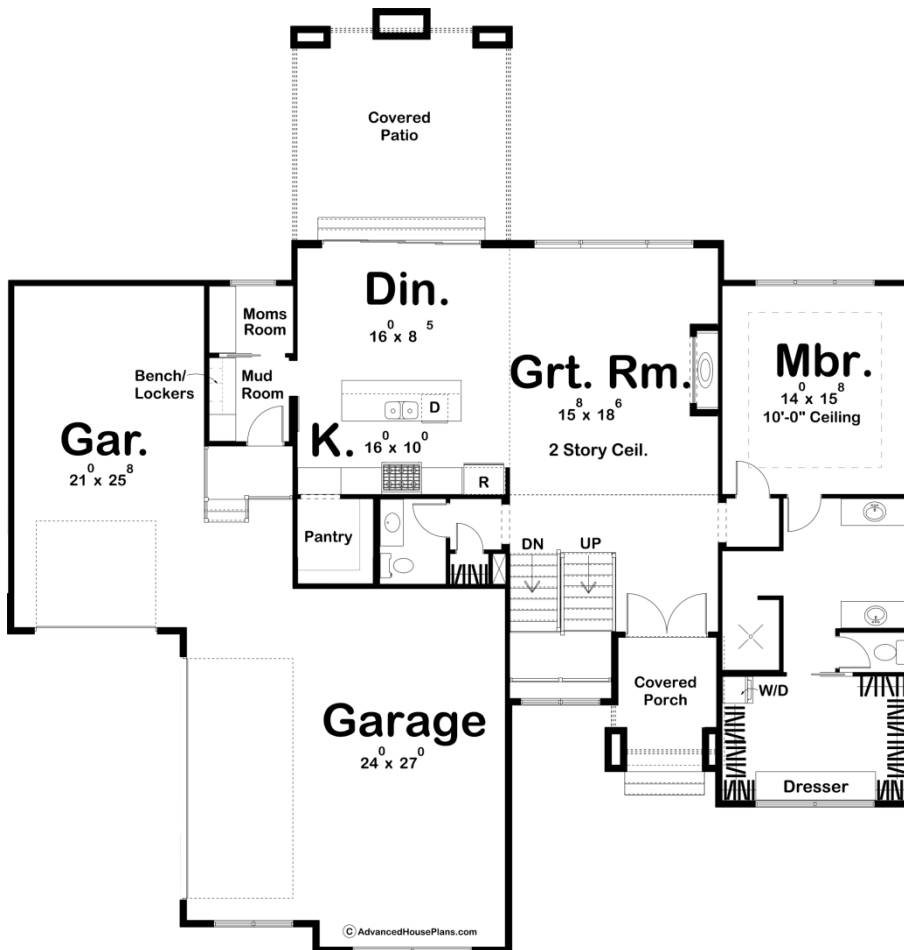
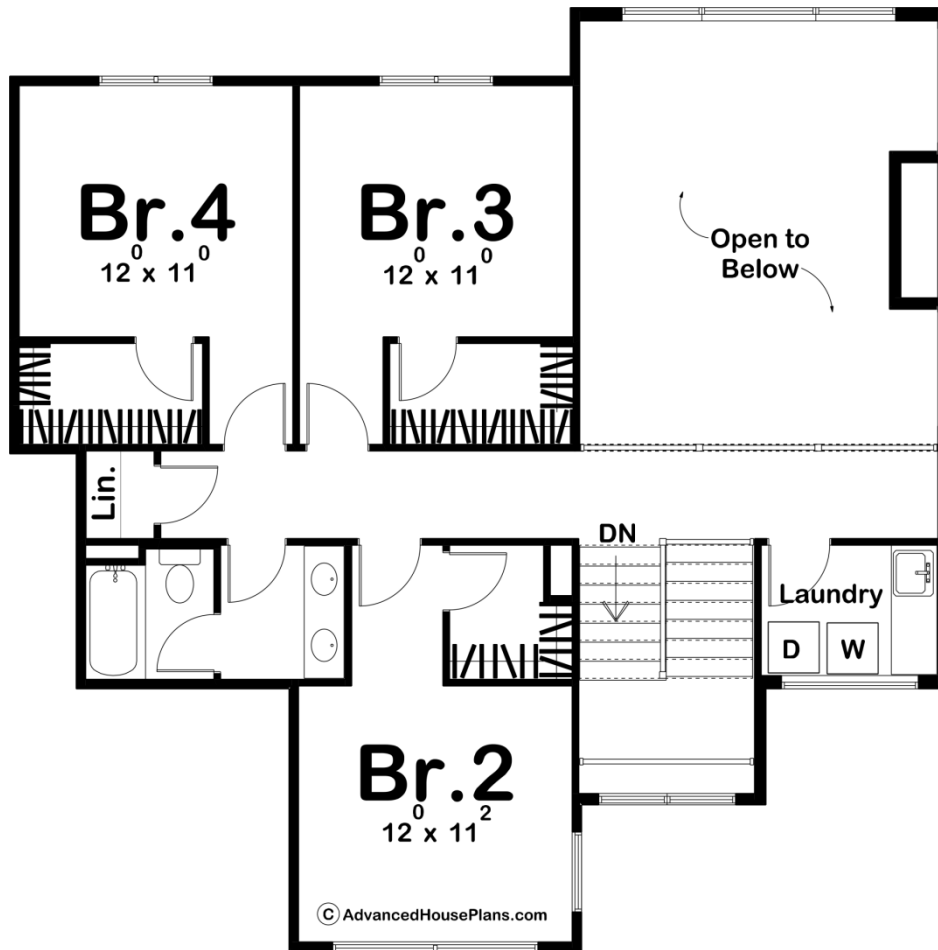




**29700 - Forest Glen Data Sheet**

2495 SQ FT	4 BEDS	3 BATHS	3 BAYS	68' 0" WIDE	71' 0" DEEP
---------------	-----------	------------	-----------	----------------	----------------





## Construction Specs

### Layout

Bedrooms	4
Bathrooms	3
Garage Bays	3

### Square Footage

Main Level	1594 Sq. Ft.
Second Level	901 Sq. Ft.
Garage	1102 Sq. Ft.
Total Finished Area	2495 Sq. Ft.

### Exterior Dimensions

Width	68' 0"
Depth	71' 0"

### Default Construction Stats

*Stats are unique to the individual plan.*

Foundation Type	Basement
-----------------	----------

Exterior Wall Construction	2x4
Roof Pitches	3/12 Primary, 5/12 Secondary
Foundation Wall Height	9'
Main Wall Height	9'
Second Wall Height	8'

## Plan Description

The amazing Forest Glen plan blends a beautiful modern style with classic prairie elements. The stunning exterior combines wood and stone with large modern windows to give this house tons of curb appeal. Just inside you will be amazed by the functional living space layout. The kitchen with a walk-in pantry flows perfectly into the great room that is warmed by a tall fireplace. The great room is sure to amaze with its 2 story ceiling. The master suite is perfectly situated with his/her vanities, a walk-in shower, and an enclosed toilet. The master closet has functional access to a built-in dresser. Just up the stairs, you will find 3 bedrooms that share a conveniently located hall bathroom. This house takes your entertaining game up a level with a great covered patio off of the rear of the house. As always any Advanced House Plans home plan can be customized to fit your needs with our alteration department. Whether you need to add another garage stall, change the front elevation, stretch the home larger or just make the home plan more affordable for your budget we can do that and more for you at Ahp.