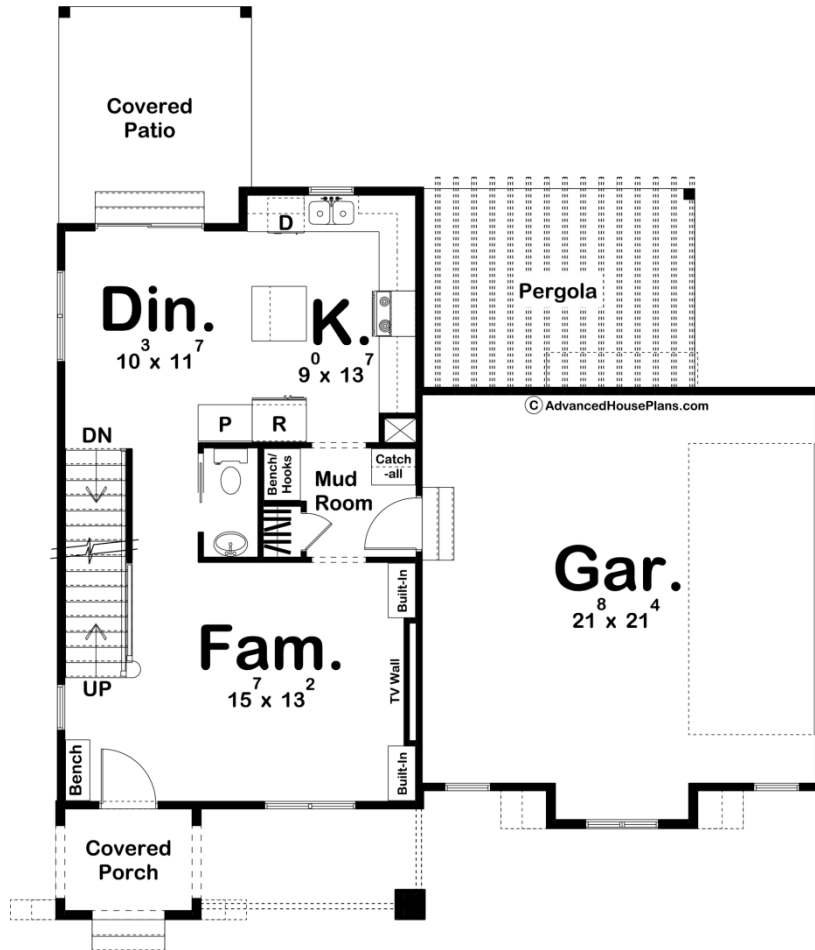
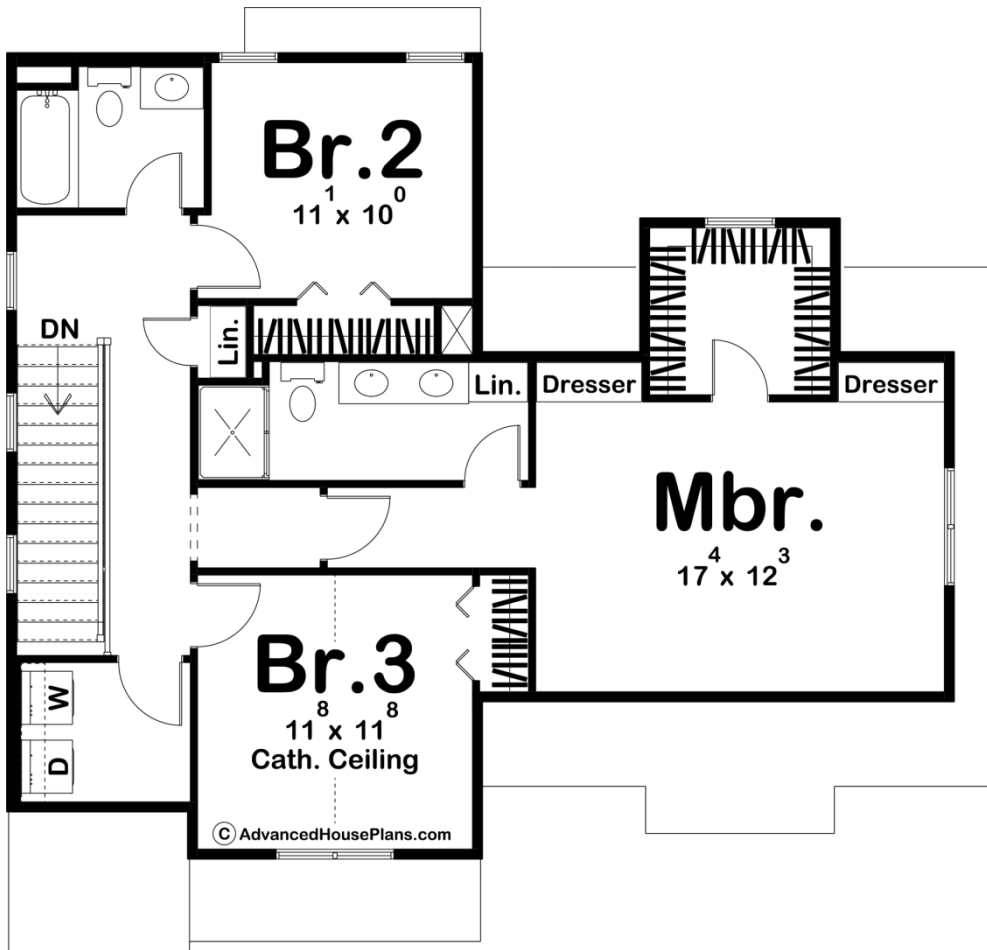




**29937 - Foxglove Data Sheet**

|               |           |            |           |                |                |
|---------------|-----------|------------|-----------|----------------|----------------|
| 1614<br>SQ FT | 3<br>BEDS | 3<br>BATHS | 2<br>BAYS | 42' 0"<br>WIDE | 50' 0"<br>DEEP |
|---------------|-----------|------------|-----------|----------------|----------------|





## Construction Specs

### Layout

|             |   |
|-------------|---|
| Bedrooms    | 3 |
| Bathrooms   | 3 |
| Garage Bays | 2 |

### Square Footage

|                     |              |
|---------------------|--------------|
| Main Level          | 659 Sq. Ft.  |
| Second Level        | 955 Sq. Ft.  |
| Garage              | 500 Sq. Ft.  |
| Total Finished Area | 1614 Sq. Ft. |

### Exterior Dimensions

|  |        |
|--|--------|
| Width                                  | 42' 0" |
| Depth                                  | 50' 0" |
| Ridge Height                           | 27' 0" |
| <i>Calculated from main floor line</i> |        |

## Default Construction Stats

*Stats are unique to the individual plan.*

|                            |                              |
|----------------------------|------------------------------|
| Foundation Type            | Basement                     |
| Exterior Wall Construction | 2x4                          |
| Roof Pitches               | 6/12 Primary, 4/12 Secondary |
| Foundation Wall Height     | 9'                           |
| Main Wall Height           | 9'                           |
| Second Wall Height         | 8'                           |

## Plan Description

The Foxglove plan is a beautiful modern cottage style house plan. The exterior features white stucco, light stone, and wood accents. Once you enter the house through the front covered porch, you'll find yourself in a large living room with built-in shelves and a tv wall. The kitchen includes an island and a reach-in pantry. Upstairs, you'll find 3 bedrooms including the master suite. The master bedroom includes a walk-in closet, dual built-in dressers, his/her vanities, and a walk-in shower. Back on the main floor, the home's 2 car side load garage accesses the home through a practical mudroom with a catch all.