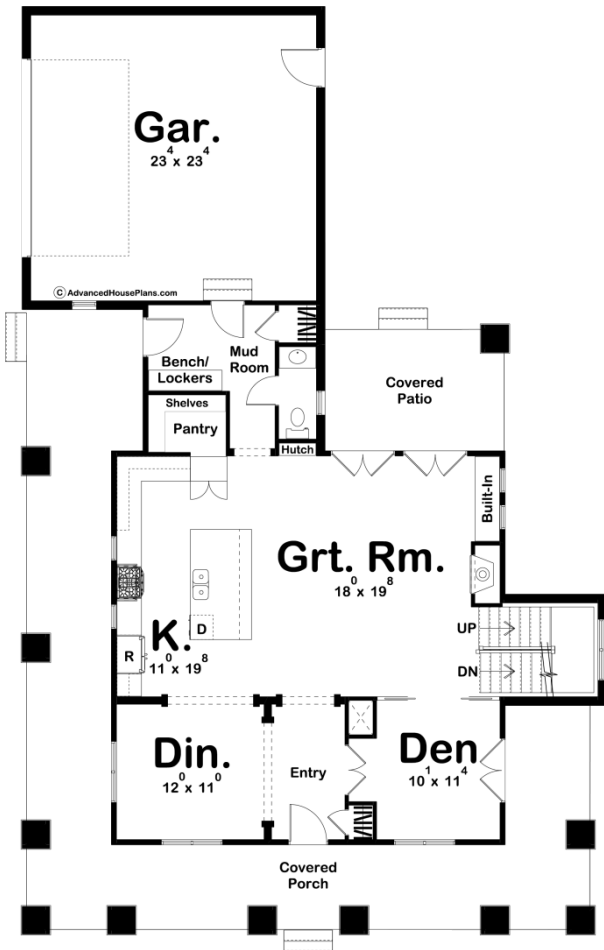
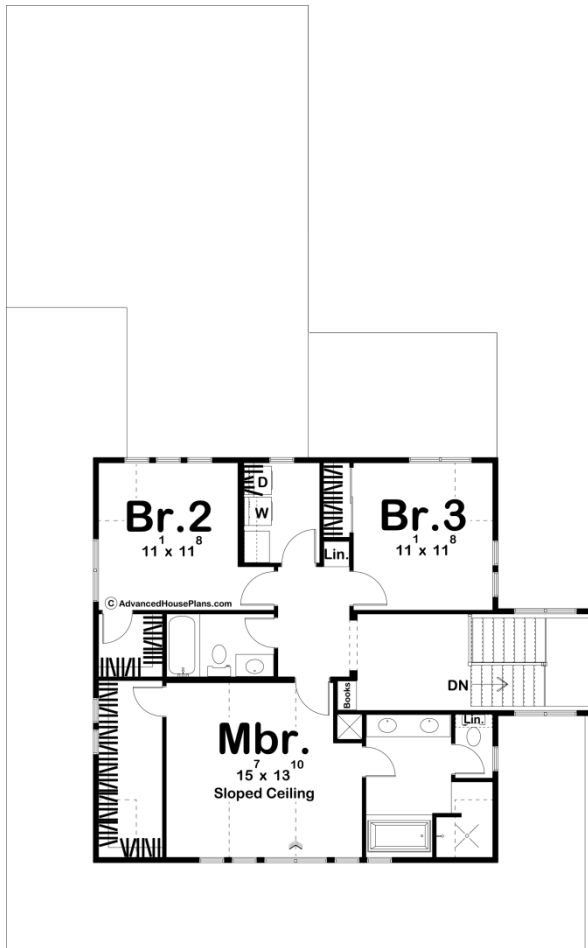




29939 - Georgetown Data Sheet

2268 SQ FT	3 BEDS	3 BATHS	2 BAYS	47' 0" WIDE	75' 0" DEEP
---------------	-----------	------------	-----------	----------------	----------------





## Construction Specs

### Layout

Bedrooms	3
Bathrooms	3
Garage Bays	2

### Square Footage

Main Level	1263 Sq. Ft.
Second Level	1005 Sq. Ft.
Covered Area	874 Sq. Ft.
Garage	568 Sq. Ft.
Total Finished Area	2268 Sq. Ft.

### Exterior Dimensions

Width	47' 0"
Depth	75' 0"
Ridge Height	31' 0"
<i>Calculated from main floor line</i>	

Default Construction Stats

Stats are unique to the individual plan.

Foundation Type	Basement
Exterior Wall Construction	2x4
Roof Pitches	10/12 Primary, 4/12 Secondary
Foundation Wall Height	9'
Main Wall Height	9'
Second Wall Height	8'

Plan Description

The Georgetown plan adds a modern twist to the timeless craftsman style. Stout columns and a large wrap-around porch invites you into the home. Just inside the front door, a formal dining room lies to the left of the entry. A den lies to the right that has access to the covered porch through French doors. The great room and kitchen are arranged in a beautiful open layout. The great room is warmed by a fireplace that is flanked by a built-in bookshelf. A pair of French doors lead to the covered patio from the great room. The kitchen includes a large island with a snack bar and a walk-in pantry. Upstairs, you'll find 3 bedrooms. The master suite features a cathedral ceiling and a walk-in closet. The master bathroom includes his/her vanities, a walk-in closet, and a soaking tub.