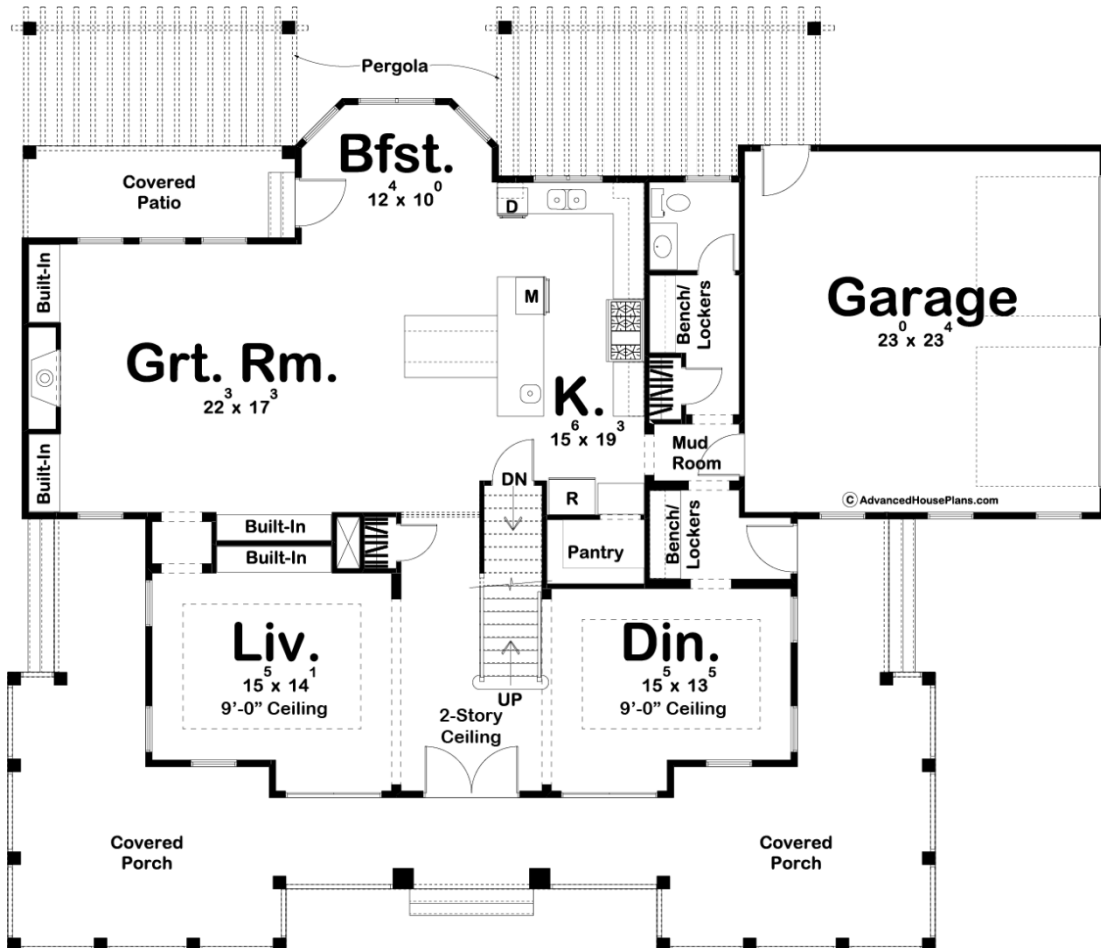
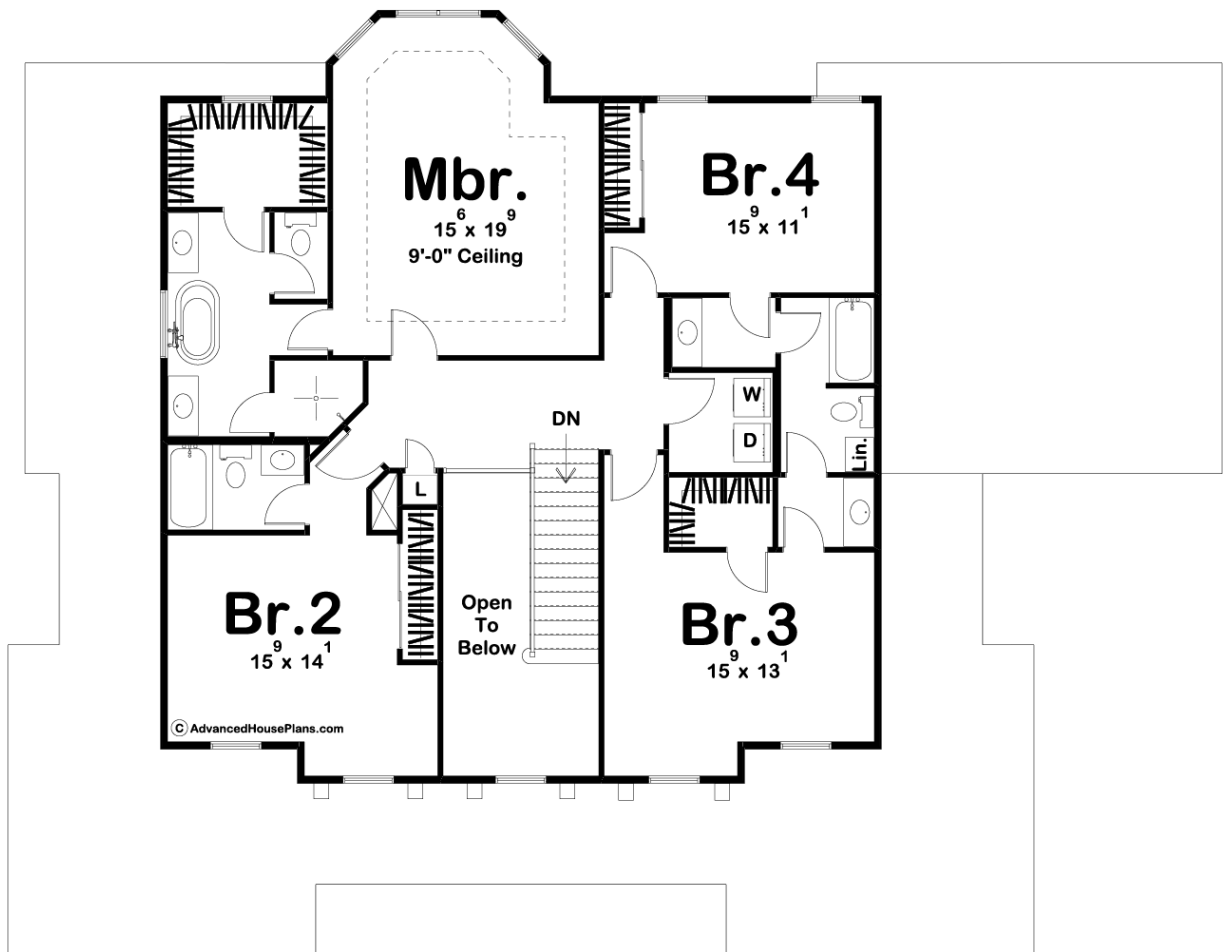




29778 - Greensboro Data Sheet

| | | | | | |
|---------------|-----------|------------|-----------|----------------|----------------|
| 3265 SQ FT | 4 BEDS | 4 BATHS | 2 BAYS | 71' 0" WIDE | 60' 0" DEEP |
|---------------|-----------|------------|-----------|----------------|----------------|





Construction Specs

Layout

| | |
|-------------|---|
| Bedrooms | 4 |
| Bathrooms | 4 |
| Garage Bays | 2 |

Square Footage

| | |
|---------------------|--------------|
| Main Level | 1732 Sq. Ft. |
| Second Level | 1533 Sq. Ft. |
| Garage | 559 Sq. Ft. |
| Total Finished Area | 3265 Sq. Ft. |

Exterior Dimensions

| | |
|--|--------|
| Width | 71' 0" |
| Depth | 60' 0" |
| Ridge Height | 28' 0" |
| <i>Calculated from main floor line</i> | |

Default Construction Stats

Stats are unique to the individual plan.

| | |
|----------------------------|------------------------------|
| Foundation Type | Basement |
| Exterior Wall Construction | 2x4 |
| Roof Pitches | 6/12 Primary, 4/12 Secondary |
| Foundation Wall Height | 9' |
| Main Wall Height | 9' |
| Second Wall Height | 8' |

Plan Description

The Greensboro plan is loaded with Southern charm! The exterior of the home has a sprawling wrap-around covered porch and blends siding, metal roofing and shutters into a perfect southern mixture. Once you step through the front door of the Greensboro, you are greeted by a 2 story entryway that is flanked on the left side by a living room and the right side by the dining room. Farther into the home the kitchen and great room flow seamlessly together. The kitchen includes a large eat-in kitchen island and a walk-in pantry. The great room is warmed by a fireplace that is flanked by built-in bookshelves. The breakfast area leads out to the covered patio. Two large pergolas off the rear of the home increase your outdoor entertainment options. On the second floor, the beautiful master suite includes his/her vanities, a soaking tub, a walk-in shower, and a walk-in closet. Bedroom 2 has access to its own bathroom while bedrooms 3 and 4 share a jack and jill bathroom. Back on the main floor, the 2 car, side-load garage accesses the home through a mudroom complete with bench and lockers.