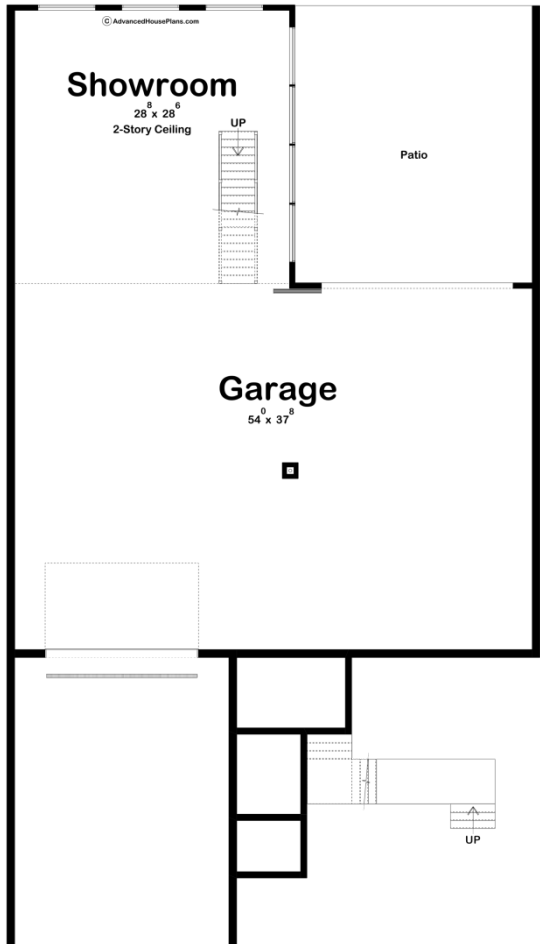
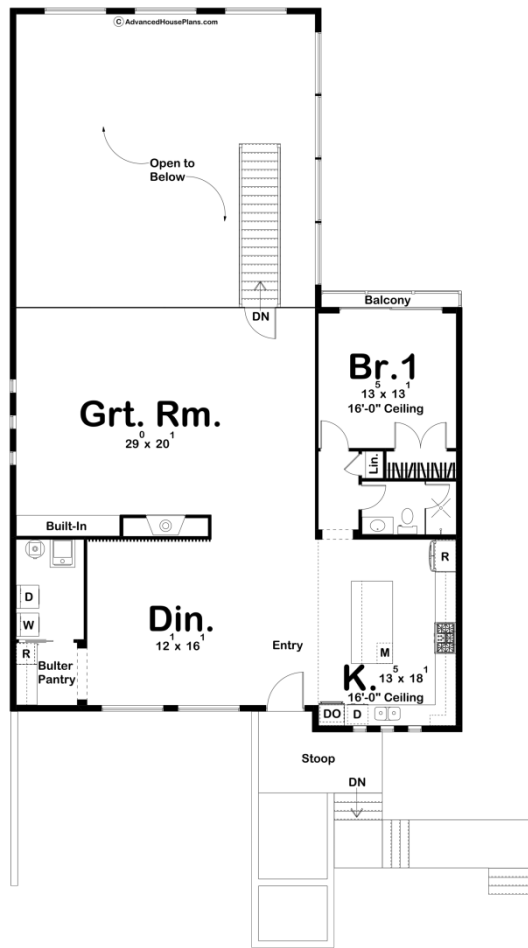




30233 - Greystone Data Sheet

1797 SQ FT	1 BEDS	1 BATHS	2 BAYS	55' 8" WIDE	98' 0" DEEP
---------------	-----------	------------	-----------	----------------	----------------





Construction Specs

Layout

Bedrooms	1
Bathrooms	1
Garage Bays	2

Square Footage

Main Level	1797 Sq. Ft.
Garage	2828 Sq. Ft.
Total Finished Area	1797 Sq. Ft.

Exterior Dimensions

Width	55' 8"
Depth	98' 0"
Ridge Height <i>Calculated from main floor line</i>	18' 2"

Default Construction Stats

Stats are unique to the individual plan.

Foundation Type	Walkout
Exterior Wall Construction	2x6
Roof Pitches	Flat
Foundation Wall Height	12'
Main Wall Height	12'

Plan Description

The sleek, modern design of this home is sure to impress, making it every car-lovers dream. This apartment garage includes 1797 square feet of living space on the main floor and 2828 square feet of garage space below. Entering on the main floor, you will be greeted by an open concept. The full kitchen on the right, and a large dining on the left. A butlers pantry and laundry room are also on this side of the home. Step in a bit further and you will find a hall bath along with a bedroom that has a large slider door and a balcony. Back in the main living space is a fireplace with built-ins on one side. The ultimate focus of this great room is the large glass wall that overlooks the showroom. Stairs connecting the great room to the garage below are closed off by a glass door. Below is 2828 square feet of garage space. The large walkout windows help bring in plenty of natural light to show off your most prized possessions.