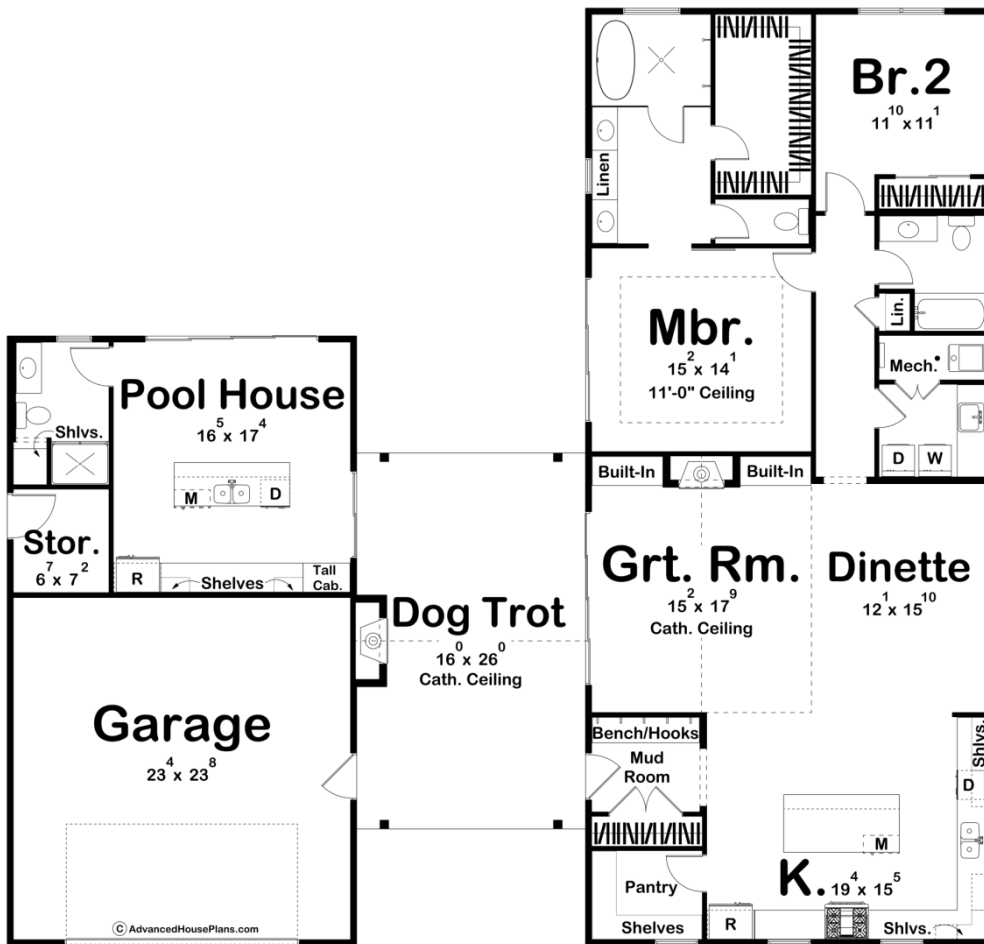




30216 - Hampton Cottage Data Sheet

1788 SQ FT	2 BEDS	3 BATHS	2 BAYS	68' 0" WIDE	64' 8" DEEP
---------------	-----------	------------	-----------	----------------	----------------



Construction Specs

Layout

Bedrooms

Bathrooms	3
Garage Bays	2
Square Footage	
Main Level	1788 Sq. Ft.
Covered Area	416 Sq. Ft.
Garage	576 Sq. Ft.
Total Finished Area	1788 Sq. Ft.
Exterior Dimensions	
Width	68' 0"
Depth	64' 8"
Ridge Height <i>Calculated from main floor line</i>	17' 10"
Default Construction Stats <i>Stats are unique to the individual plan.</i>	
Foundation Type	Slab
Exterior Wall Construction	2x4
Roof Pitches	Primary 6/12, Secondary 4/12
Main Wall Height	10'

Plan Description

This cottage style home combines a beautifully unique exterior with an impressively modern interior. The exterior of the Hampton Cottage is a mix of traditional lap siding with wood accents and garage doors. Walk up to the dogtrot to be welcomed by a beautiful covered greeting area with a fireplace and choose to walk into the pool house inclusion or main living space. The main living space offers a mudroom with built-in benches, a large kitchen with a breakfast bar and walk-in pantry, and a large great room, full of windows for natural light to peer in. Continue down the hallway to find the laundry room, master bedroom, complete with a large walk-in closet and double vanity bathroom, as well as the second bedroom with a personal bathroom. Head back out to the dogtrot to find the pool house, including another bathroom, small kitchen area, as well as a storage closet for any pool essentials.