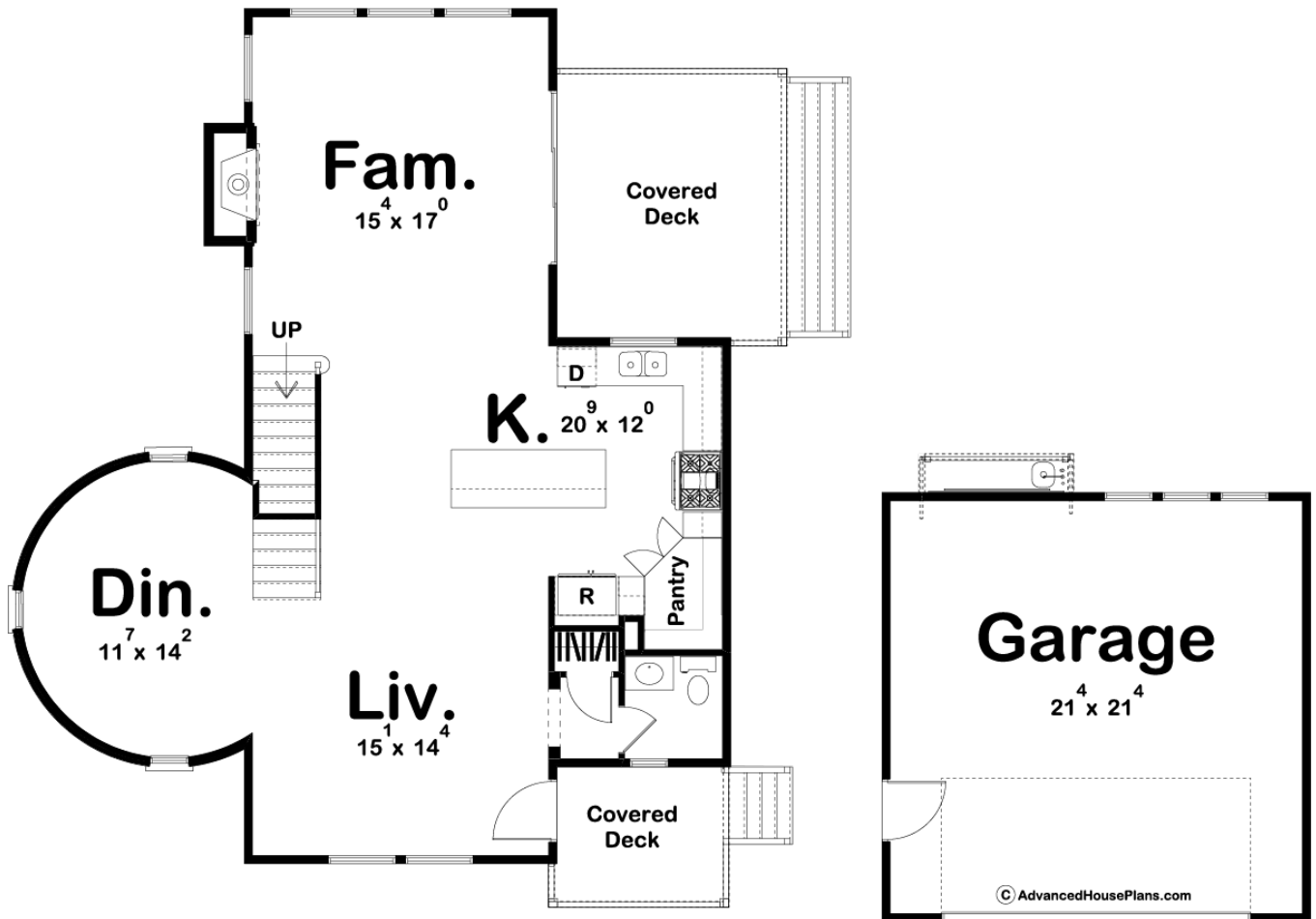
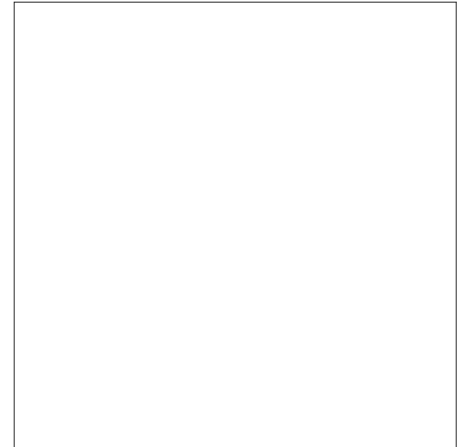
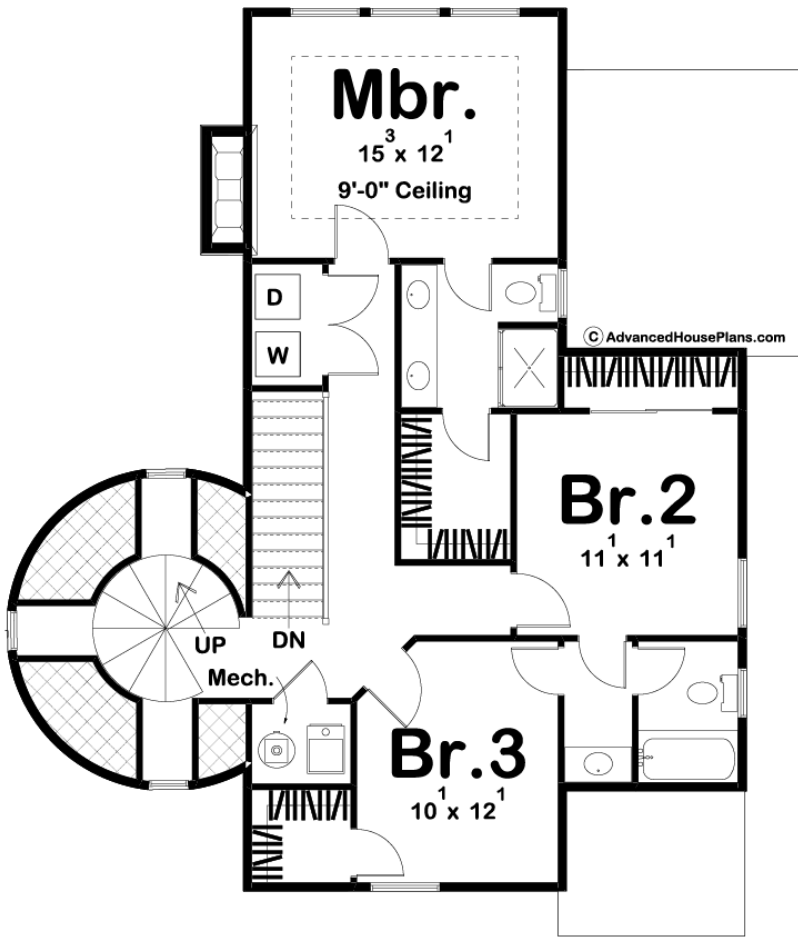




29765 - Harbor View Data Sheet

1924 SQ FT	3 BEDS	3 BATHS	2 BAYS	67' 0" WIDE	47' 0" DEEP
---------------	-----------	------------	-----------	----------------	----------------





Construction Specs

Layout

Bedrooms	3
Bathrooms	3
Garage Bays	2

Square Footage

Main Level	1063 Sq. Ft.
Second Level	861 Sq. Ft.
Garage	484 Sq. Ft.
Total Finished Area	1924 Sq. Ft.

Exterior Dimensions

Width	67' 0"
Depth	47' 0"

Default Construction Stats

Stats are unique to the individual plan.

Foundation Type	Slab
-----------------	------

Exterior Wall Construction	2x4
Roof Pitches	10/12 Primary, 4/12 6/12 Secondary
Main Wall Height	9'
Second Wall Height	8'

Plan Description

Make the most out of your vacation home by building the Harbor View plan. You'll feel like your touring a beautiful lighthouse while you are looking out to the ocean from the lookout tower. Once you step inside this amazing coastal home, you'll find a well thought out open floor plan on the main level that includes a dining room at the base of the lookout tower. The home's kitchen includes a large kitchen island and a walk-in pantry. The family room is warmed by a fireplace and has great ocean views through 3 large windows. On the second floor, you will find 3 bedrooms. The master suite includes his/her vanities and a walk-in closet. Bedrooms 2 and 3 share a jack and jill bathroom. Just a short walk up the spiral staircase and you'll be enjoying the amazing views in the lookout tower. Back on the main level, the home includes a 2 car detached garage that has a fish cleaning station on the rear.