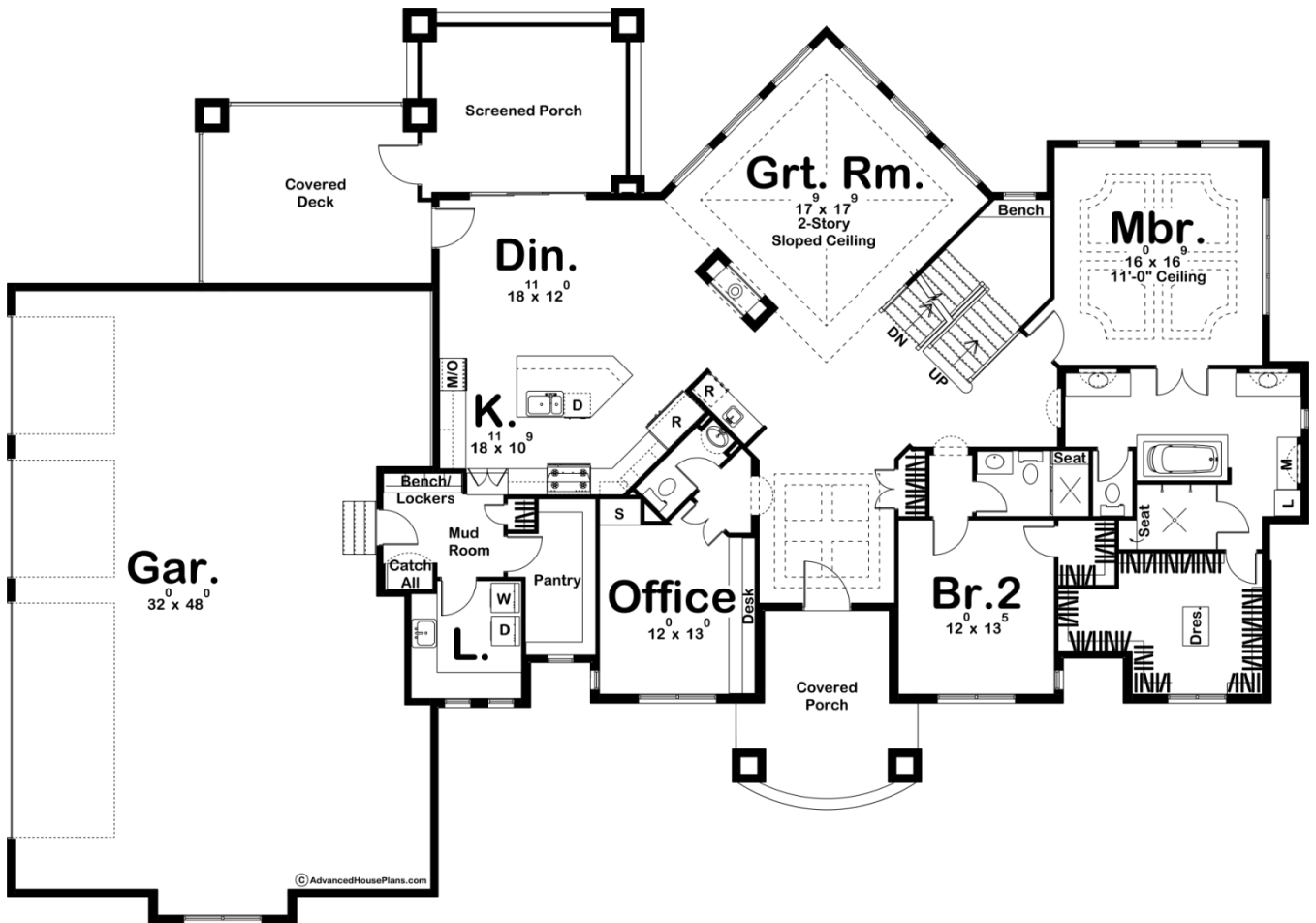
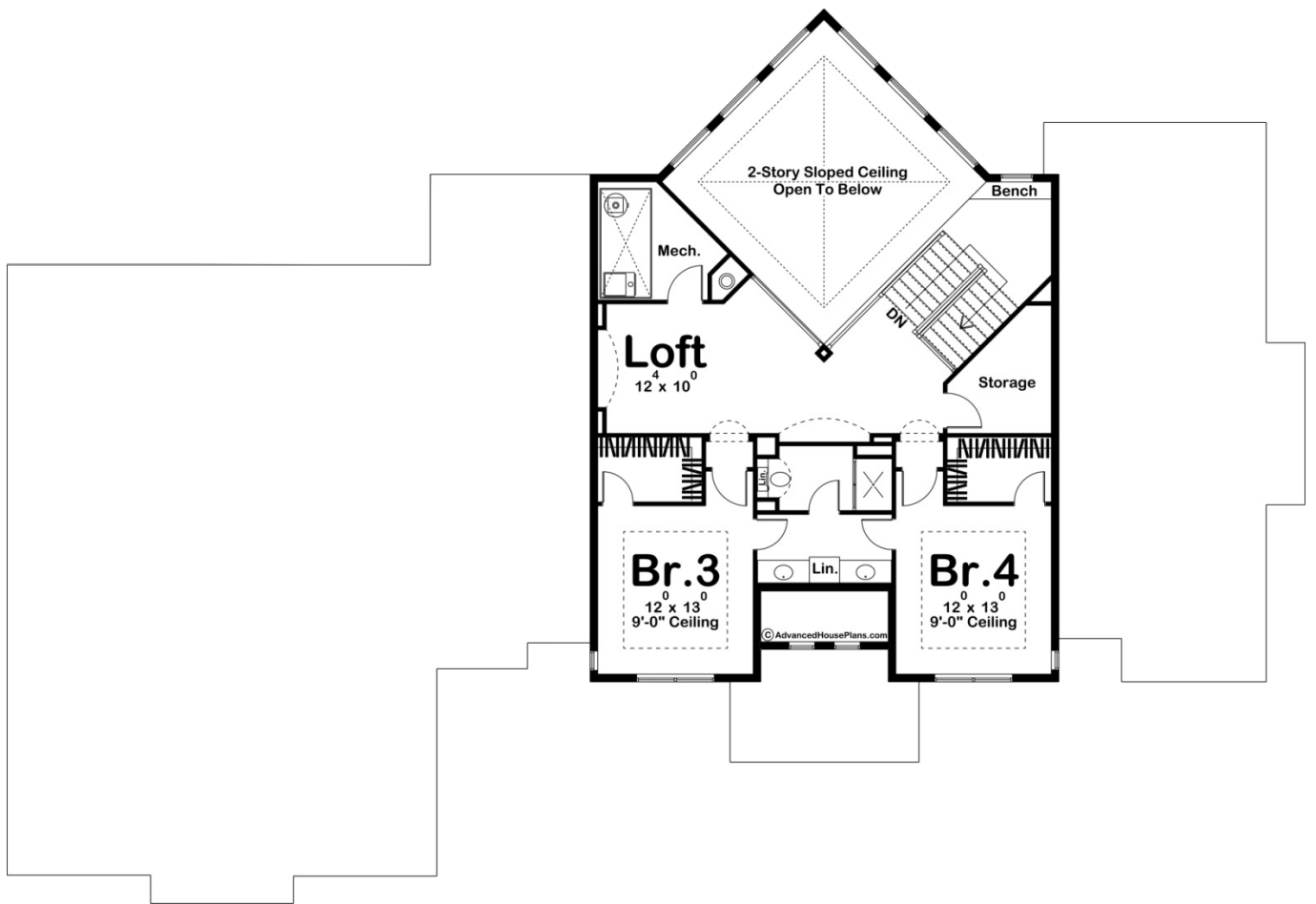




29512 - Harrington Data Sheet

3634 SQ FT	4 BEDS	4 BATHS	4 BAYS	100' 0" WIDE	68' 0" DEEP
---------------	-----------	------------	-----------	-----------------	----------------





Construction Specs

Layout

Bedrooms	4
Bathrooms	4
Garage Bays	4

Square Footage

Main Level	2759 Sq. Ft.
Second Level	875 Sq. Ft.
Garage	1526 Sq. Ft.
Total Finished Area	3634 Sq. Ft.

Exterior Dimensions

Width	100' 0"
Depth	68' 0"

Default Construction Stats

Stats are unique to the individual plan.

Foundation Type	Basement
-----------------	----------

Exterior Wall Construction	2x4
Foundation Wall Height	10'
Main Wall Height	10'
Second Wall Height	8'

Plan Description

The Harrington plan is a refreshing Modern Prairie 1.5 story house with clean lines and sharp details. Not without warmth and comfort, the plan features open living spaces with an impressive great room with a 2 story sloped ceiling and a double sided fireplace. The kitchen features a large island with a breakfast bar and a massive walk-in pantry with built-in shelves. The dining room leads to a screened porch and covered deck that is perfect for entertaining guests. The main floor also includes an office with a built-in desk. The master suite offers a large bathroom with his and her vanities and a walk-in shower and soaking tub. Just off the master bath is a massive walk-in closet with a built-in dresser. A large 4 car garage accesses the home through the mud room which has access to a large laundry room with its own sink. Upstairs you will find a large loft space that overlooks the great room. Bedrooms 2 and 3 share a bathroom and each has their own and walk-in closets.