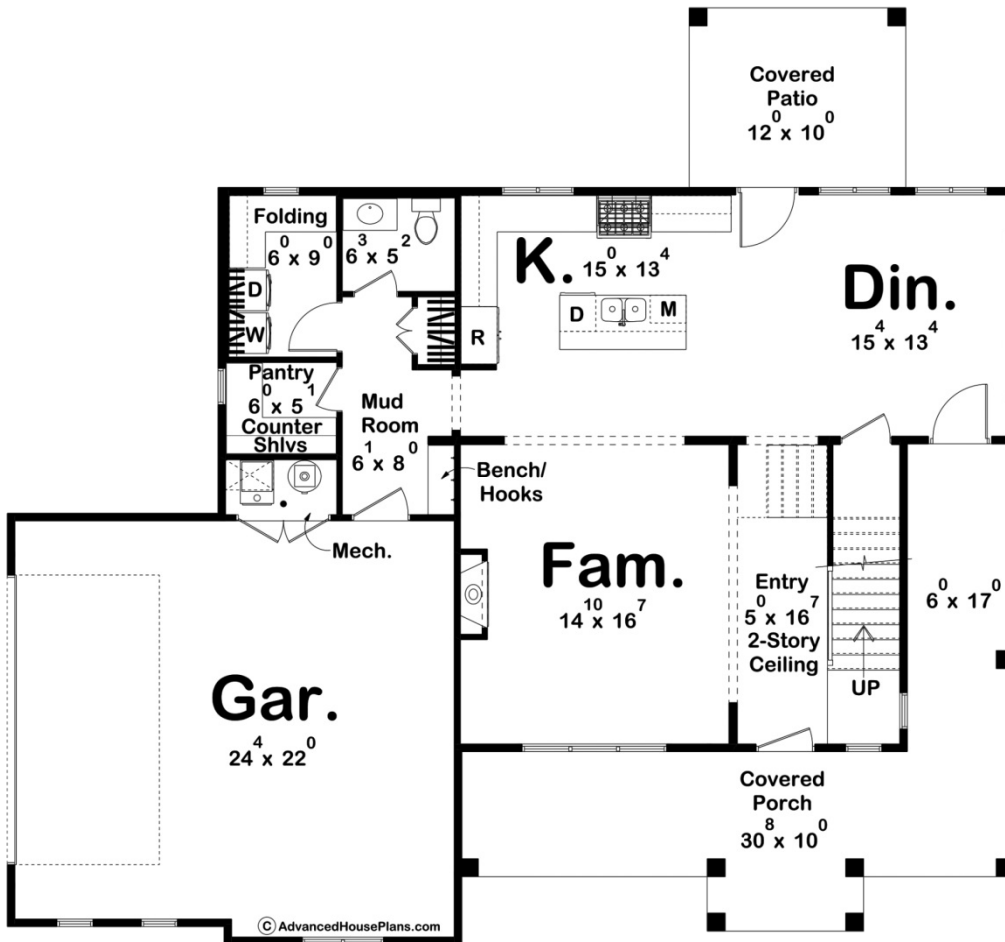
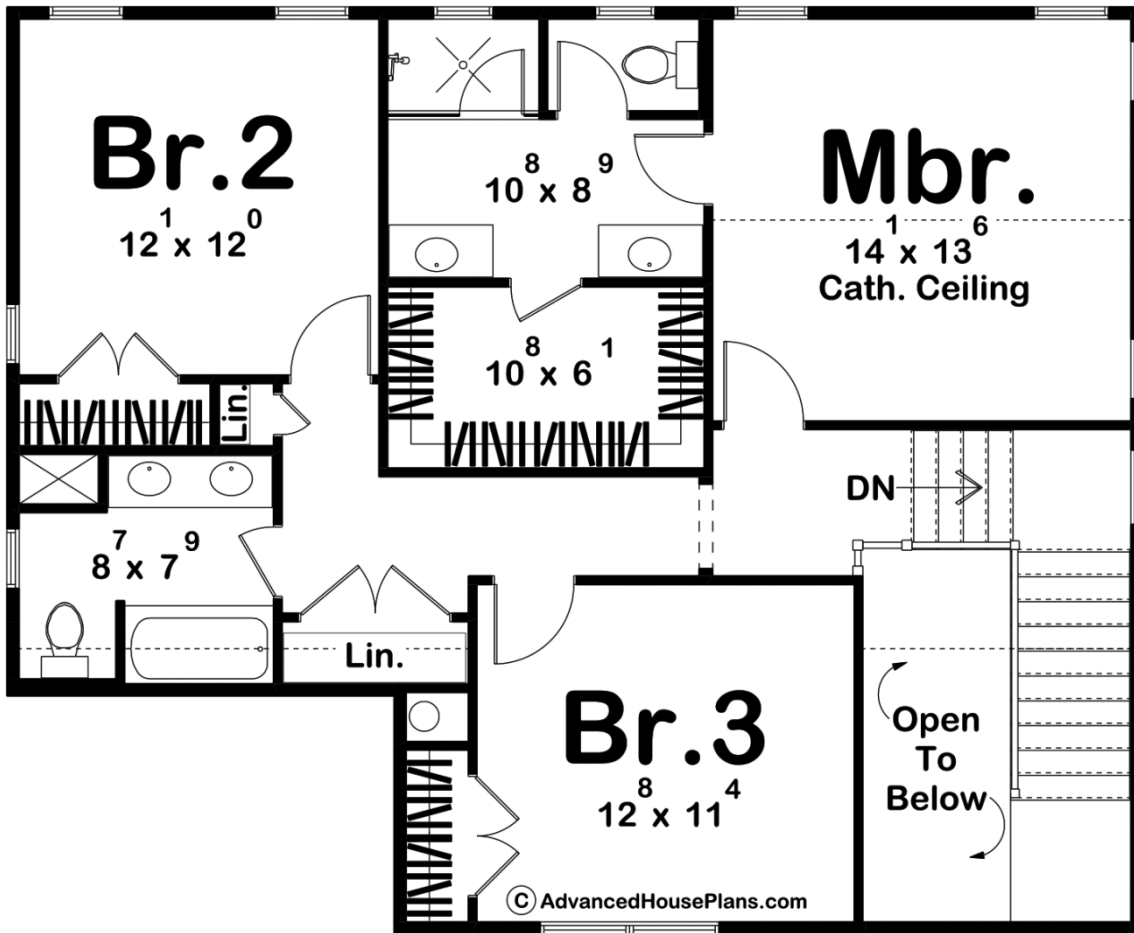




30410 - Hartford Data Sheet

2004 SQ FT	3 BEDS	3 BATHS	2 BAYS	55' 8" WIDE	51' 8" DEEP
---------------	-----------	------------	-----------	----------------	----------------





Construction Specs

Layout	
Bedrooms	3
Bathrooms	3
Garage Bays	2
Square Footage	
Main Level	1079 Sq. Ft.
Second Level	925 Sq. Ft.
Covered Area	463 Sq. Ft.
Garage	571 Sq. Ft.
Total Finished Area	2004 Sq. Ft.
Exterior Dimensions	
Width	55' 8"
Depth	51' 8"
Ridge Height	28' 4"
<i>Calculated from main floor line</i>	

Default Construction Stats

Stats are unique to the individual plan.

Foundation Type	Slab
Exterior Wall Construction	2x4
Roof Pitches	Primary 10/12, Secondary 12/12, 6/12, 4/12
Main Wall Height	9'
Second Wall Height	8'

Plan Description

Welcome to your dream farmhouse! Picture this charming 3-bedroom, 3-bathroom farmhouse-style house that captures the essence of comfort and sophistication. As you approach, you're greeted by a covered front porch, the perfect spot to enjoy a cup of coffee while taking in the scenic surroundings. Upon entering through the 2-story entry, you'll immediately feel the warmth and character of this home. The family room is a cozy retreat with a beautiful fireplace, creating a focal point for gatherings. The open floor plan seamlessly connects the family room to the kitchen and dining room, fostering a sense of togetherness. The kitchen is not just a culinary space but a hub for family activities, featuring modern amenities, ample counter space, and a layout that promotes easy flow. With three bedrooms, this farmhouse provides privacy and comfort for the whole family. Each bedroom is thoughtfully designed to be a personal haven, offering a tranquil escape from the daily hustle and bustle. Imagine spending evenings on the covered porch, enjoying the fresh air and peaceful surroundings. Whether you're entertaining guests in the spacious family room or preparing meals in the well-appointed kitchen, this farmhouse is designed for a life well-lived.